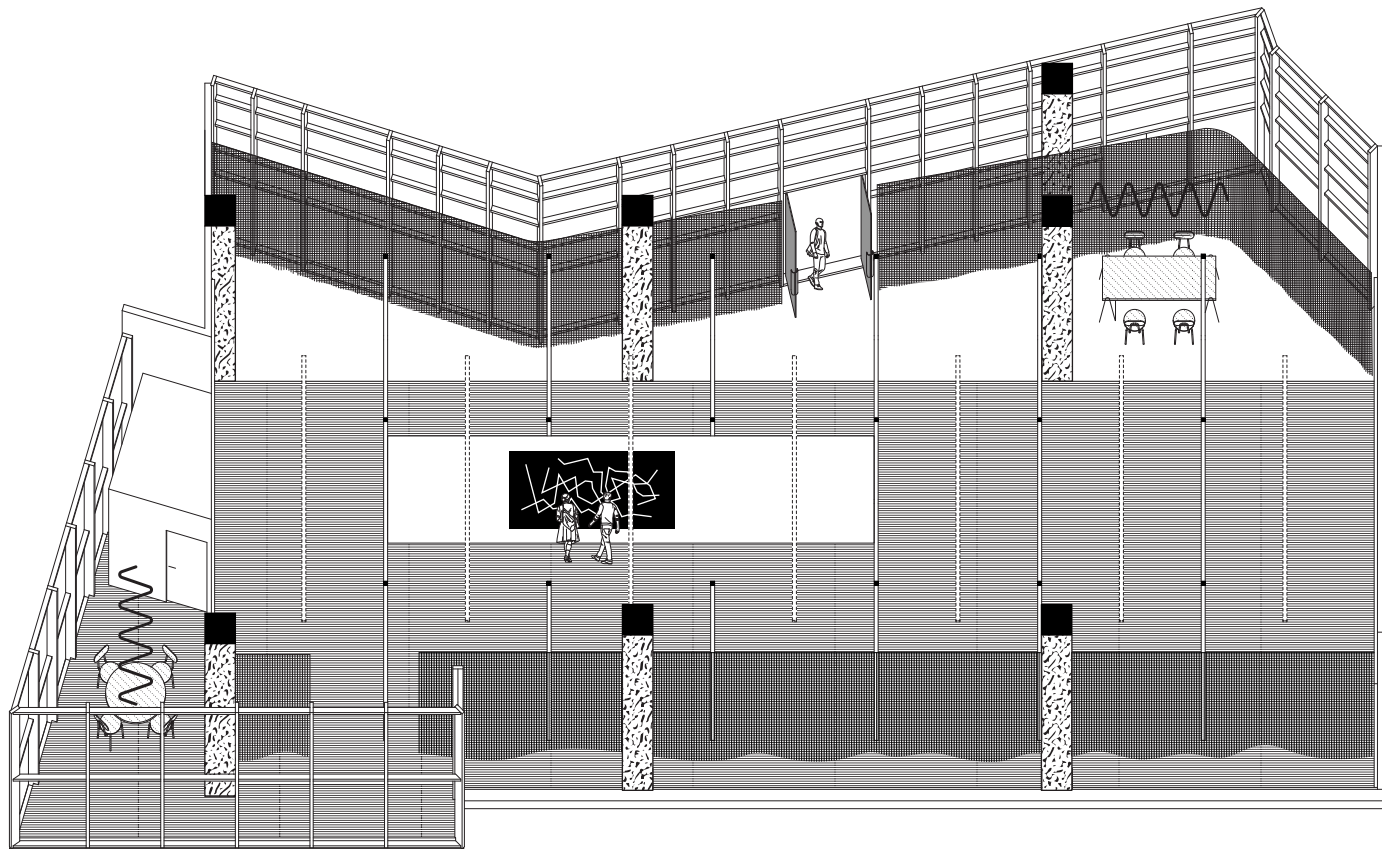


"MALINGUE GALLERY SHANGHAI" USER GUIDE

BEAU ARCHITECTS

GALLERY AS A DEVICE



The Edouard Malingue Gallery in Shanghai is the second collaboration between the Gallery Owners and BEAU Architects. As such, it generates a simple question: What are our common ambitions in re-thinking the “model” of an art-gallery, in Shanghai, in 2016? Located in a “post-mall” building of the West-Bund District, the selected space is originally made to host shops and restaurants and lies in an ambiguous condition, almost finished but already obsolete.

Since the very start, we agreed on not doing a white cube or a ready-made/post-industrial project, as none of it would have been an honest gesture within this context. As the ambitions unfolded, the project started to experiment with the idea of scaling-down the space by progressively merging with its context, not neutralizing neither romanticizing it, but carefully identifying its potential and enhancing it by a few, ultimately necessary, adjustments.

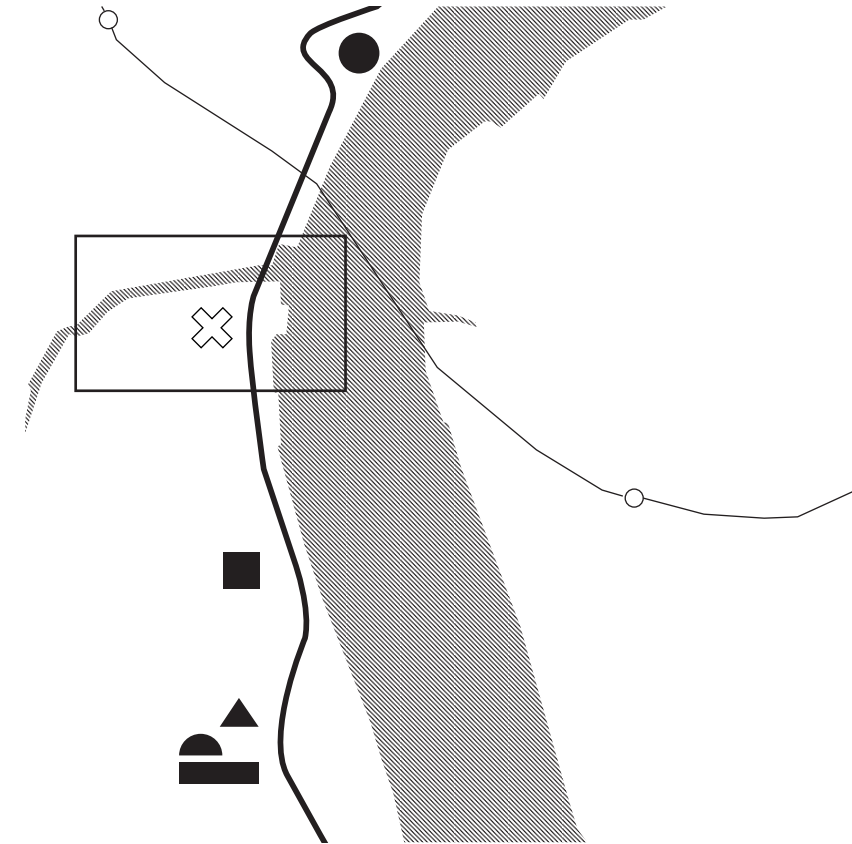
The first one, a visibly thick floor, demarcates the exhibition area. In reaction, it also generates an untouched “buffer” zone at the entrance and clarifies the relation between the existing (perfectly regular) structure and its (oddly tilted) envelope.

The second one introduces the idea of flexibility achieved through rigidity. A series of posts, in tension between the floor and the ceiling, are distributed according to a regular grid. These posts (a reminiscence of the structure used in the Hong Kong gallery) define an order and install a secondary scale in the space, creating axis, sub-spaces and perambulation phenomenon. Pragmatically speaking, they become the support of potential walls, rooms, filters, etc., forever adjusted yet consistent in time.

This balance between “what is given” and “what is added” (and how/by who) is the key strategy

behind the gallery identity and future evolution, percolating through all subsequent architectural gestures: Curtains, controlling light and intimacy, echo the materiality and height of the partitions; A straightforward lighting pattern, installing itself within the grid axis, underlines the obsessive iteration/multiplication of objects within the space. This obsession is also found in the loose chairs installed in the gallery (a brilliant proposal from the Gallery Owners: Why not take time, in a comfortable way, to look at art?), bringing the final touch to the progressive fragmentation and invasion of the original volume. Finally, the additional materials are refined versions of the pre-existing ones: concrete becomes darker and polished, dull metal turns into stainless steel, the original grey color palette is refined.

All these actions converge towards a project of controlled humility and neutrality, ultimately defining the gallery as a device dedicated to art experiences. Spatially, materially and functionally, the gallery exists in a perpetually questioned state, waiting to be taken over.



CAPTION

-  longteng avenue
-  subway
-  Huangpu river
-  Edouard Malingue gallery

OTHER ART SPACES

-  Long Museum
-  YUZ Museum
-  Aike Dellarco Gallery
-  Shanghart Gallery
-  West Bund Artisitc Center

01.LOCATION

The gallery is located in the West Bund area, close from other art spaces as the Long Museum, the Yuz Museum, the West Bund Artistic Center, Shanghart Gallery and Aike Dellarco Gallery.

Address:
2/F, room 2202
No 2879 Longteng Avenue
Xuhui District, Shanghai, China





02.ACCESS

The gallery is accessible through the following:

P.

Car-park on B1 and B2 levels: Entrance on the southside of SPDB Financial Leasing (浦银租赁). Only motorcycles and cars with maximum 5 to 7 seats are allowed.

L.

Lift from main entrance and patio on G/F.

Entrance (mm) = 2.100 (W) x 1.100 (H)

Car (mm) = 2.200 (W) x 1.500 (H) x 2.050 (D)

S.

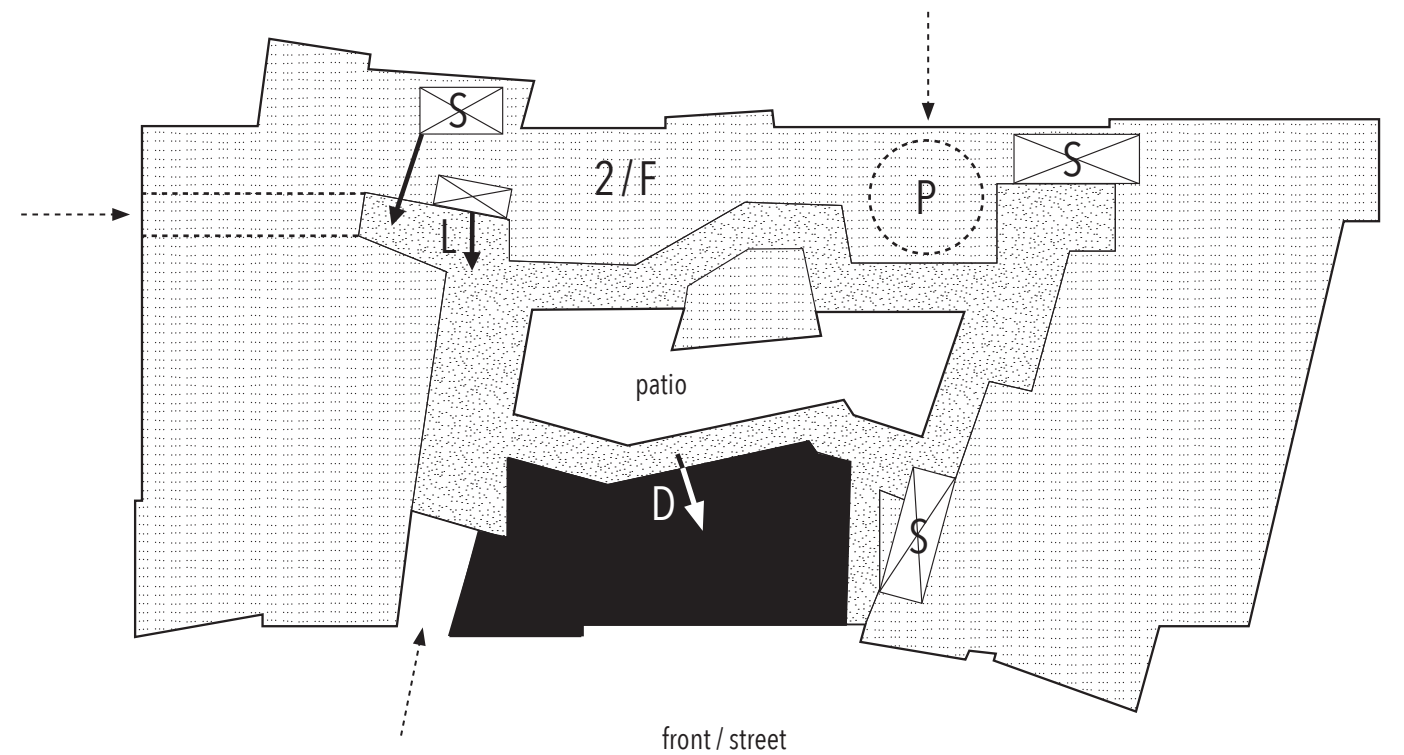
Staircase from main entrance and patio on G/F.

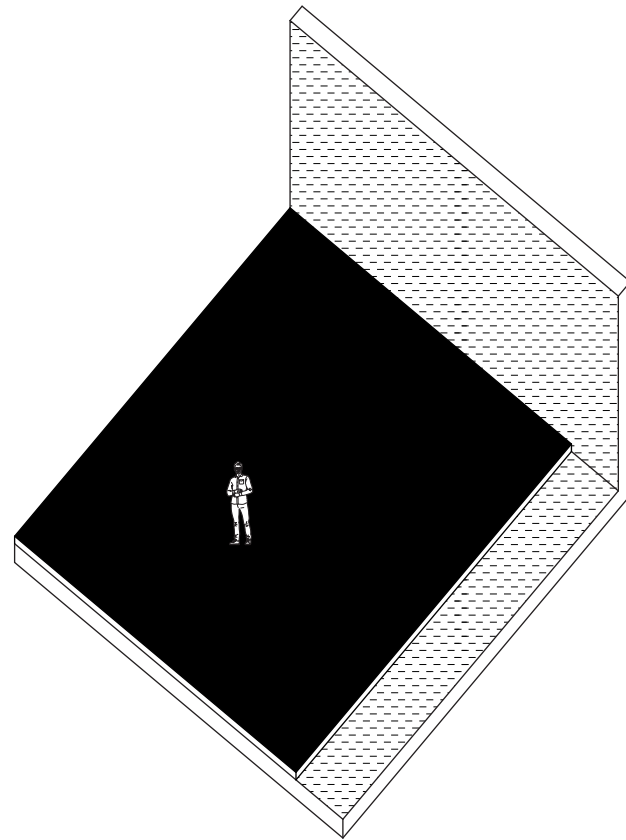
Flight (mm) = 1.400 (W) x 2.100 (H)

D.

From patio on 2/F.

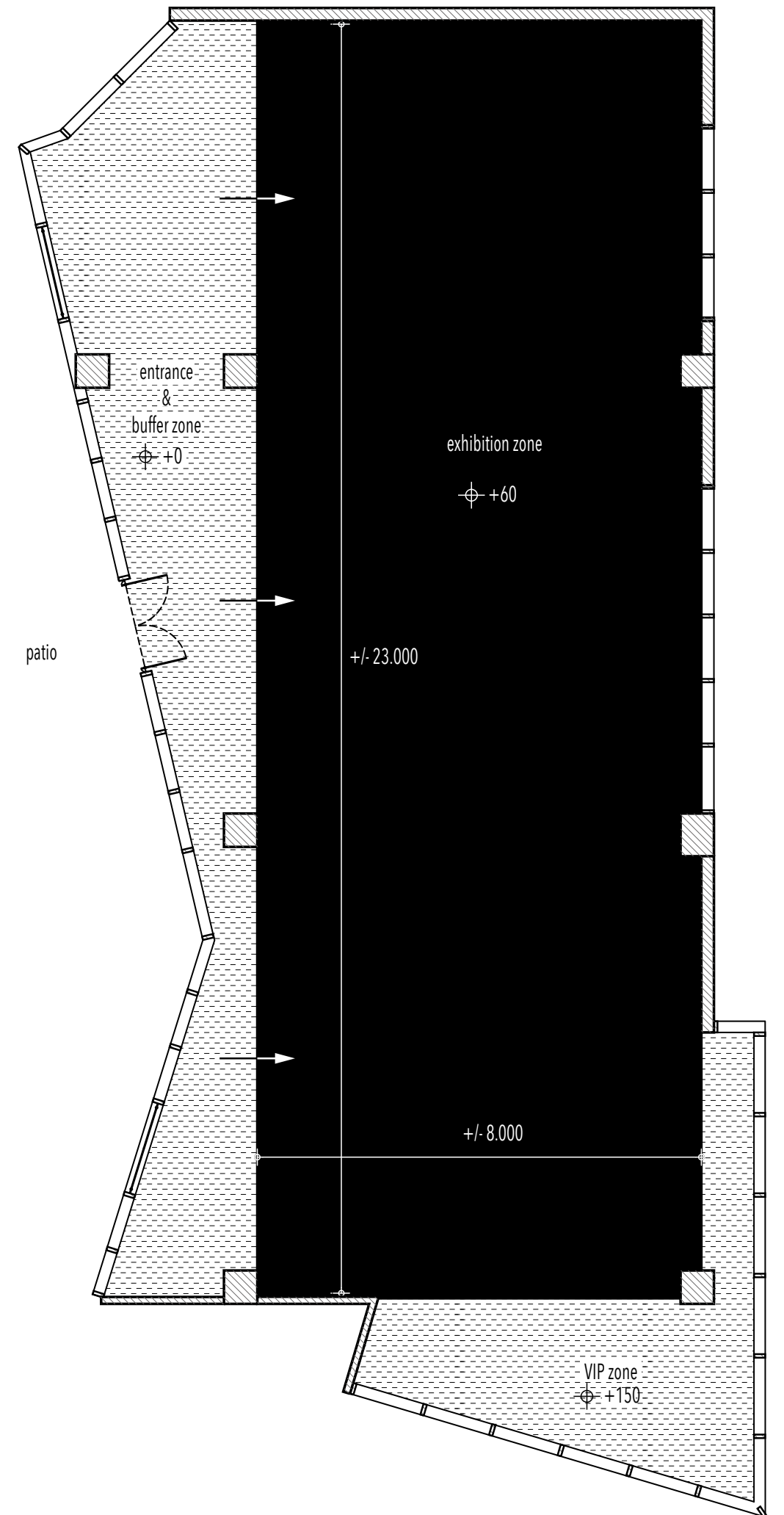
Gallery door (mm) = 1.700 (W) x 2.700 (H)

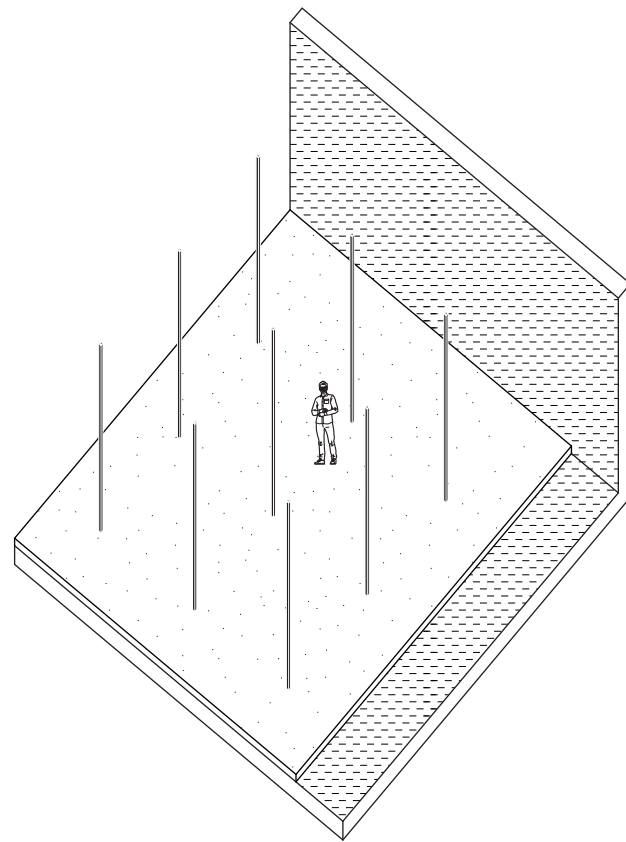




03.ZONES

The gallery is 265 SqM of which 188 SqM of exhibition area. This zone is materialised through a 60mm thick new floor delimitating a regular rectangle of more or less 23 by 8 meters. The material is raw cement screed, not sealed hence porous. The remaining existing floor is dedicated to the entrance and buffer zone, also accommodating the main office space. Discreetly located next to the street facade, a VIP zone is offering privacy and visual connection towards the city.





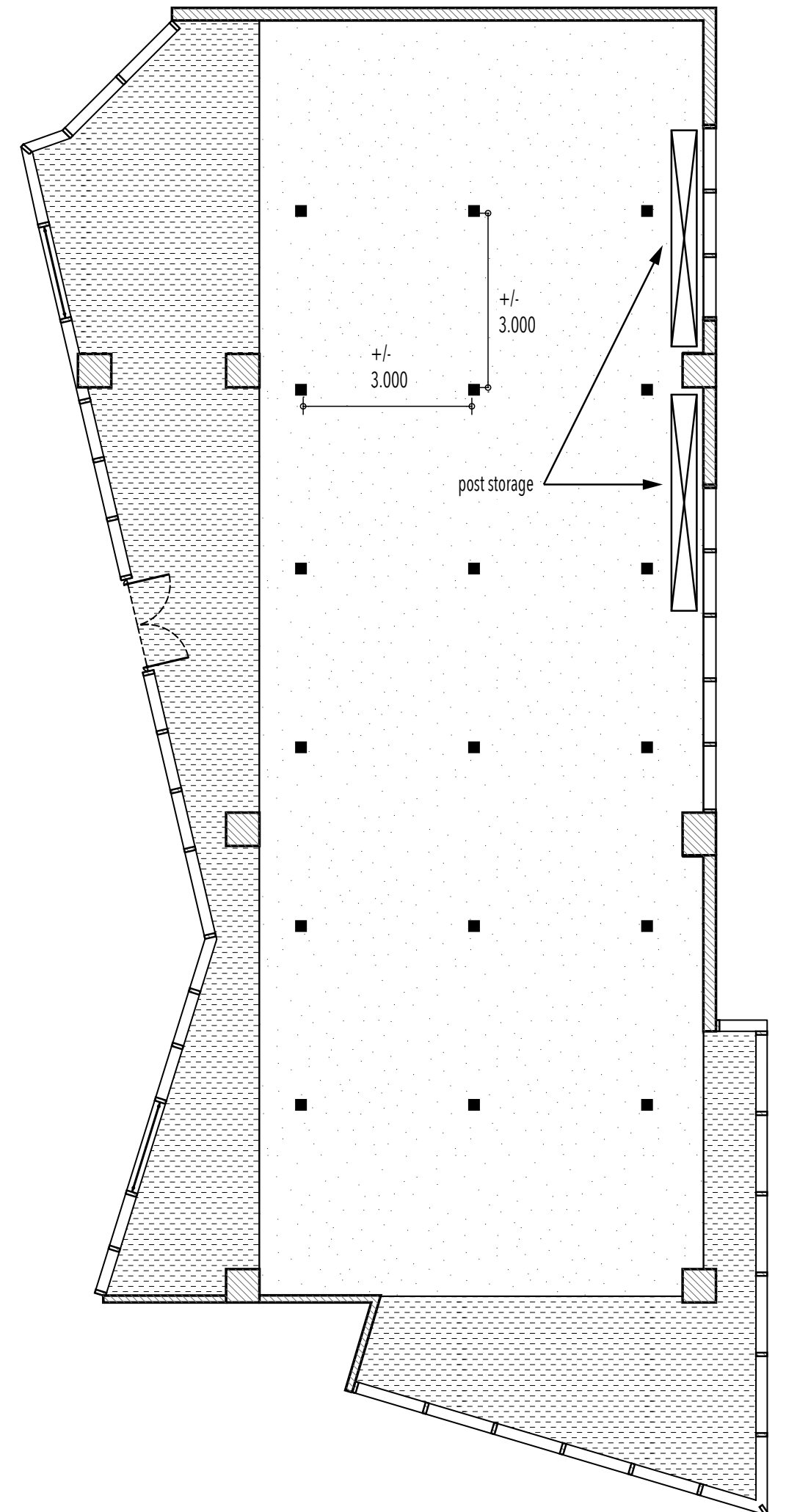
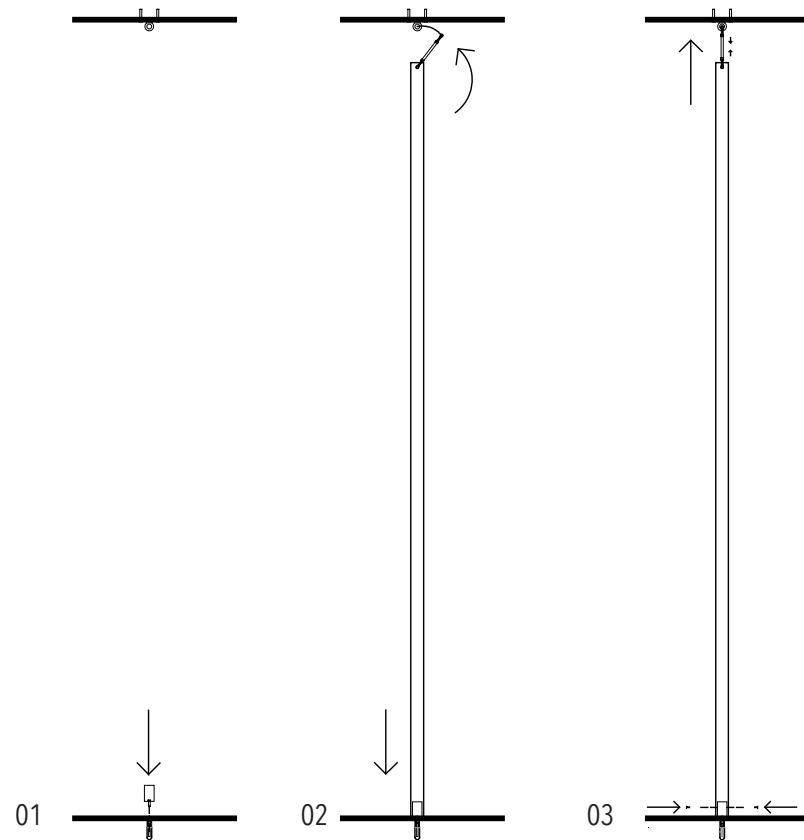
04.POSTS

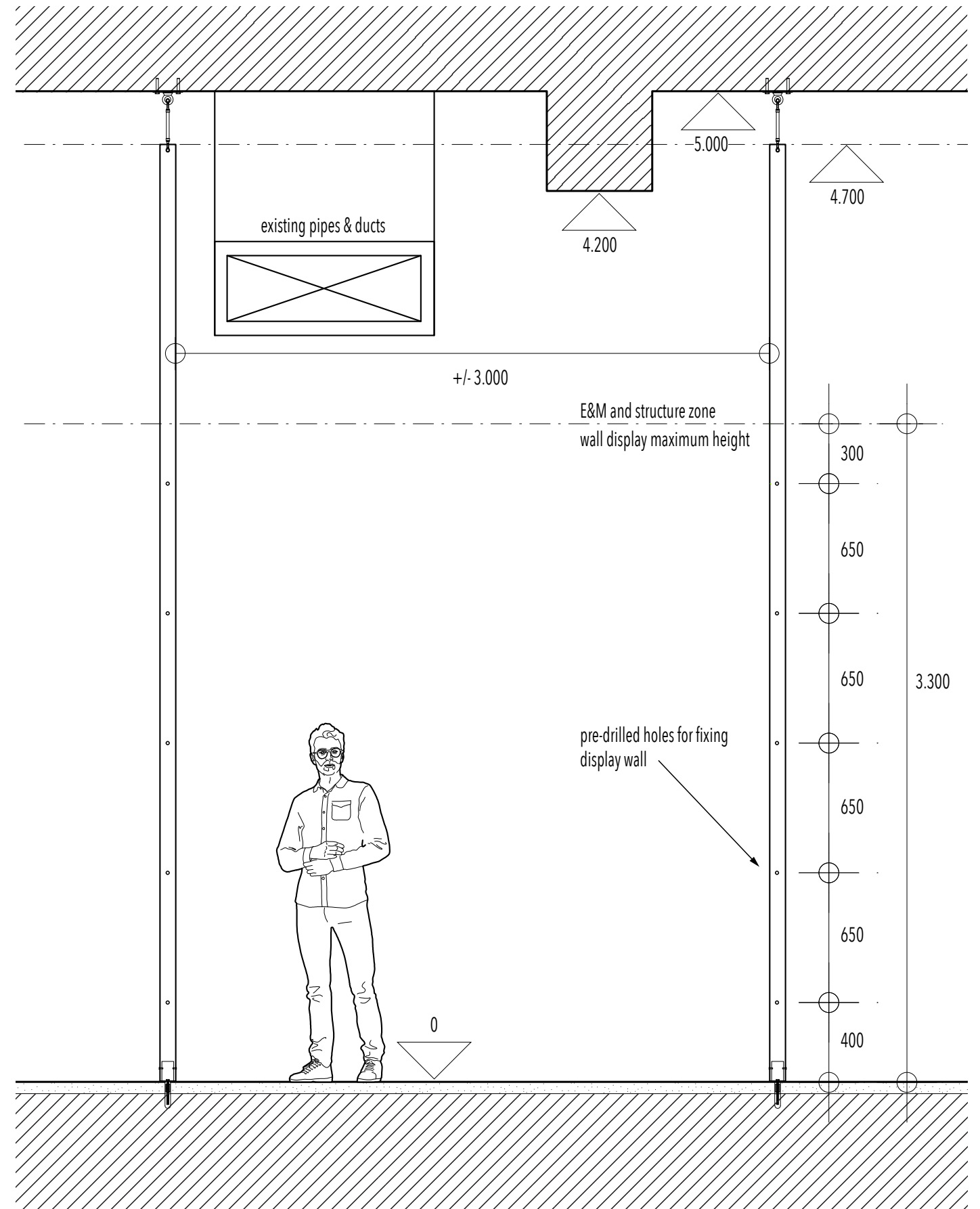
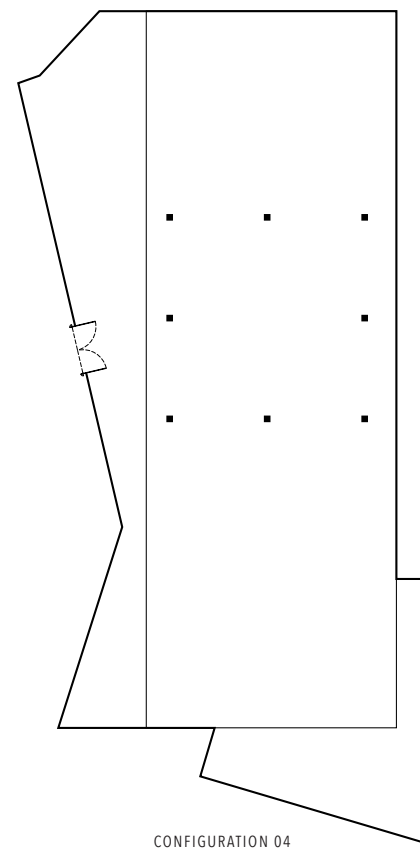
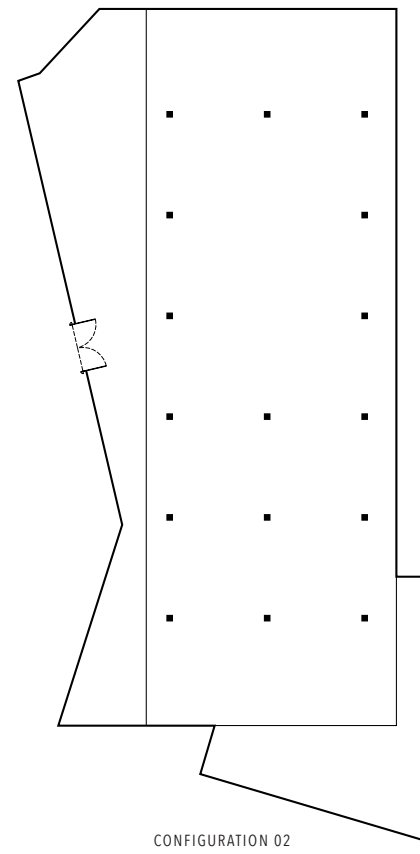
The main device of the exhibition zone consist in 18 "floor to ceiling" posts positioned on a regular grid of 3 x 3 meters. They constitute the organizing and structural system on which all layout can be developed and built.

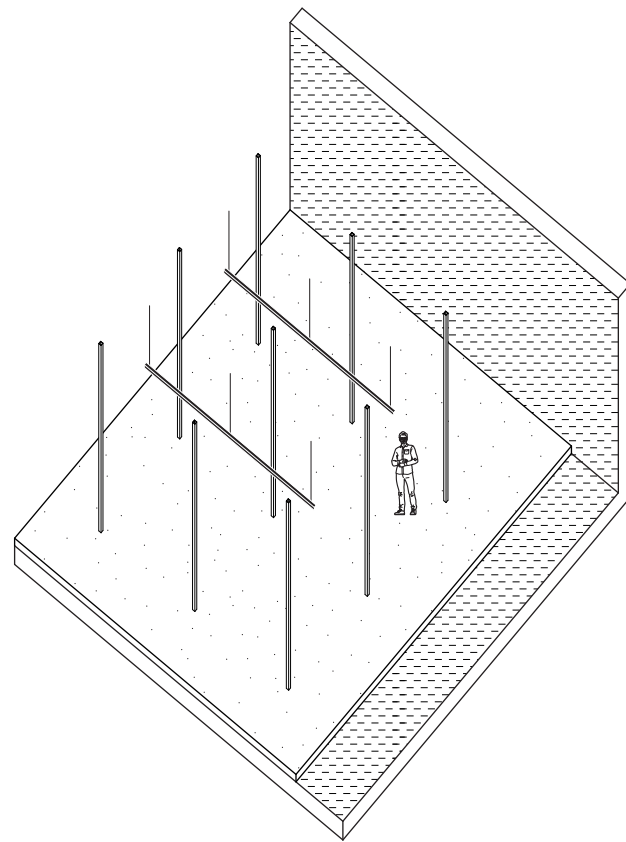
The post are designed to support secondary structure and partitions (see also chapter 6) up to 100kg each (incl. eventual artwork).

The posts are made out of stainless steel square tubes and measure 80x80x4.700mm. They are pre-drilled so as to be easily connected to standard dry-wall profiles (see page 13).

They are dismantable/remountable according to the principle illustrated opposite (connection to floor/connection to ceiling/fixation+tensioning). This logic is allowing a wide scope of potential configurations (see page 12 for examples). The dismantled posts can be stored in dedicated areas next to the street facade.







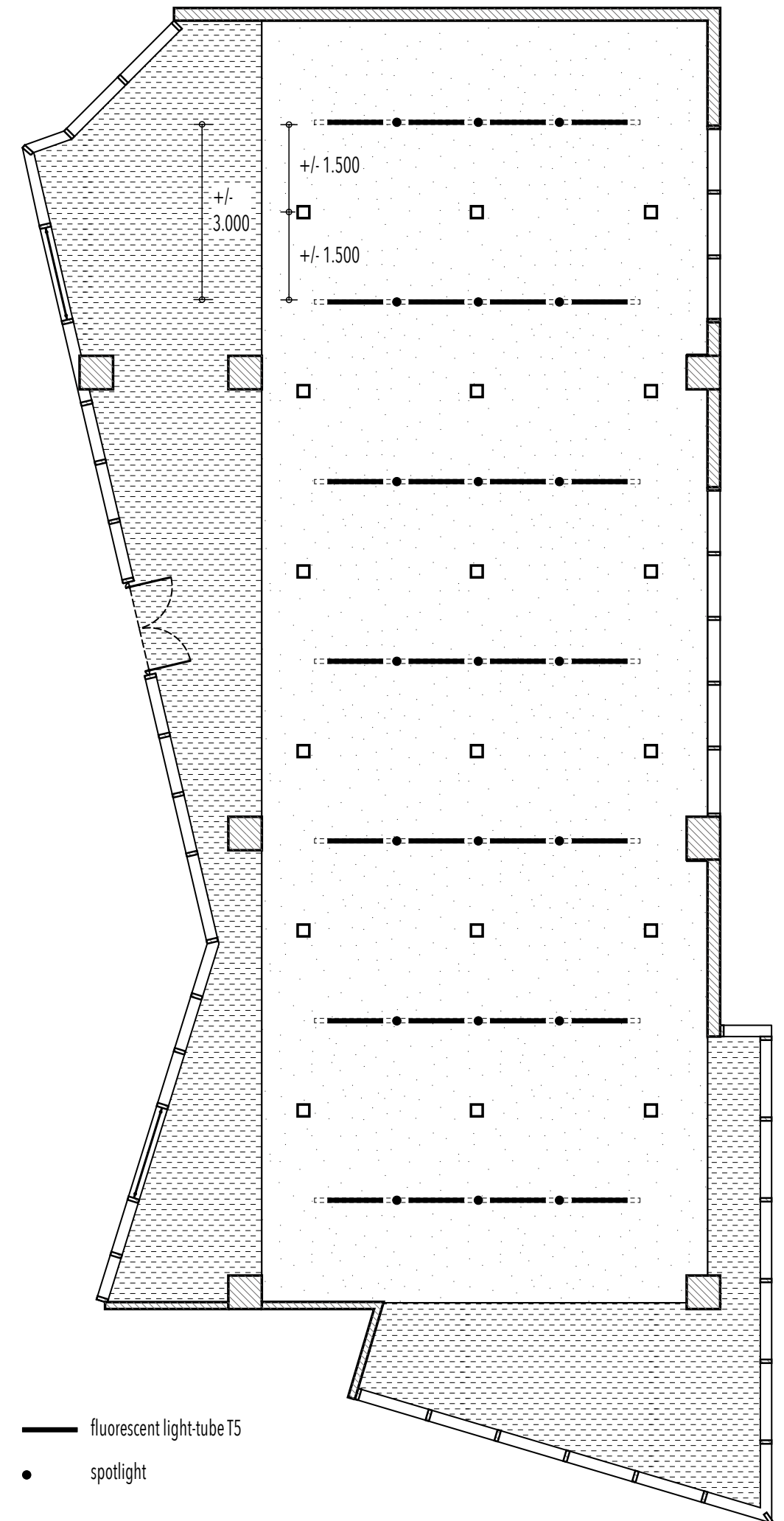
05.LIGHTING

Transversely located in between the posts (1.5 metre away from potential display), the lighting grid is supporting a regular pattern of non-dimmable T5 fluorescent light-tubes embedded within a 80x80x6.000mm stainless steel U channel. The level of the lighting grid is 3.400mm from the floor, hence 100mm above the vertical display maximum height and below all building services (see page 17).

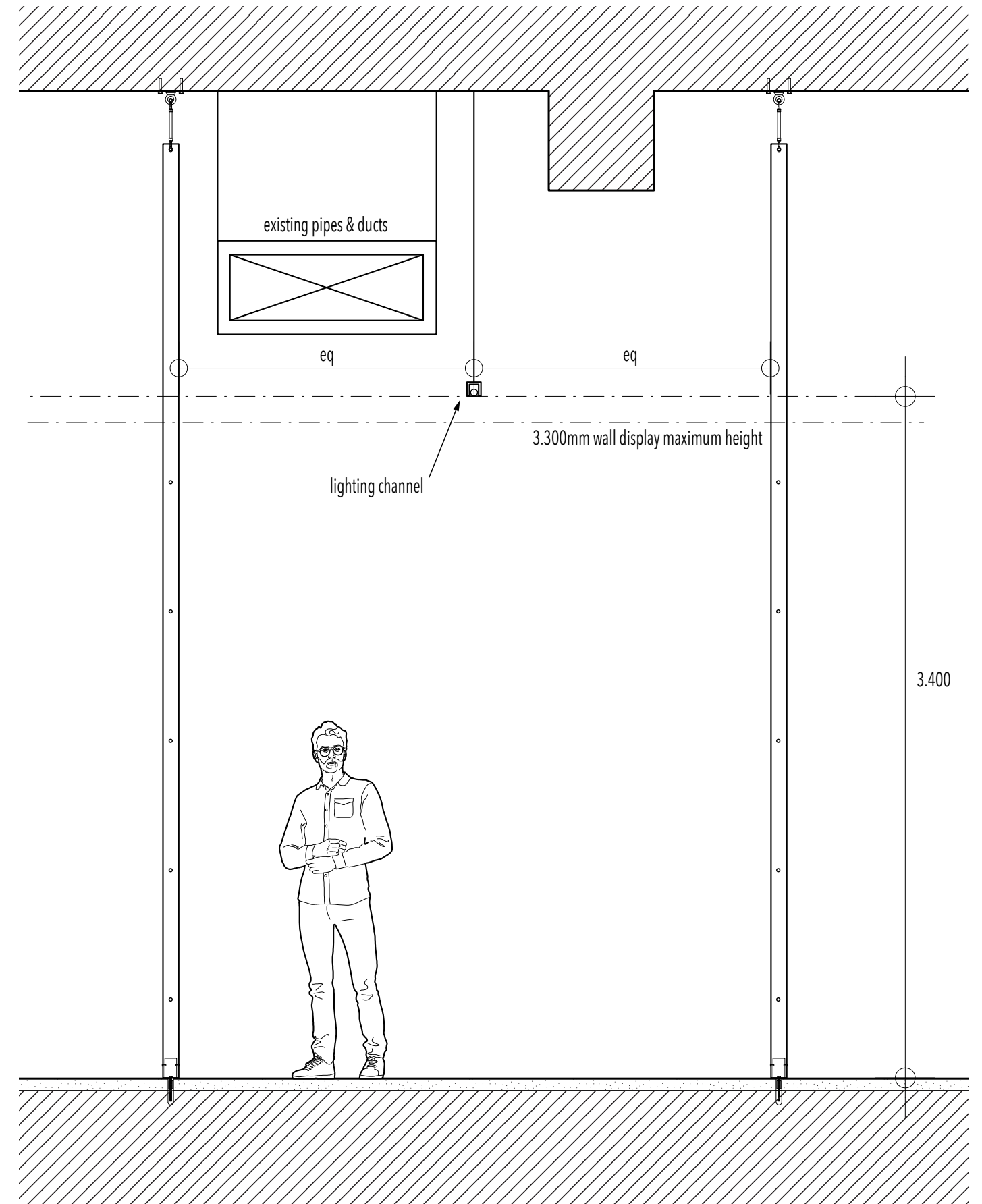
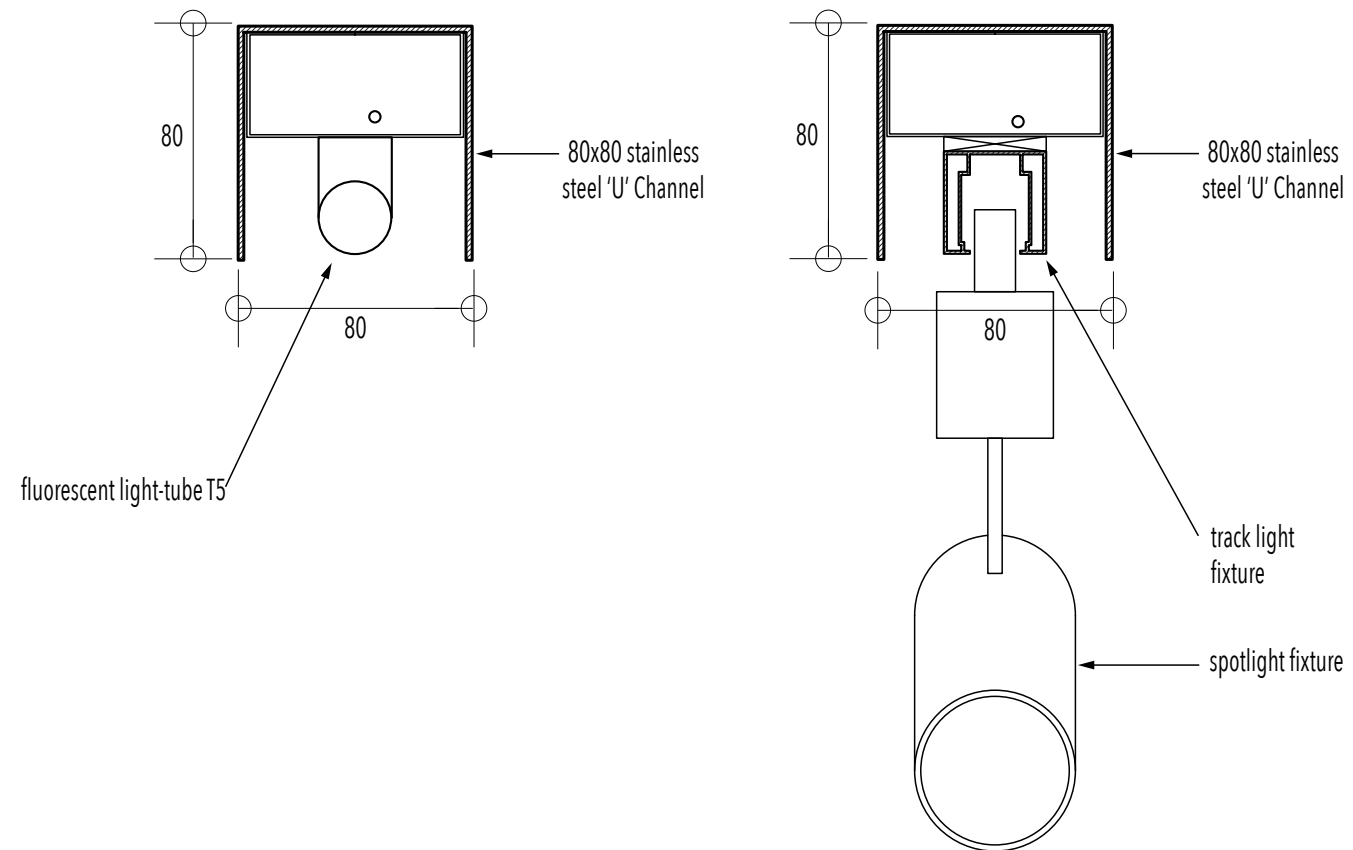
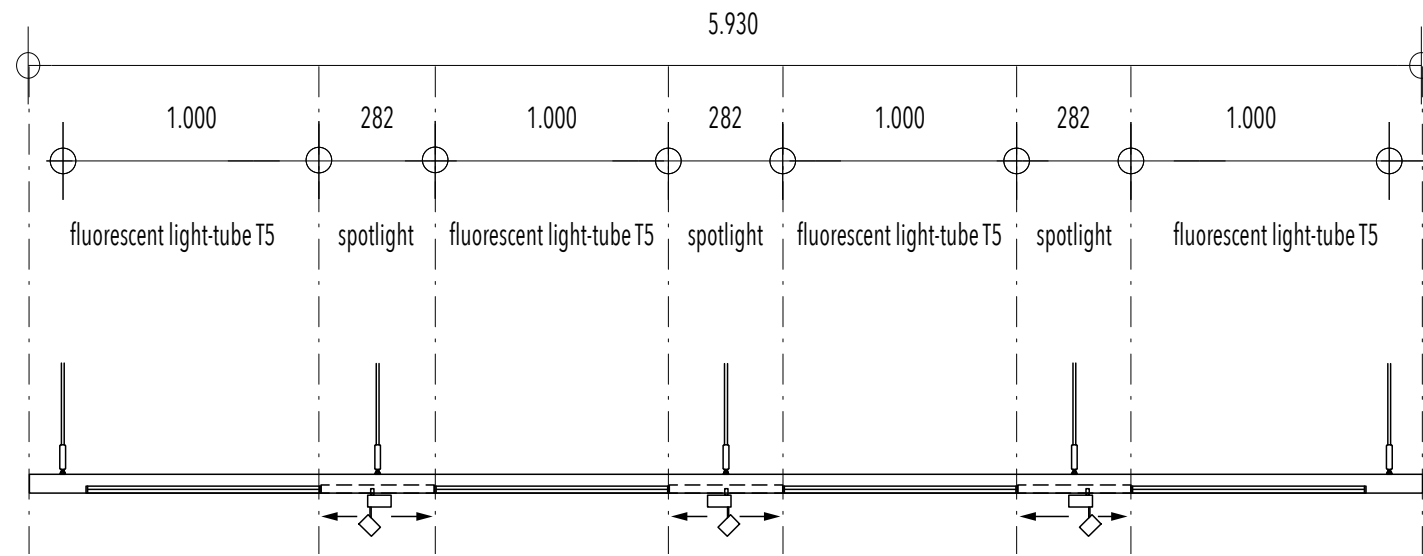
In between each tubes, a 280mm long track is foreseen to receive additional spotlights according to scenographic needs (see opposite and page 16).

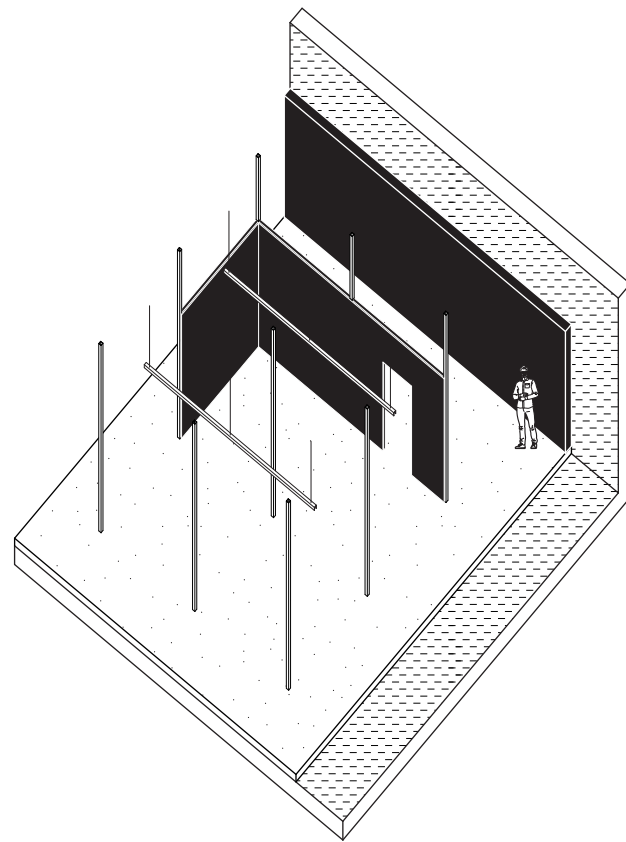
The gallery proposes one full set of 3.000K colour temperature (warm) and one full set of 4.000K colour temperature (cold).

See also the technical/electrical plan on page 37 for more details about control/grouping..



- fluorescent light-tube T5
- spotlight





06.WALL

The gallery proposes two main wall types:

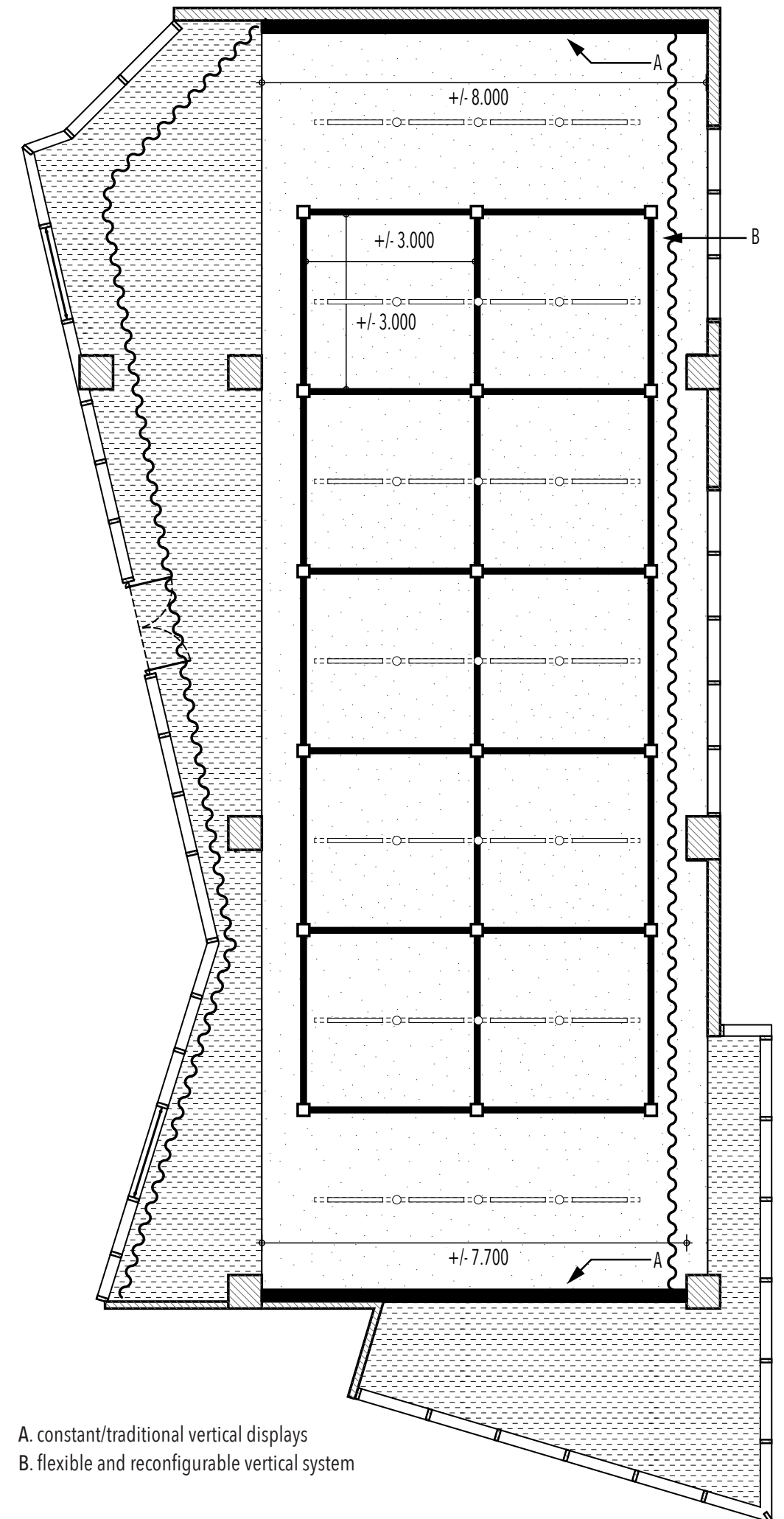
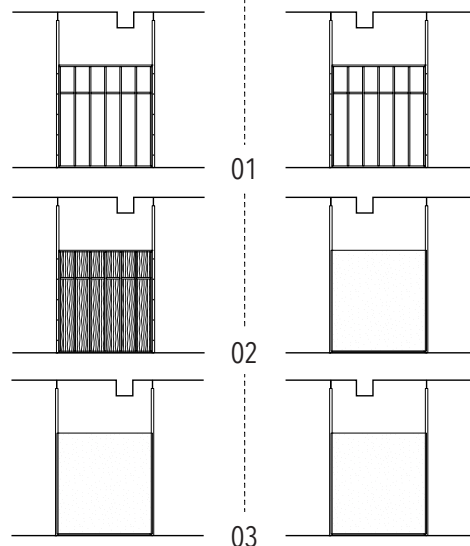
A: Two constant/traditional vertical displays framing the exhibition zone

B: A flexible and reconfigurable vertical system organised and supported by the posts grid

plasterboard layer. Plasterboard is painted (ditto). Recommended constructive details can be found on pages 24 and 25. Multiple combinations and potential openings are possible as illustrated on pages 26 and 27.

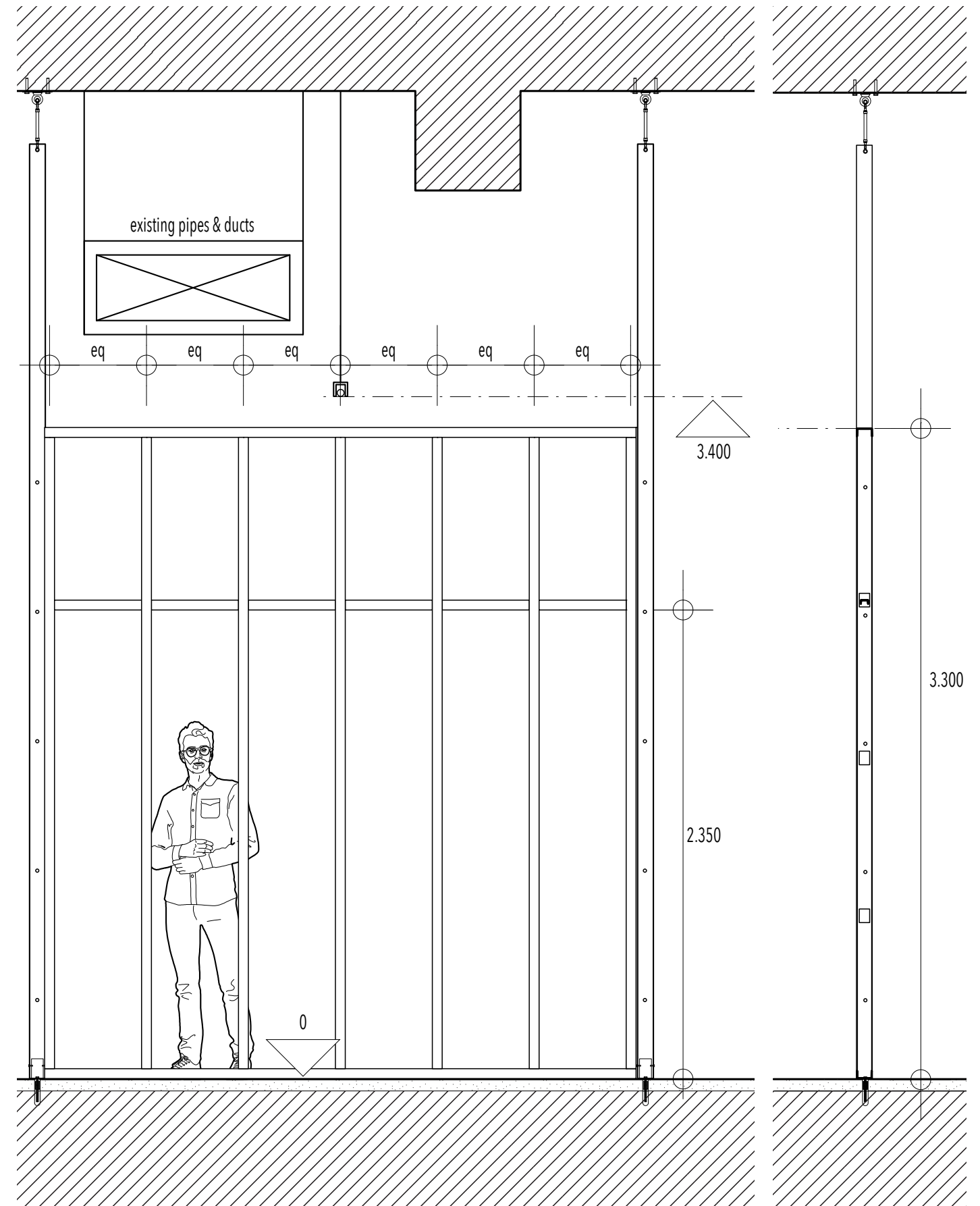
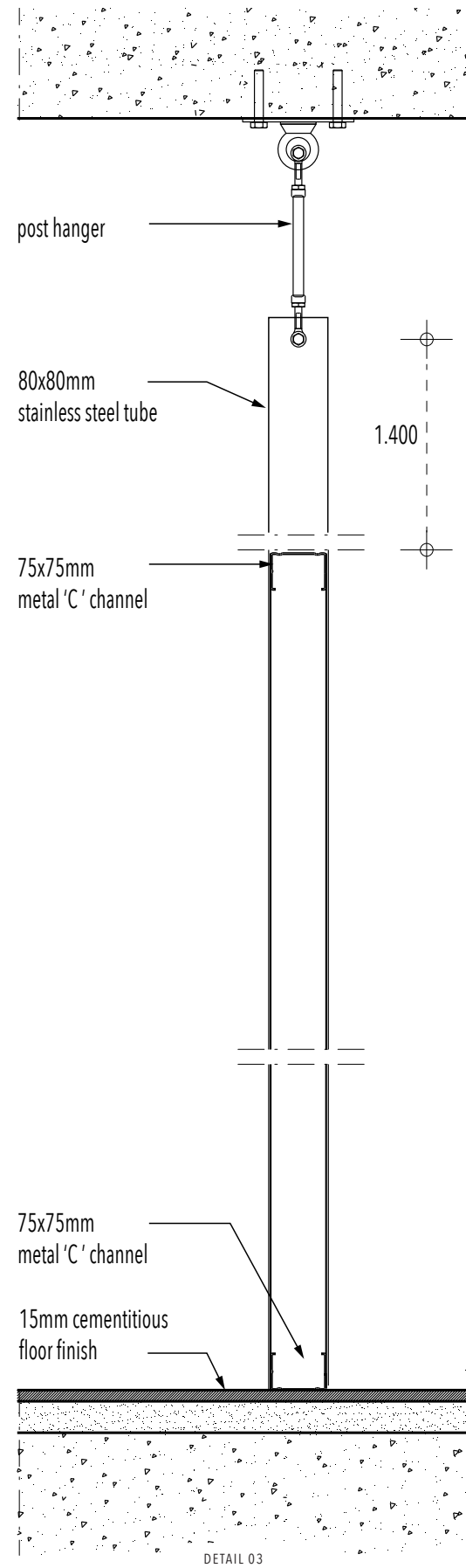
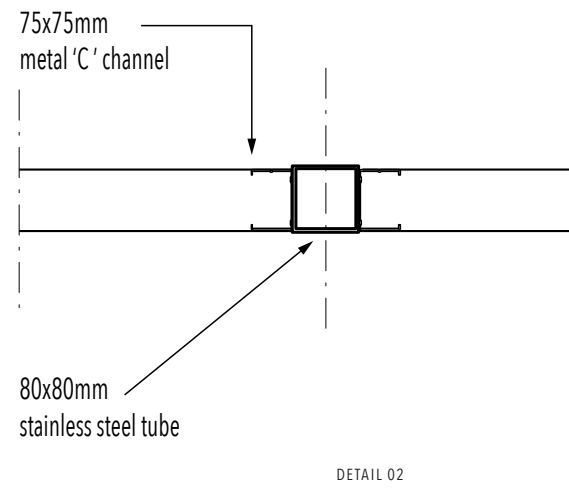
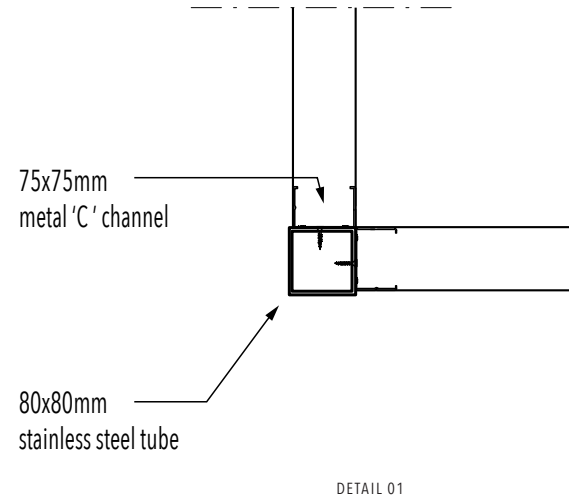
This vertical system can take multiple forms:

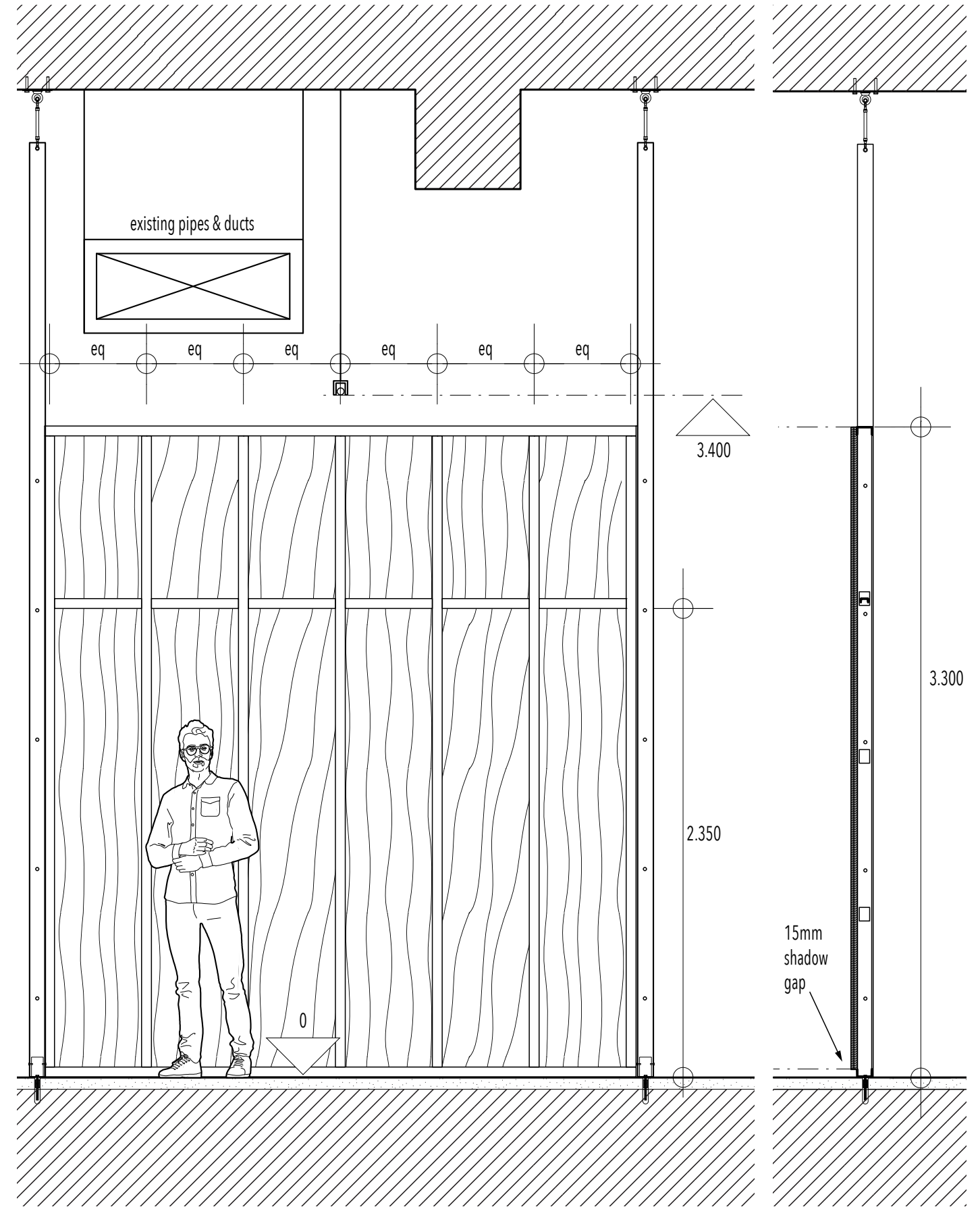
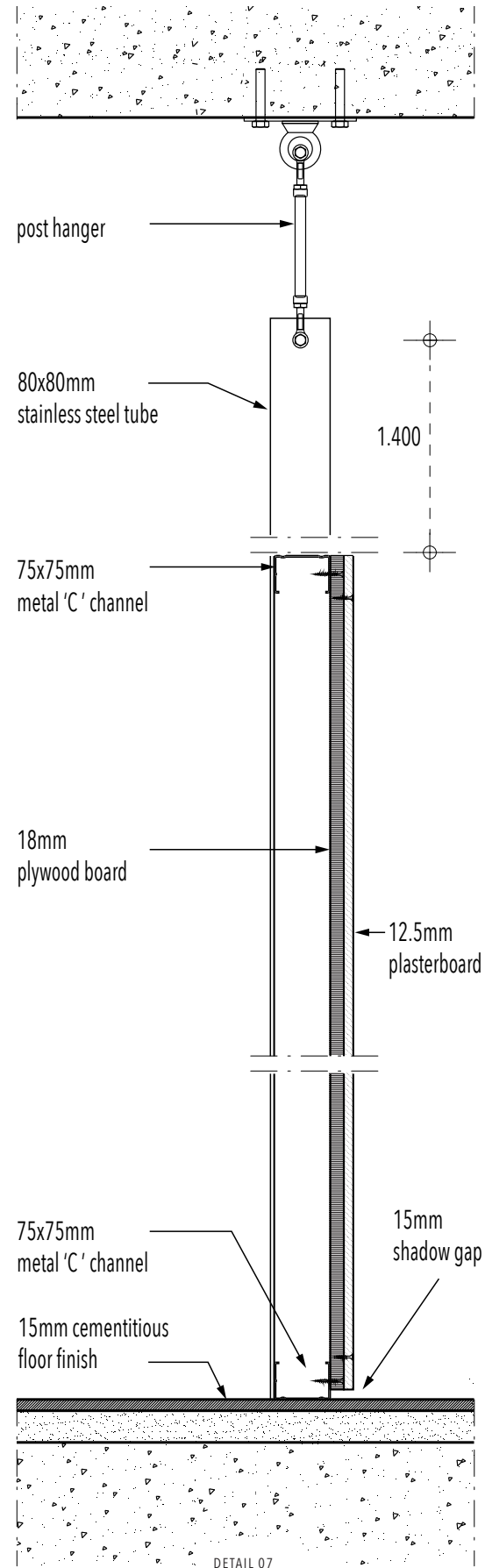
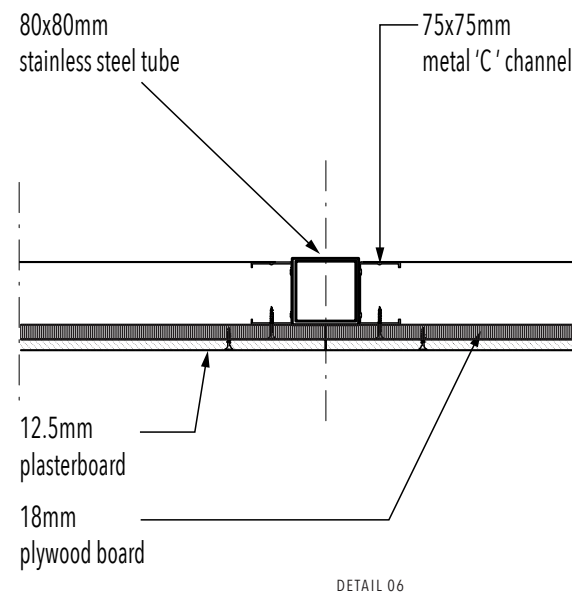
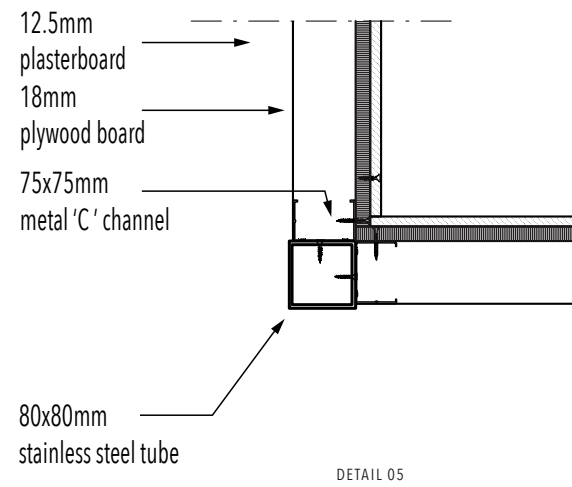
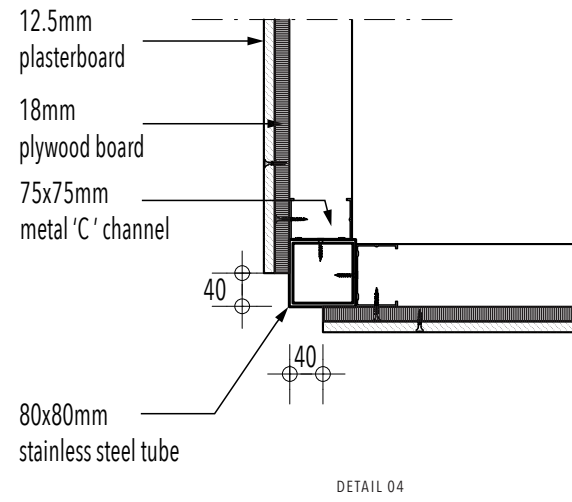
Each of these configurations is the result of the progressive increment of constructive components. The "filter" wall (01) is made out of standard dry-wall galvanised steel "C" channels. They are directly assembled to the posts as illustrated on pages 20 and 21. The "single-sided" wall (02) consists in the addition of one plywood and plasterboard layer. Plywood is left "as-is" and plasterboard is painted (original colour: DULUX 30BG72/017 swiss white). Recommended constructive details can be found on pages 22 and 23. The "double-sided" wall (03) is covered on both sides with one plywood and

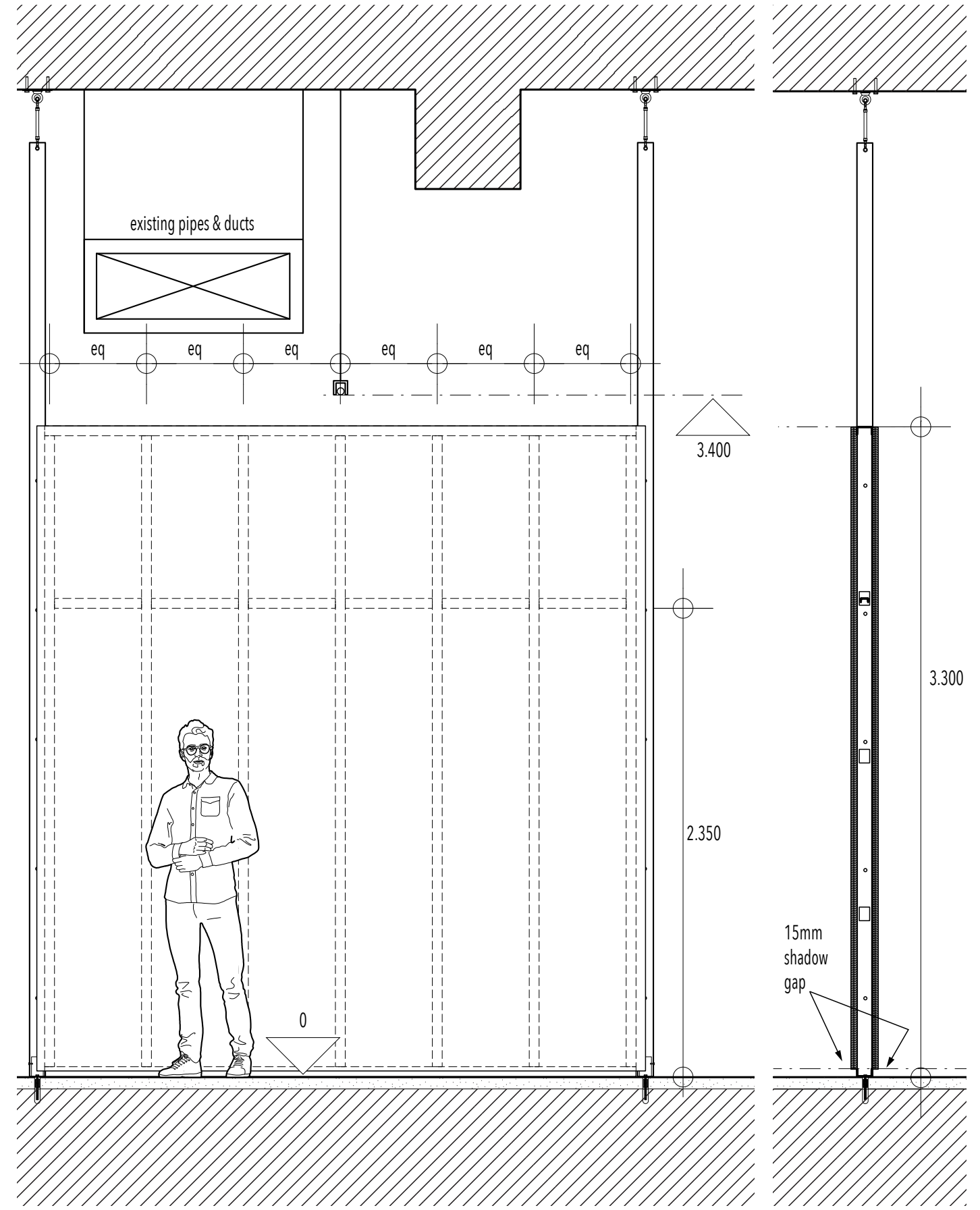
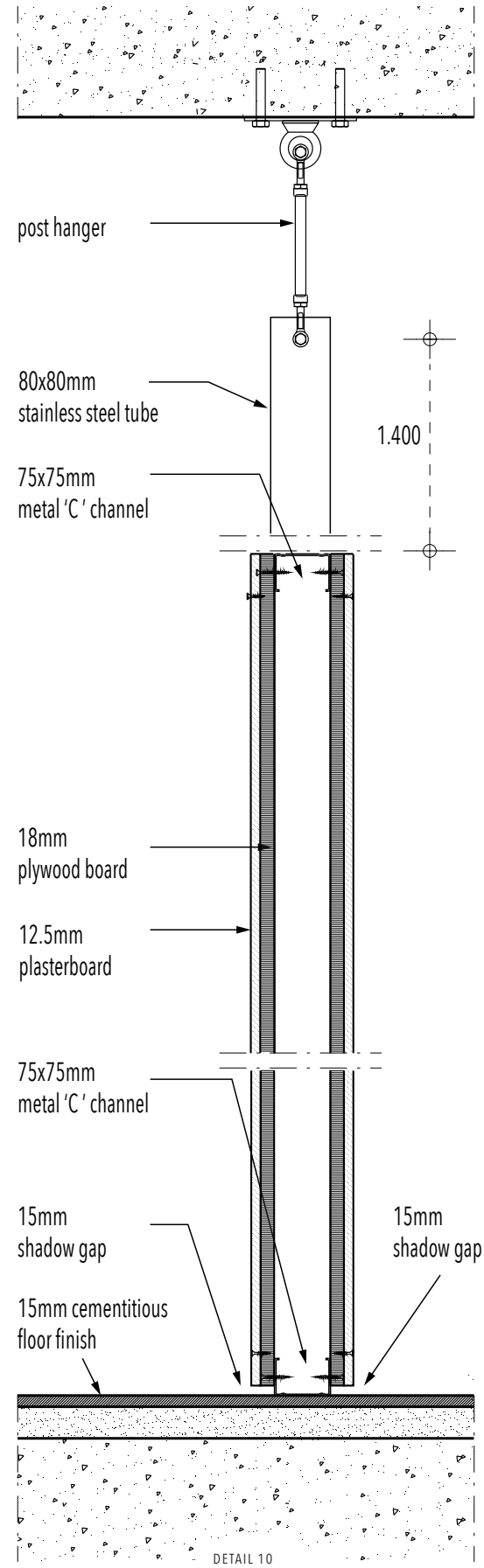
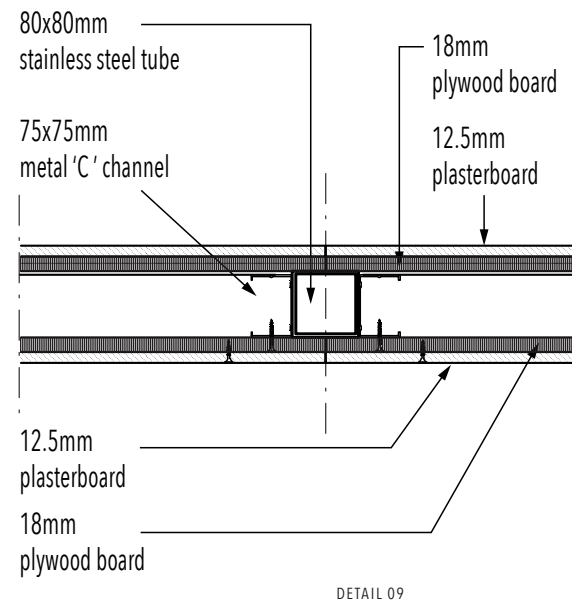
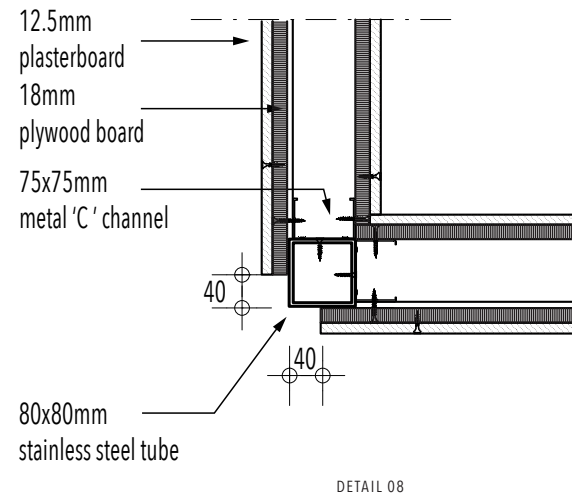


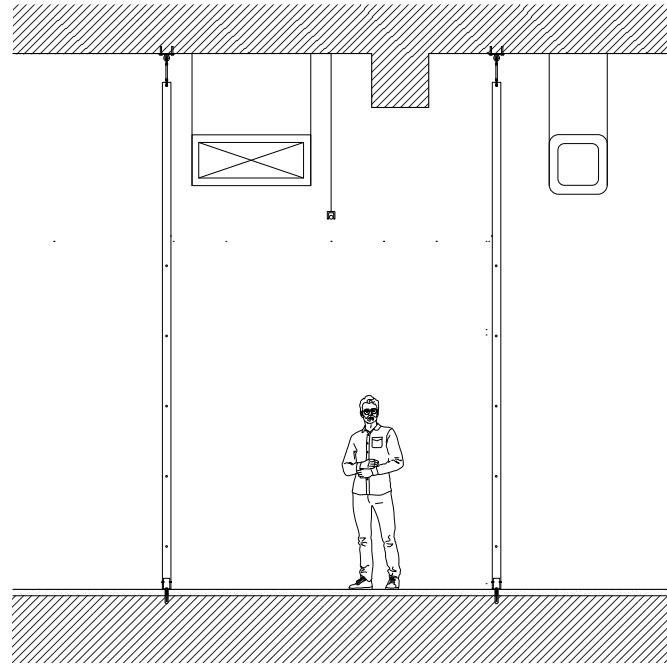
A. constant/traditional vertical displays

B. flexible and reconfigurable vertical system

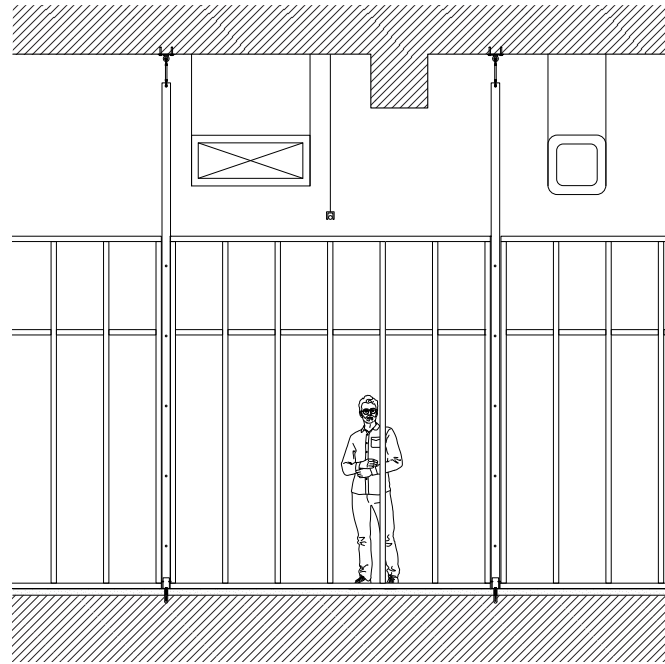




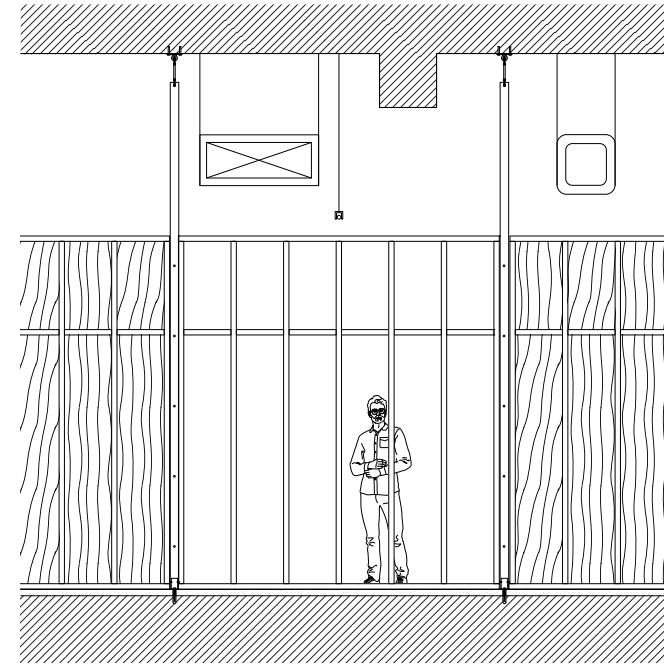




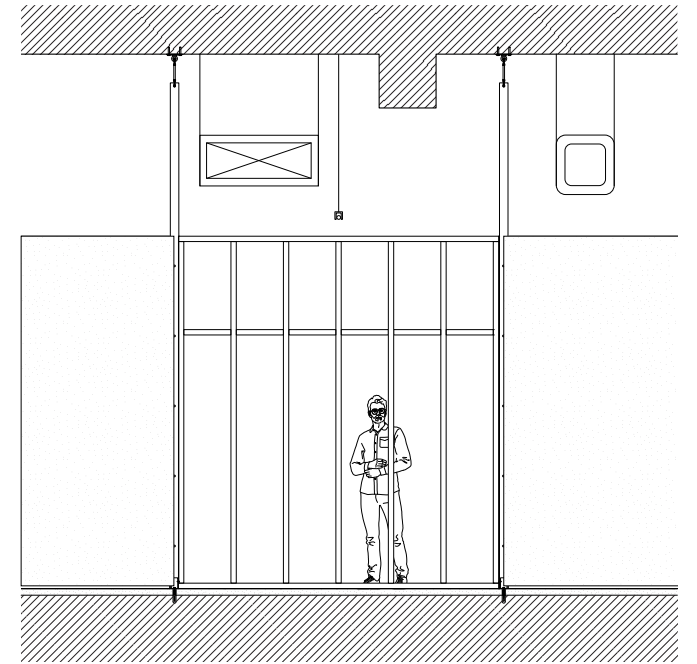
ELEVATION 01



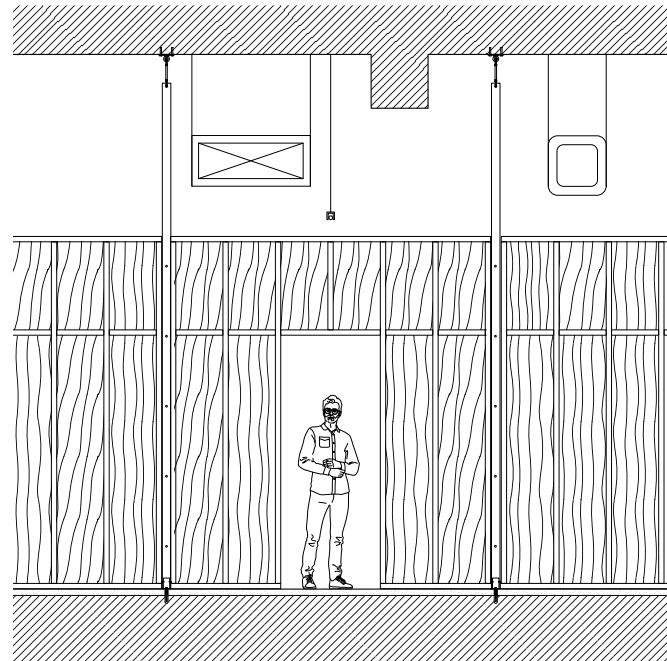
ELEVATION 02



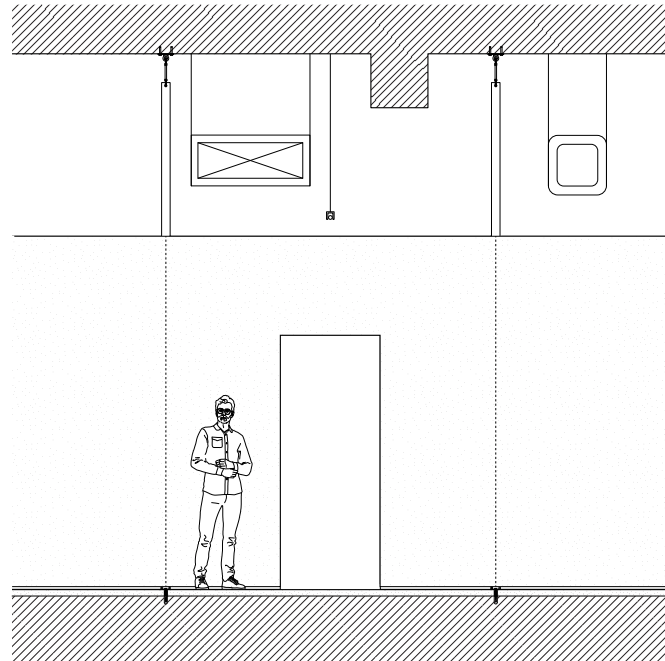
ELEVATION 03



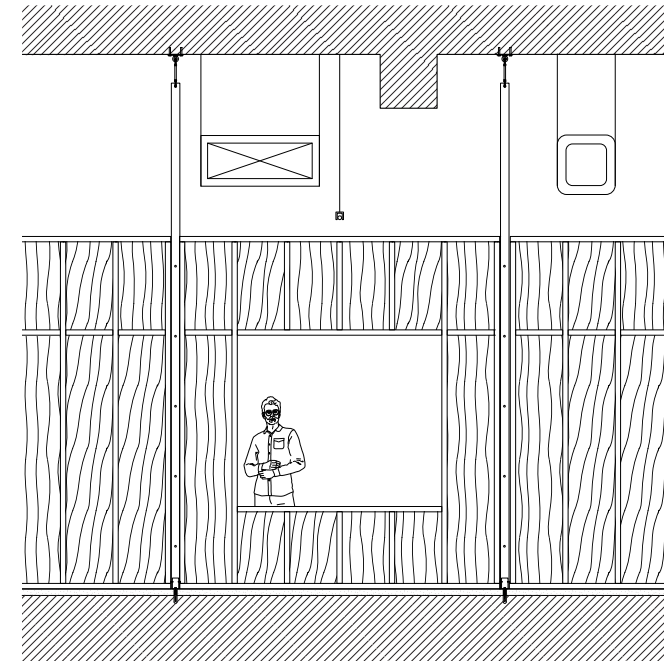
ELEVATION 04



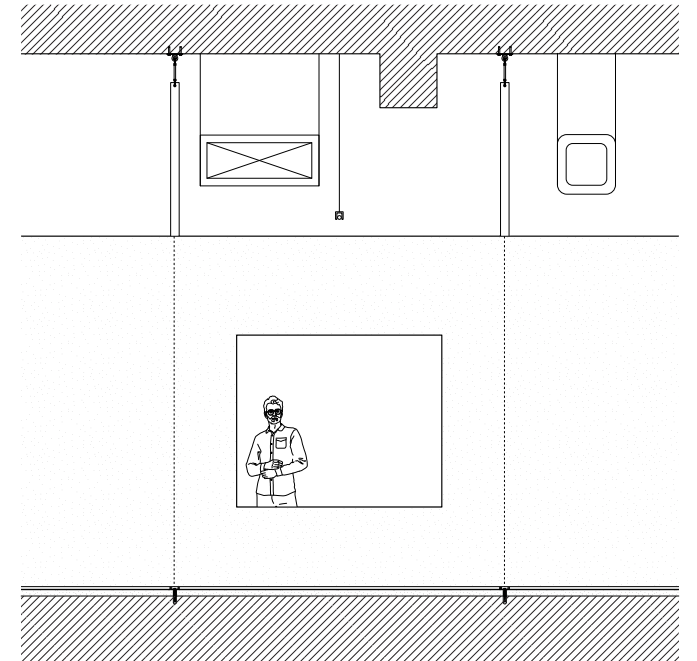
ELEVATION 05



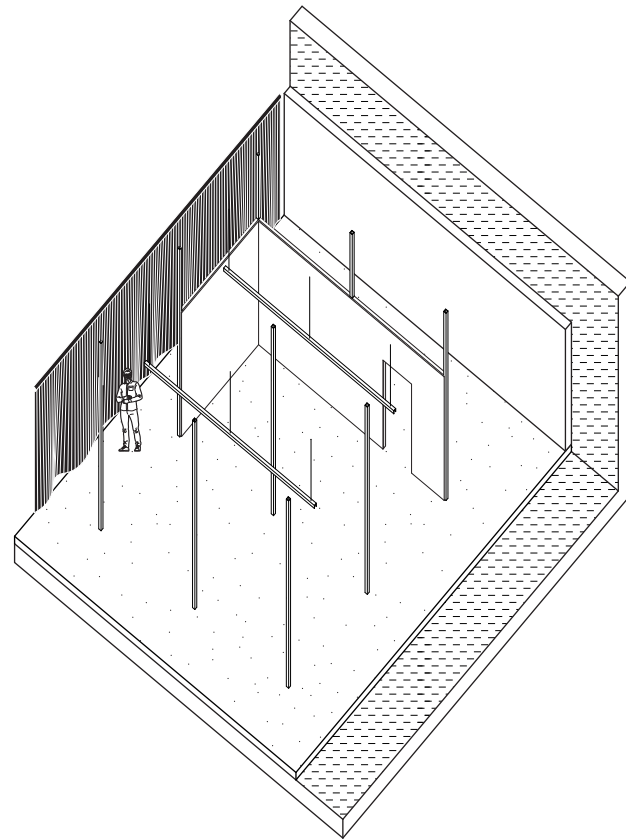
ELEVATION 06



ELEVATION 07



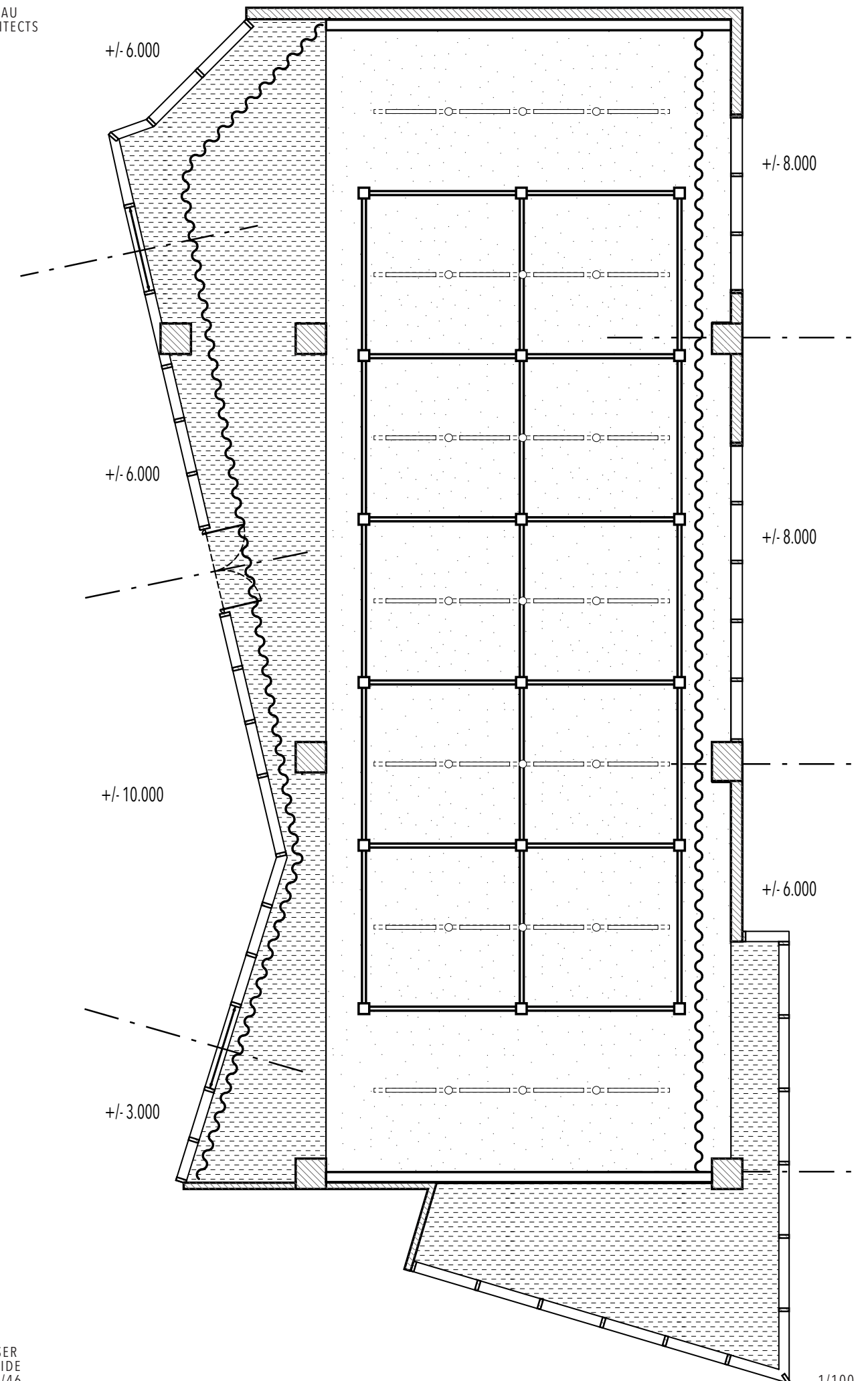
ELEVATION 08

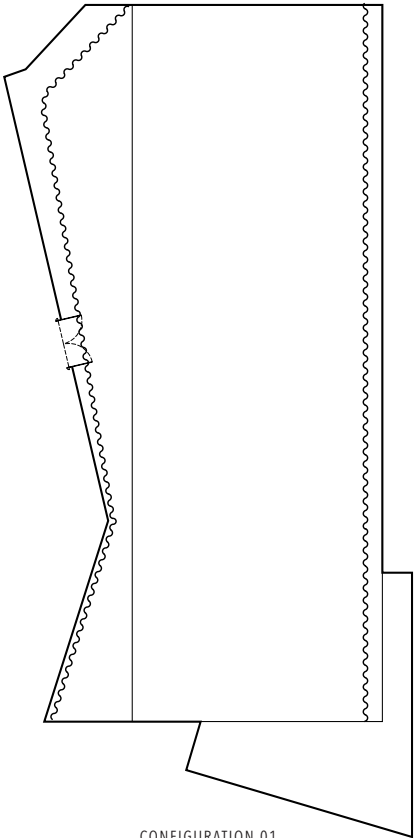


07.CURTAINS

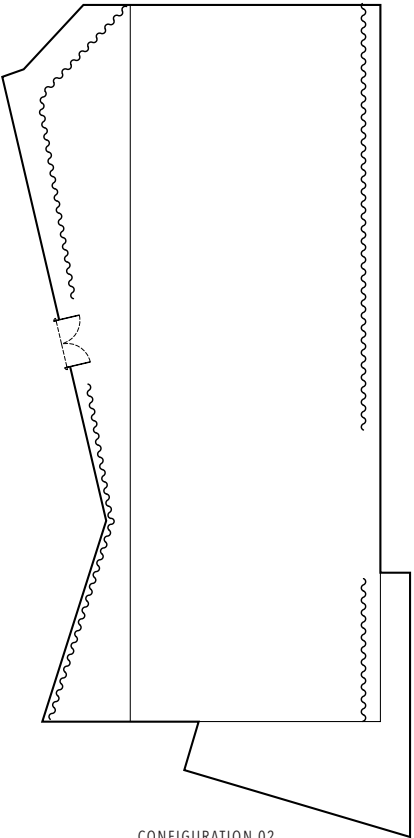
Translucent curtains are placed along the two main facades so as to modulate light and views. They are divided into multiple pans as illustrated on the opposite page (axis lines) allowing various configurations. If need be, they can also be entirely removed. See page 30 for examples of configuration.

The curtains are supported by continuous railing allowing the curtains to be perfectly aligned with the vertical displays recommended height (3.300mm).

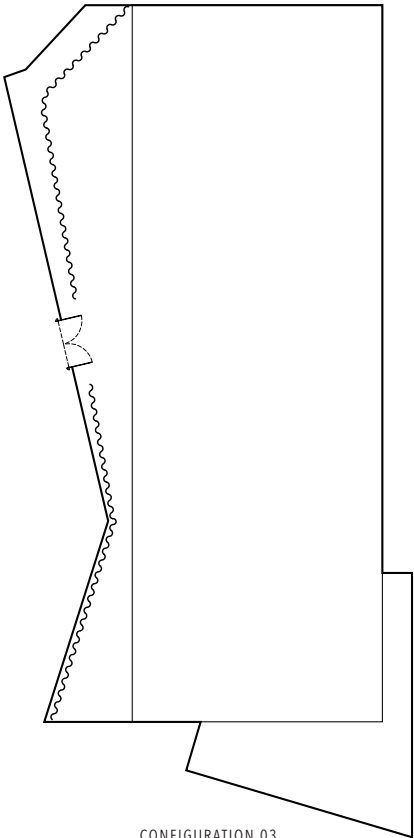




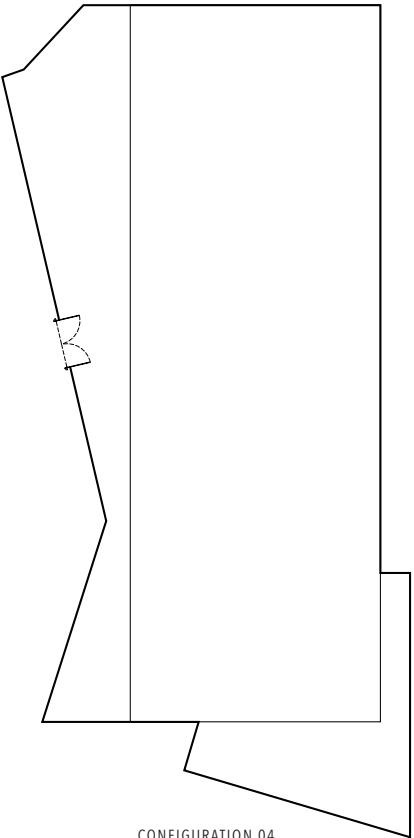
CONFIGURATION 01



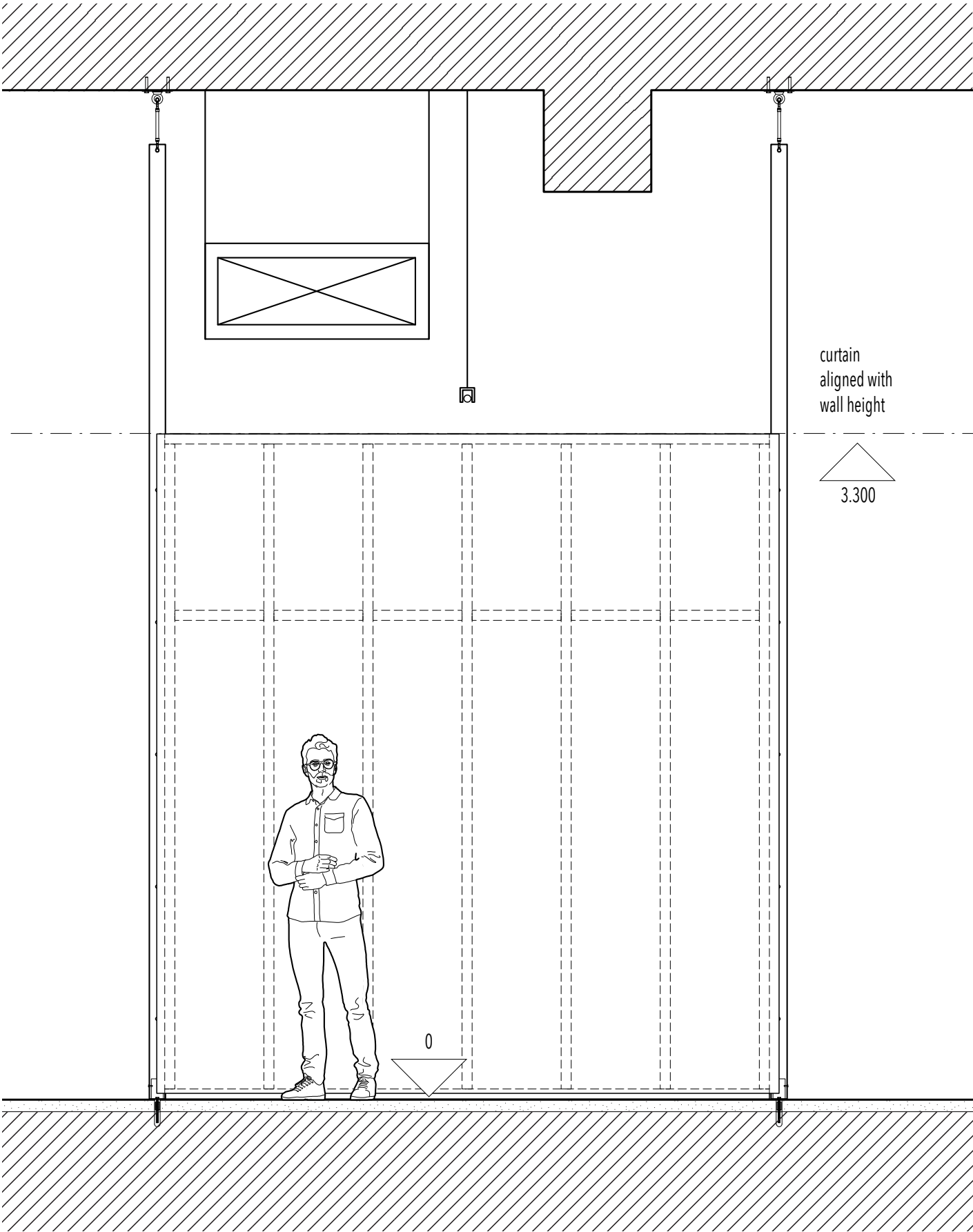
CONFIGURATION 02

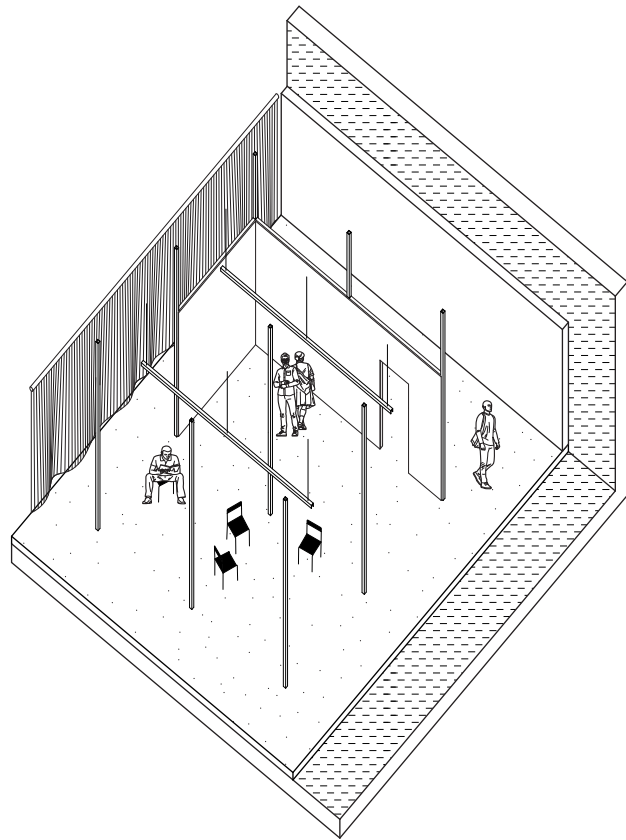


CONFIGURATION 03



CONFIGURATION 04





08.CHAIRS

8 chairs are available in the exhibition zone so as to encourage visitors to experience a different visit pace or help exhibitors to organise small talks and performances. They are light, easily displaceable and stackable.

Model: "20-06" Stacking Chair

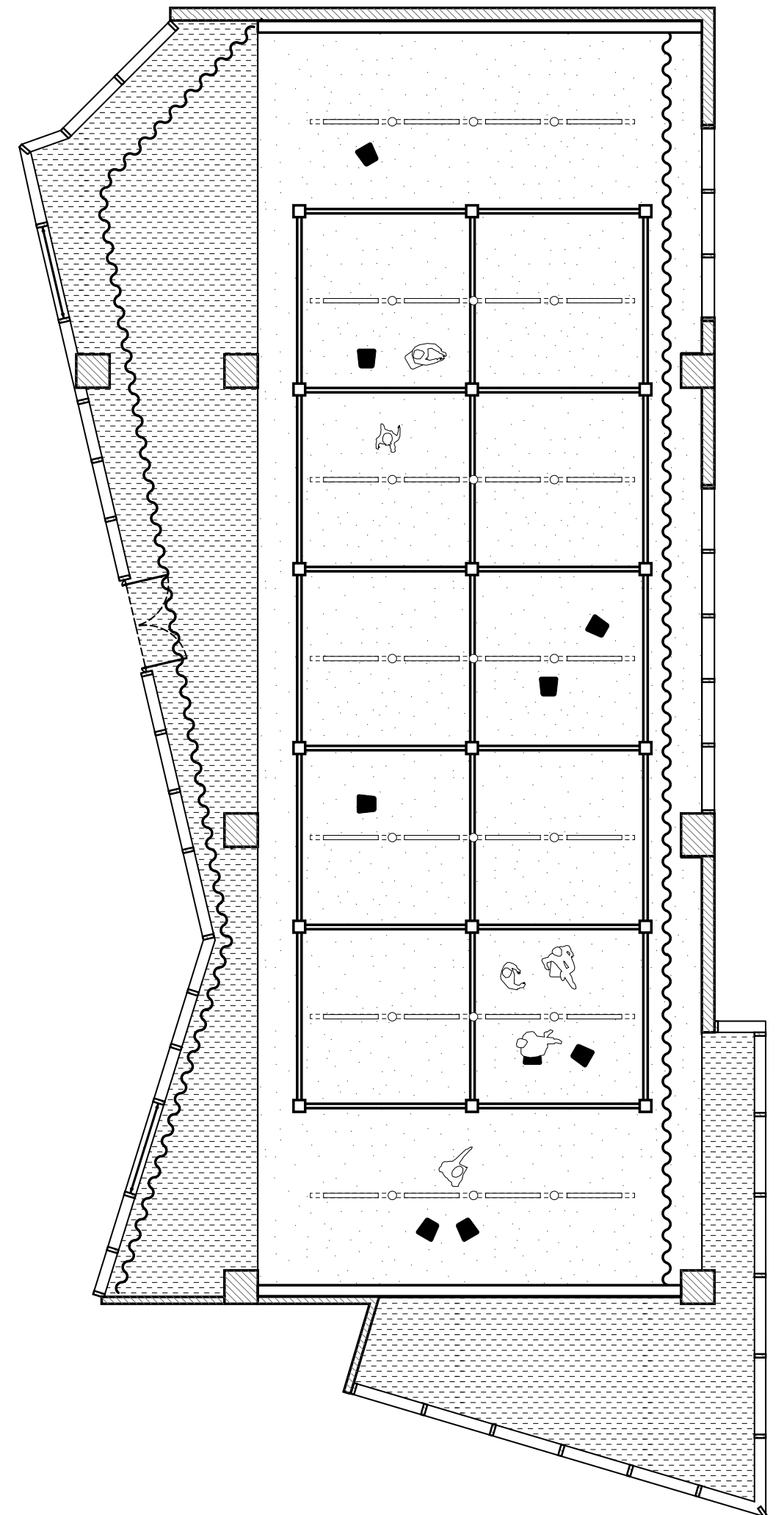
Designer: Norman Foster

Manufacturer: Emeco

Material: hand brushed recycled aluminium

Dimensions(mm): 470(W)x495(D)x800(H),
460(seat H)

Weight: 3.2kg




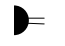


Main architectural plan of the gallery (scale 1/100). A simplified version to draft exhibition layouts can be found on page 45. It is recommended to verify dimensions on site in case of doubt or need of extreme precision.

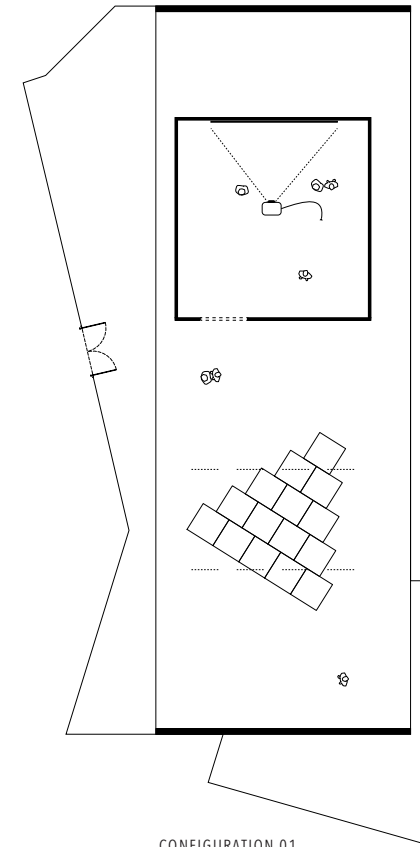
Main architectural plan of the gallery (scale 1/100). A simplified version to draft exhibition layouts can be found on page 45. It is recommended to verify dimensions on site in case of doubt or need of extreme precision.



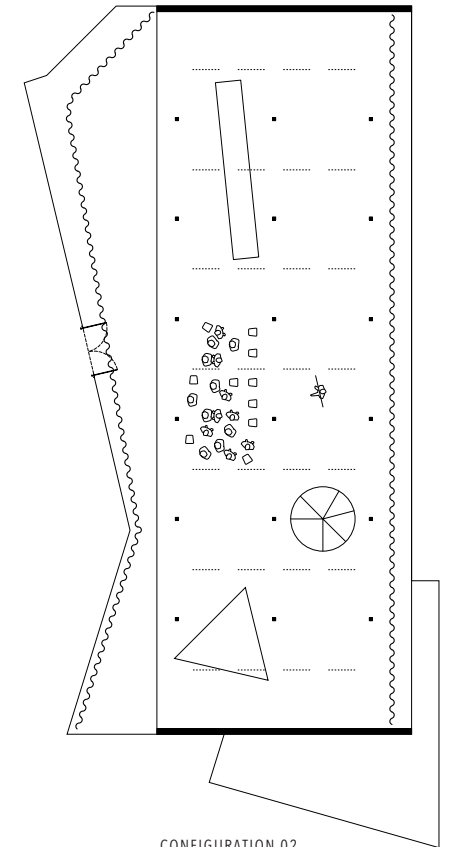
10.RCP (E&M & ELECTRICAL)

Main technical reflected ceiling plan of the gallery (scale 1/100). Temperature is controlled via 9 Fan Coil Units (FCU). They can be individually regulated. Light channels are grouped into 4 independent sets (3 for the exhibition zone, 1 for the entrance/buffer zone). Electrical plugs are mainly located on the street façade wall. Additional ones can be found on the ceiling.

- FCU FAN COIL UNIT (X 9)
-  LIGHT POINT
-  WALL MOUNTED PLUG
-  CEILING MOUNTED PLUG
-  SWITCH
- LIGHTING CONTROL



CONFIGURATION 01



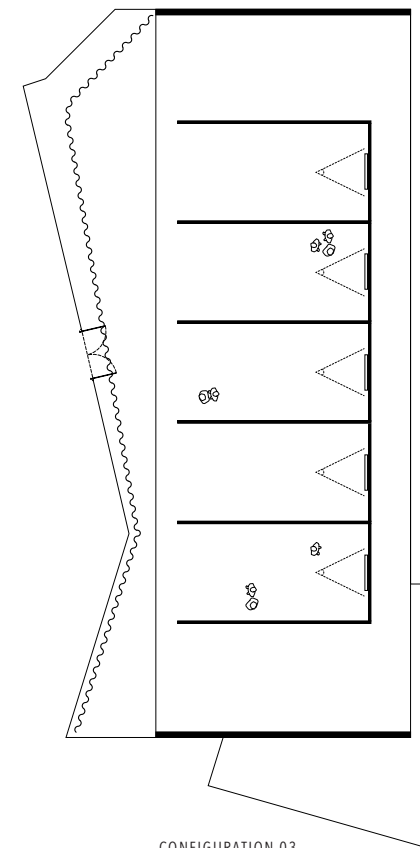
CONFIGURATION 02

11.CONFIGURATIONS

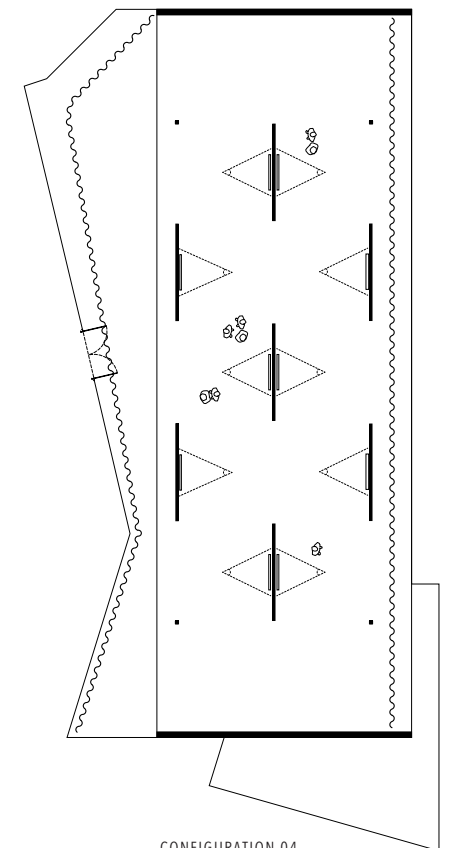
The gallery is designed as an architectural system allowing curators and artists to transform the space according to their needs and vision. The above-described principles can be recombined to offer an almost endless array of configurations.

Potential scenarios are illustrated on the opposite page. They demonstrate the potential of the gallery to host exhibitions based on paintings, large artworks, installations, performances, projections, etc.

The following pages constitute an archive of the on-going or previous shows, including pictures and detailed plan.



CONFIGURATION 03



CONFIGURATION 04

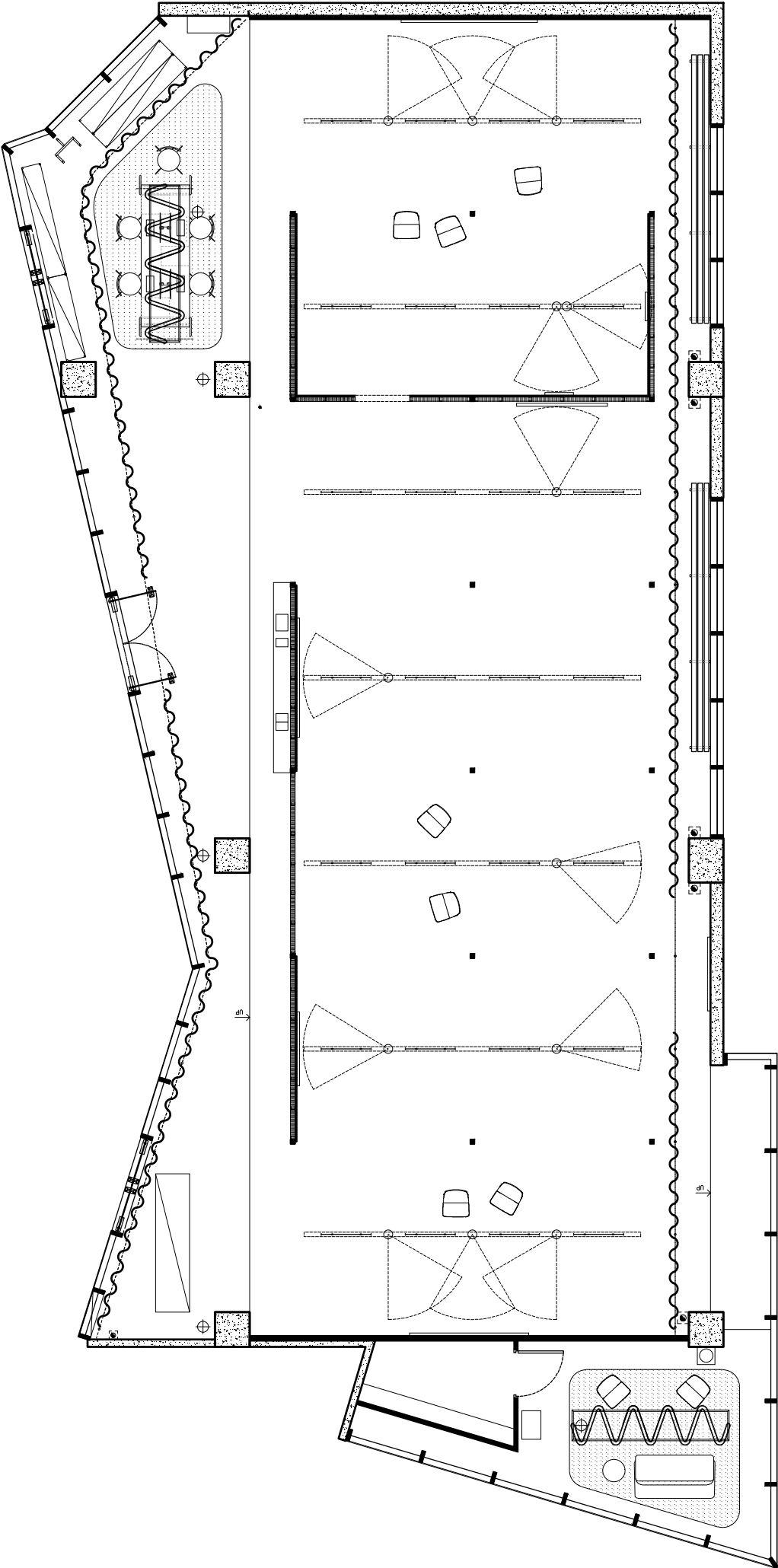


BEAU
ARCHITECTS

FIRST SHOW
CONFIGURATION

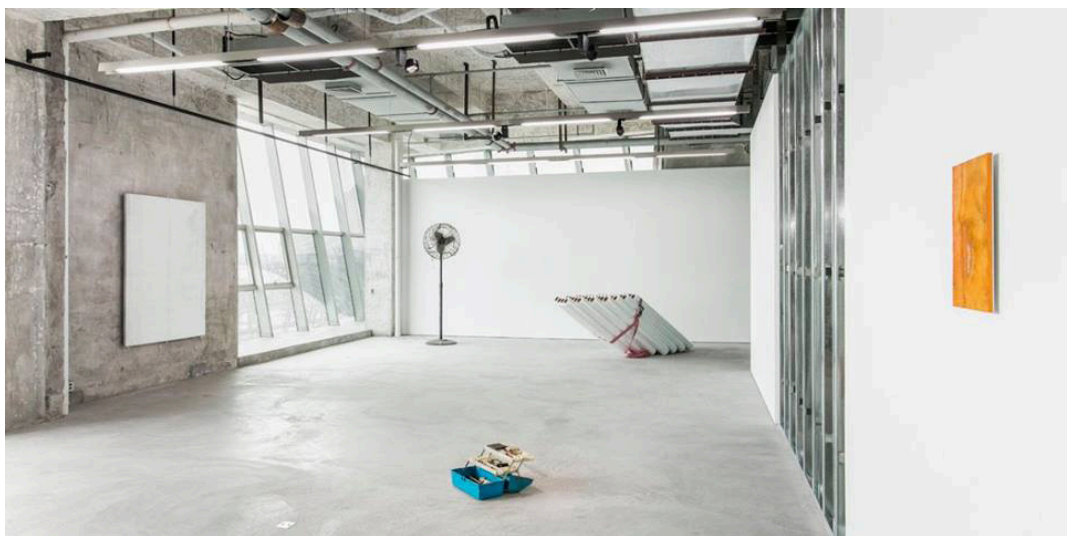
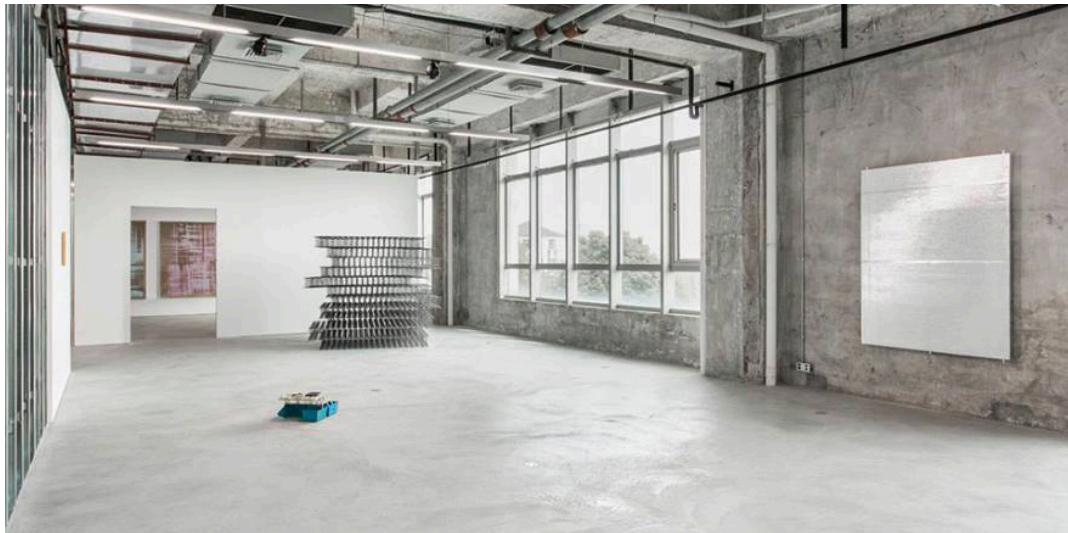
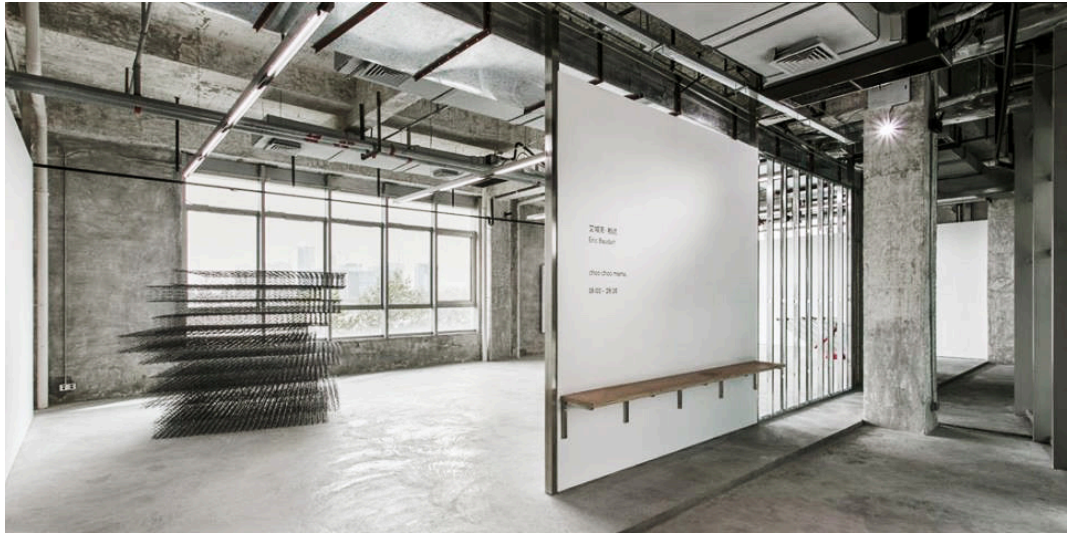
CUI XINMING
"FESTIVAL"
06.11.16-23.12.16

BEAU
ARCHITECTS



EDOUARD MALINGUE
GALLERY SHANGHAI
40 / 46

USER
GUIDE
41 / 46

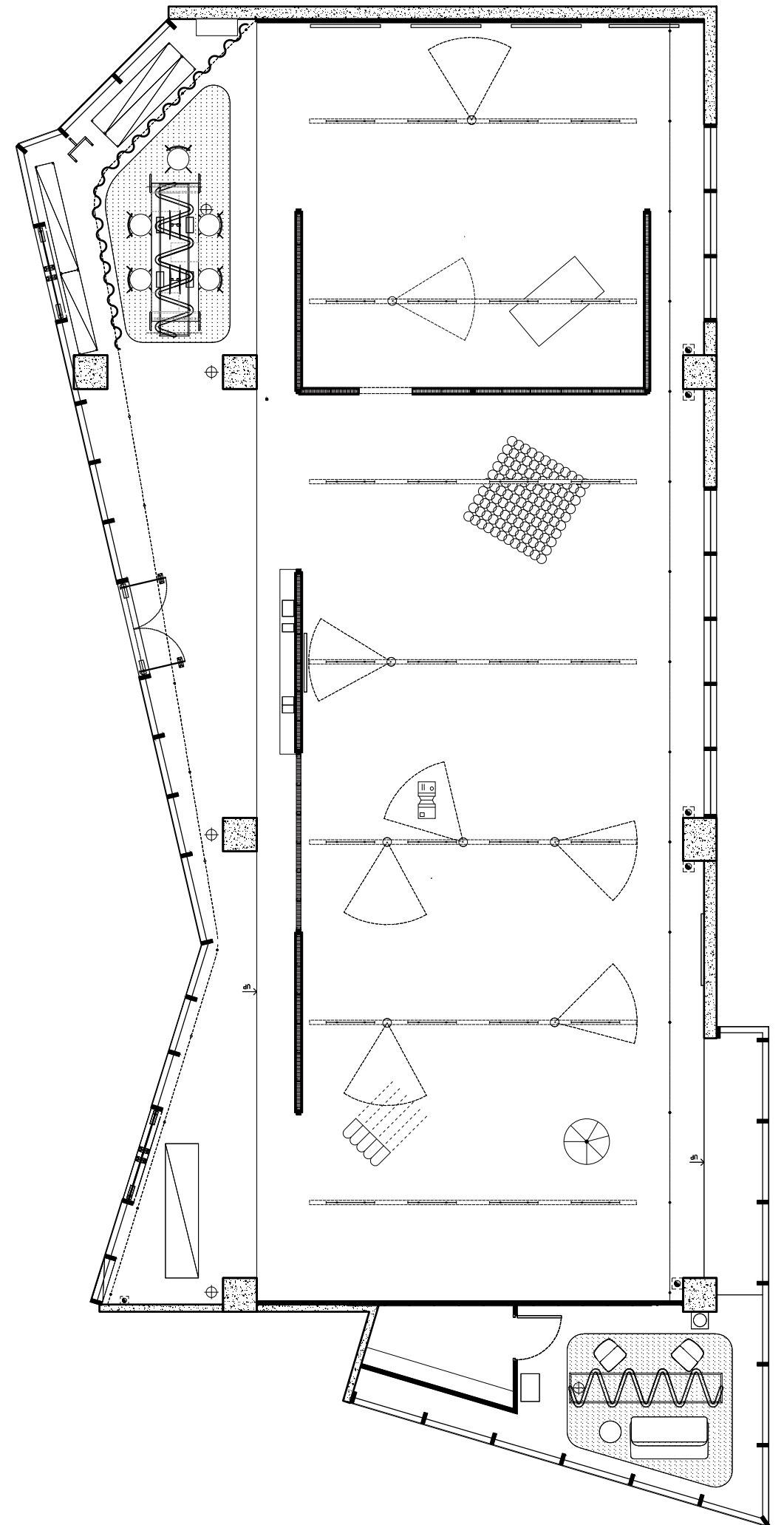


BEAU
ARCHITECTS

SECOND SHOW
CONFIGURATION

ERIC BAUDART
"CHOO CHOO MAMA..."
18.03.17 - 28.05.17

BEAU
ARCHITECTS



EDOUARD MALINGUE
GALLERY SHANGHAI
42 / 46

USER
GUIDE
43 / 46

12.PLAN & CONTACTS

A neutral plan scale 1/100 is available on the opposite page to draft potential layouts.

The following persons can be contacted for technical or scenographic advice:

ARCHITECT:
BEAU ARCHITECTS
MR. GILLES VANDERSTOCKEN / HELLO@BEAU.HK / +852 62160743
MR. ERIC YUEN / ERIC@BEAU.HK / +852 9359 1930

MAIN CONTRACTOR:
RUNWANG
MR.LIU HONGJIAN / H_RUNWANG@126.COM / +86 1868052995

LIGHTING SUPPLIER:
(PROVIDE SPOTLIGHT TRACK AND SPOTLIGHT FIXTURE)
HONGRI
MR.LIU JASON +86 13817824598

CURTAIN CONTRACTOR:
SHOWTEX
MR.JAN BLOMME / JAN.BLOMME@SHOWTEX.COM / +86 15507579262,
HONG KONG MOBILE +852 97285800

