

BEAU ARCHITECTS

SELECTED WORKS



BEAU ARCHITECTS

TEAM MEMBERS:

CHARLOTTE LAFONT HUGO
 GILLES VANDERSTOCKEN
 ERIC YUEN
 ANGELA PANG
 THET HTOO ZIN

OFFICE ADDRESS:

135 LAI CHI KOK ROAD, M/F PRINCE EDWARD, KOWLOON HONG KONG

BEAU ARCHITECTS WAS FOUNDED IN HONG KONG IN 2014. SINCE THE BEGINNING, THE OFFICE IS FOCUSING ON ART-RELATED PROJECTS: GALLERIES, EXHIBITIONS, ARTWORKS AND ART CENTRES. THANKS TO ITS ACTIVE AND COLLABORATIVE RELATION WITH ALL PARTIES, FROM ARTIST TO CURATORS, FROM TECHNICAL SPECIALISTS TO CONTRACTORS, BEAU ARCHITECTS HAS GAINED A VALUABLE KNOW-HOW ALLOWING THEM TO PRODUCE SHARP, SINGULAR AND EFFICIENT PROPOSALS.

2018

- "A HOLLOW IN A WORLD TOO FULL", ARCHITECTURE (EXHIBITION), HONG KONG
- "P-SCAPE", PRODUCTION (ART), HONG KONG
- "DISMANTLING THE SCAFFOLD", ARCHITECTURE (EXHIBITION), HONG KONG
- "NUCLEUS", PRODUCTION (ART), HONG KONG
- "ART HAUS", ARCHITECTURE, (ART SPACE), HONG KONG
- "CENTRE FOR HERITAGE ART & TEXTILE (CHAT)" ARCHITECTURE, (ART SPACE), HONG KONG
- "TSINGHUA UNIVERSITY SCIENCE MUSEUM" ARCHITECTURE COMPETITION WITH HENNING & LARSEN, BEIJING

< ONGOING / COMPLETION 2018

"MAO YAN" ARCHITECTURE (EXHIBITION), NANJING

< ONGOING / COMPLETION 2019

"TONGREN ROAD" ARCHITECTURE (ART SPACE & HOUSING), SHANGHAI

< ONGOING / COMPLETION 2020

"TAI KWUN EXHIBITION DISPLAY" DESIGN (EXHIBITION), HONG KONG

< ONGOING / COMPLETION NOVEMBER 2019

"WONG CHUK STREET", ARCHITECTURE (ART WORKSHOP), HONG KONG

< ONGOING / COMPLETION 2019

"CHAI WAN ARTIST STUDIO", ARCHITECTURE (ART SPACE), HONG KONG

2017

- "TAI KWUN TABLE II", DESIGN (EXHIBITION), HONG KONG
- "THE WEIGHT OF LIGHTNESS" INK ART FROM M+ COLLECTION, ARCHITECTURE (EXHIBITION), HONG KONG
- "CHAPTER 8 : THE UPSIDE DOWN", ARCHITECTURE (COMPETITION), SEOUL
- "TAI KWUN TABLE I", DESIGN (EXHIBITION), HONG KONG
- "ZAHA HADID: THERE SHOULD BE NO END TO EXPERIMENTATION", PRODUCTION (EXHIBITION), HONG KONG

2016

- "EDOUARD MALINGUE GALLERY", ARCHITECTURE (ART GALLERY), SHANGHAI
- "OHRA CAPITAL PARTNERS", DESIGN AND ARCHITECTURE (OFFICE), HONG KONG

2015

- "M+ SIGG COLLECTION: FOUR DECADES OF CHINESE CONTEMPORARY ART", ARCHITECTURE (EXHIBITION), HONG KONG
- "NATIONA(A)L", ARCHITECTURE (POP-UP), HONG KONG
- "FUNDAMENTAL / WILLIAM LIM, 40 YEARS OF DESIGN INSPIRATION FROM THE EAST", VISUAL COMMUNICATION (EXHIBITION), HONG KONG
- "CASEIFY POP UP STORE", ARCHITECTURE (POP-UP), HONG KONG
- "REJSUN APARTMENT", ARCHITECTURE (HOUSING), HONG KONG
- "MAUSOLEUM", PRODUCTION (ART), HONG KONG

2014

"EDOUARD MALINGUE GALLERY", ARCHITECTURE (ART GALLERY), HONG KONG

2013

"DETOUR MATTERS" FROM MICROTOPIAS TO SOCIAL INNOVATION", CO-CURATION (EXHIBITION), HONG KONG

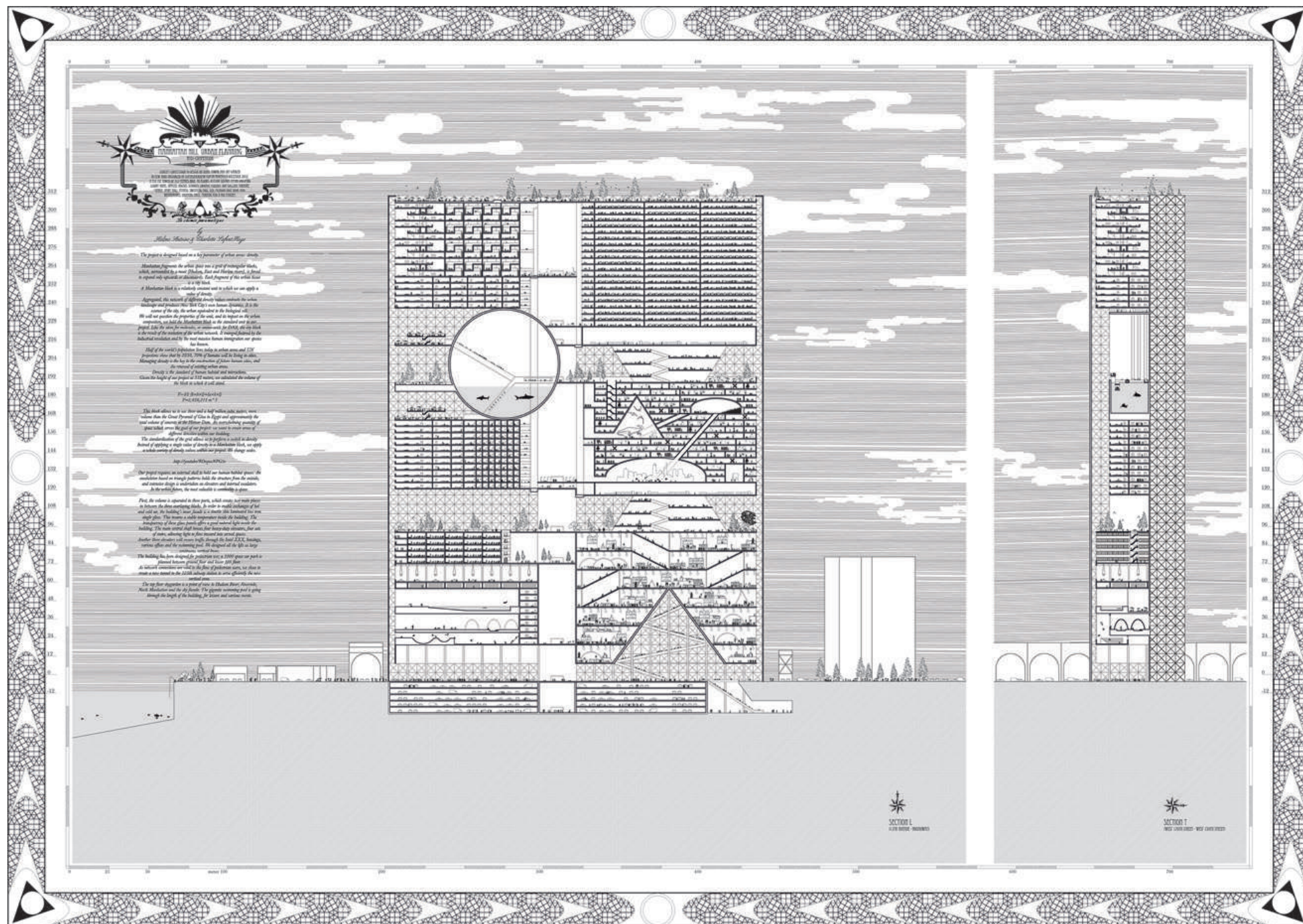
2012

"MANHATTAN HILL", ARCHITECTURE (COMPETITION), NEW YORK

01.MANHATTAN HILL

NEW YORK 2012

COMPETITION,
FIRST PROJECT UNDER THE NAME BEAU ARCHITECTS.





02.DETOUR

HONG KONG 2013

DETOUR MATTERS FROM MICROTOPIAS TO SOCIAL INNOVATION,
CURATORIAL AND DESIGN WORK,
IN COLLABORATION WITH ALVIN YIP, CÉDRIC LIBERT, LINNY SZE.

BEAU ARCHITECTS (CO-CURATOR)
PICO (CONTRACTOR),
CÉDRIC LIBERT (PHOTOGRAPHER).

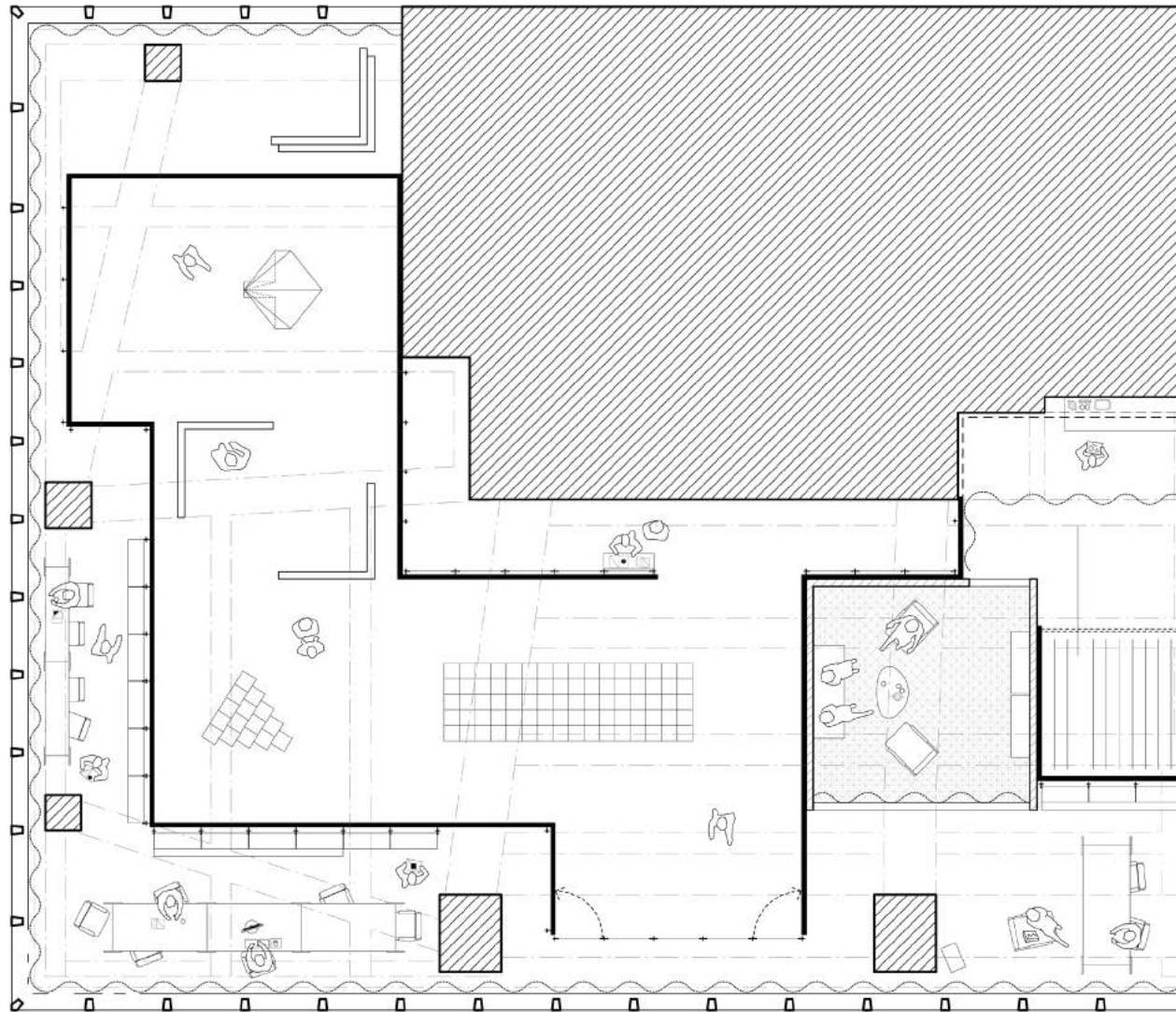


03. EDOUARD MALINGUE GALLERY

HONG KONG 2015

ART GALLERY,
ARCHITECTURE AND ENGINEERING,

BEAU ARCHITECTS (ARCHITECT)
JOSEPH BENEDETTI (STRUCTURAL ENGINEER),
NEW LEAF ENGINEERING COMPANY (CONTRACTOR)
THOMAS SCHELLO (ACOUSTICIAN),
MARGOT ERRANTE (PHOTOGRAPHER).

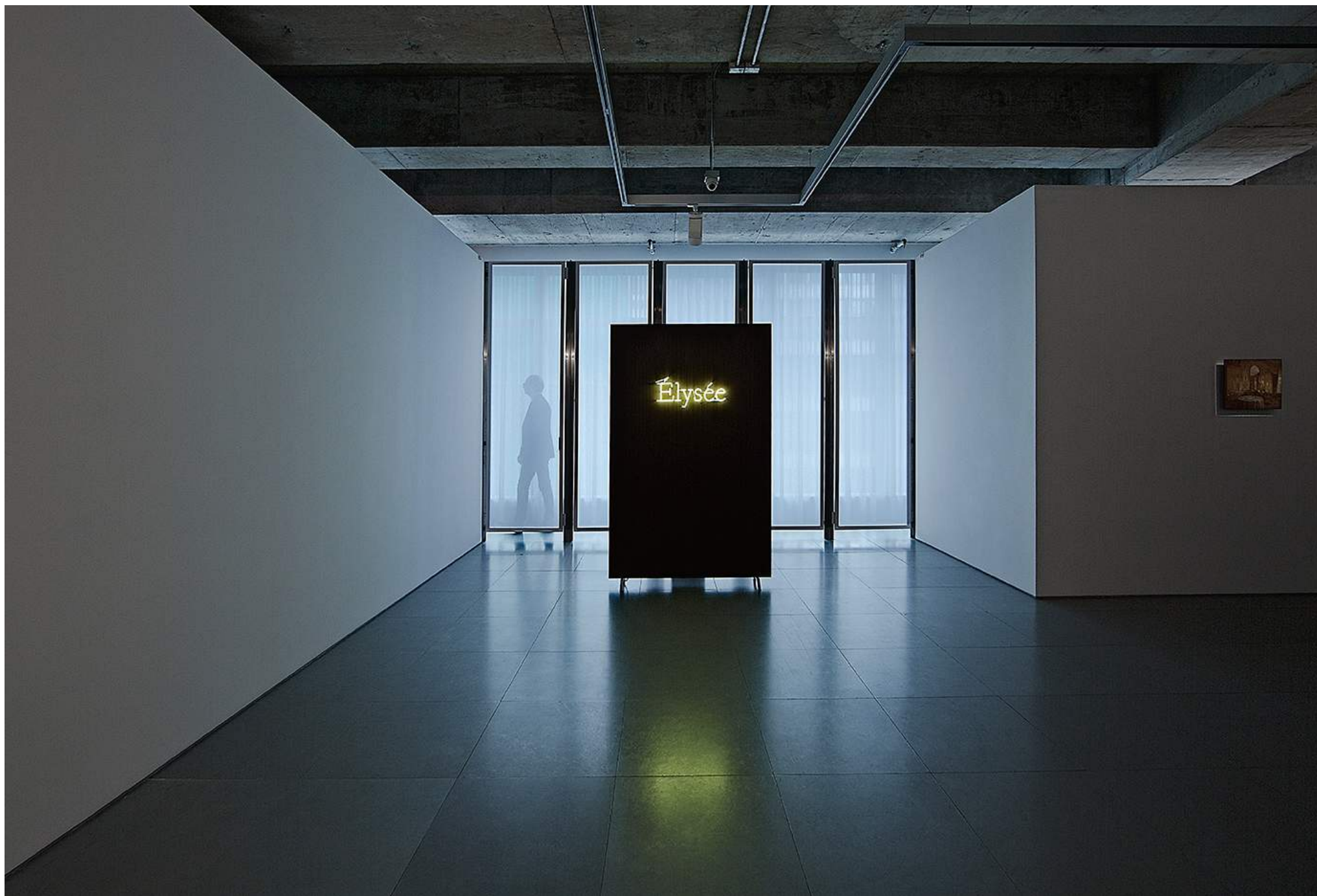




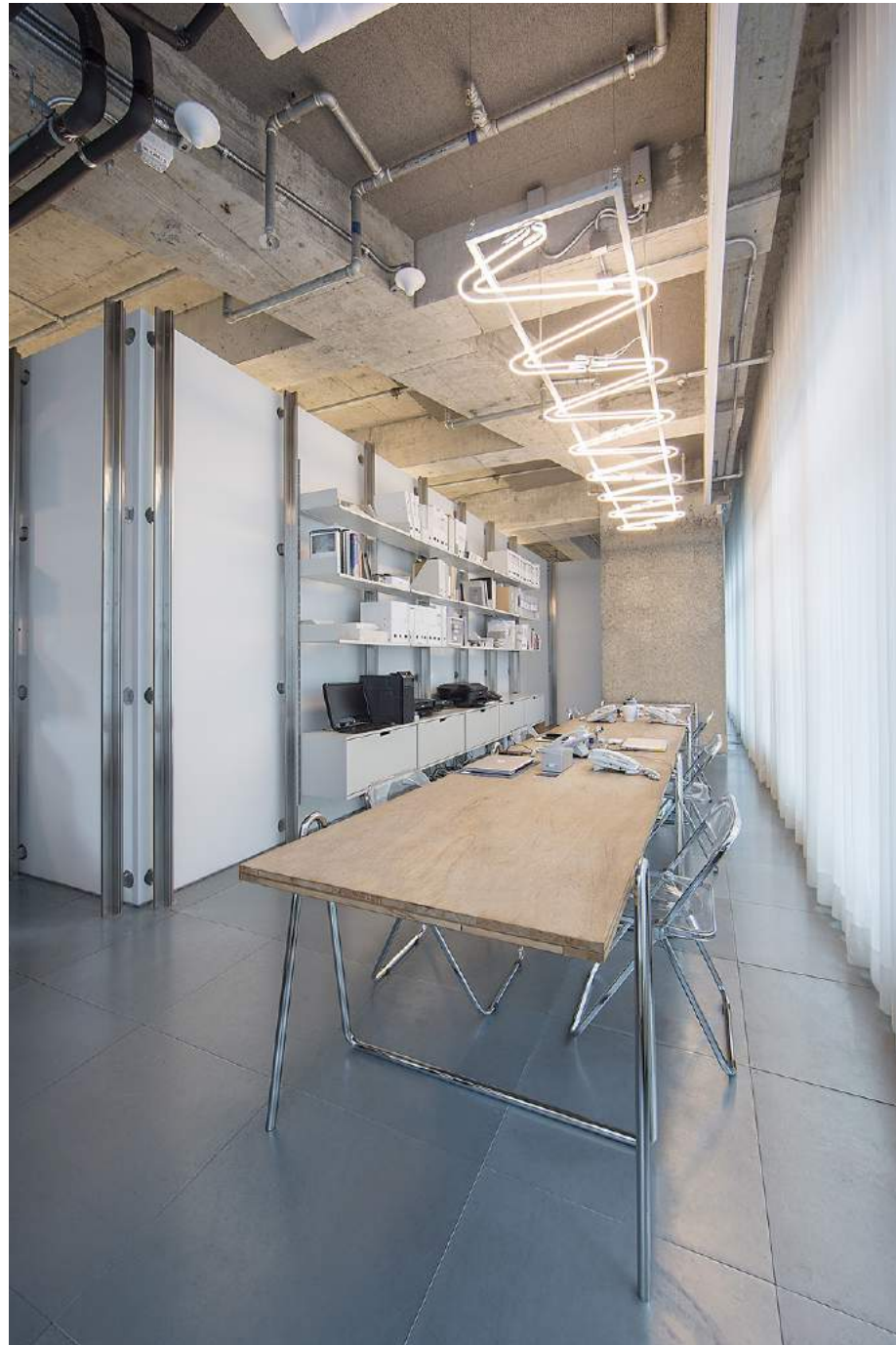












04. MAUSOLEUM

ART BASEL 2015

SCULPTURAL INSTALLATION BY JOAO VASCO PAIVA.

EDOUARD MALINGUE GALLERY (CLIENT),
JOAO VASCO PAIVA (ARTIST),
XUE TAN (EXECUTIVE PRODUCER),
BEAU ARCHITECTS (ARCHITECT CONSULTANT),
JOSEPH BENEDETTI (STRUCTURAL ENGINEER),
NEW LEAF ENGINEERING COMPANY (CONTRACTOR).

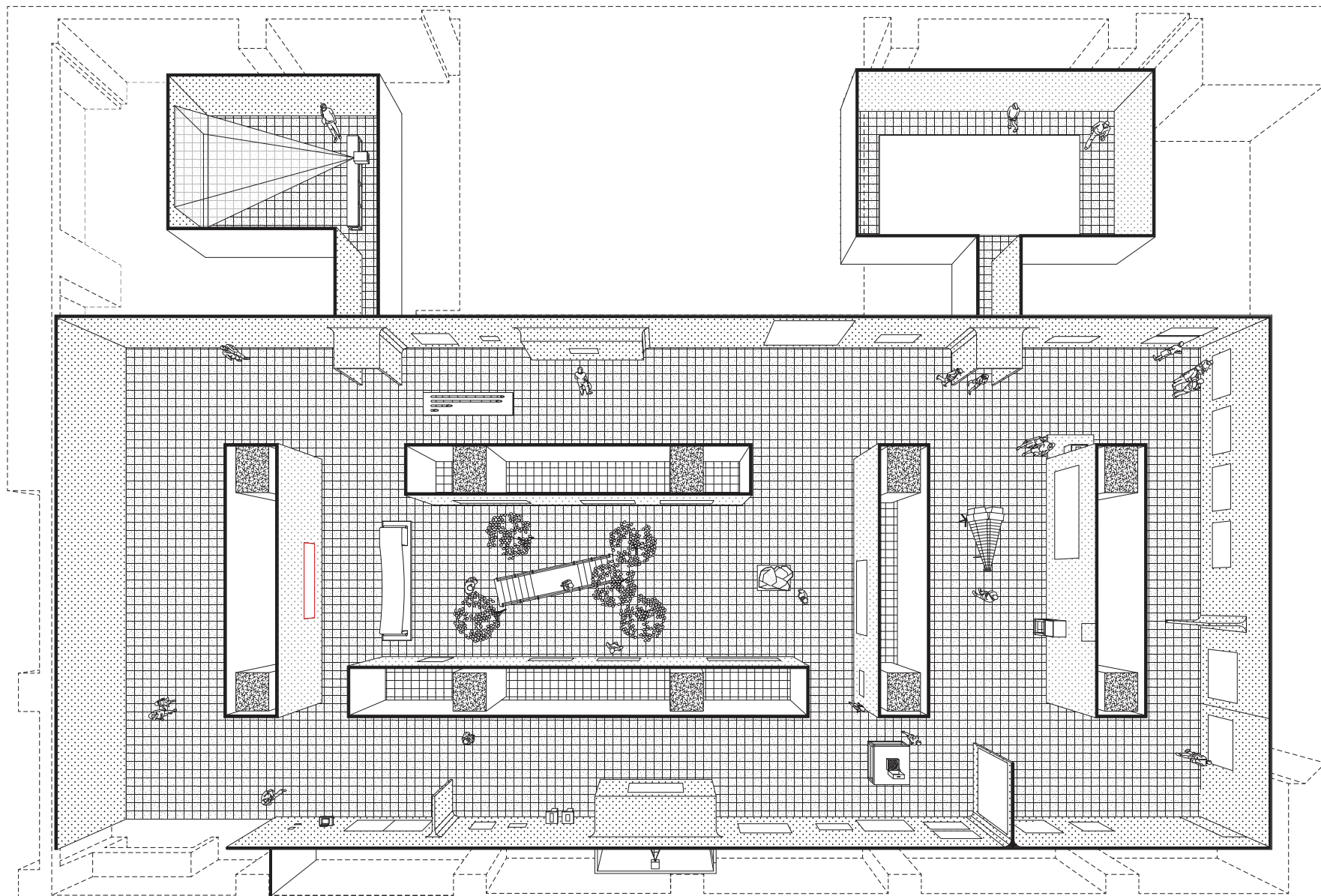


05.M+ SIGG COLLECTION FOUR DECADES OF CHINESE CONTEMPORARY ART

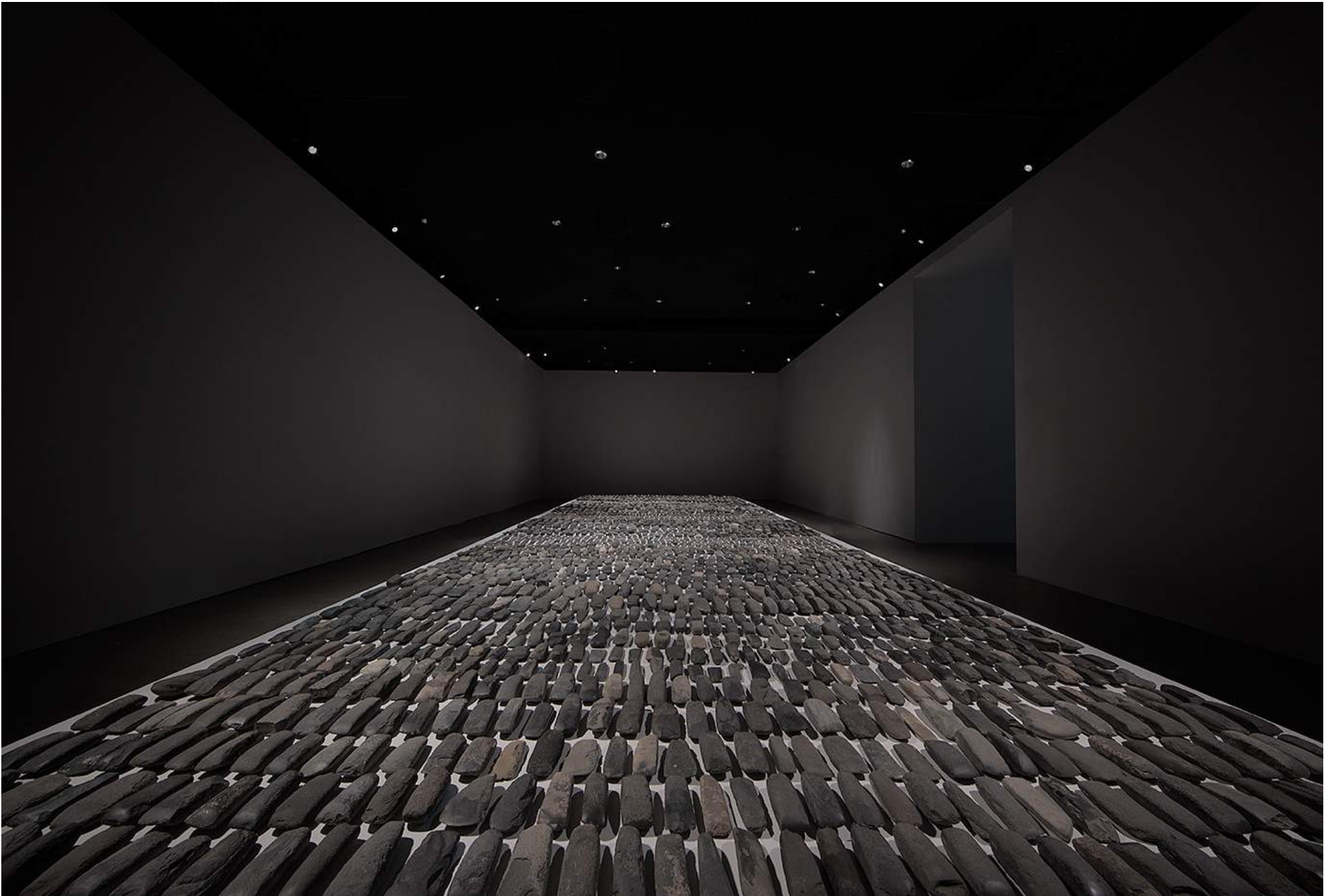
HONG KONG 2016

EXHIBITION, ARCHITECTURE.

M+ MUSEUM (CLIENT),
PI LI (CURATOR),
UNIPLAN (CONTRACTOR)
MARGOT ERRANTE (PHOTOGRAPHER).









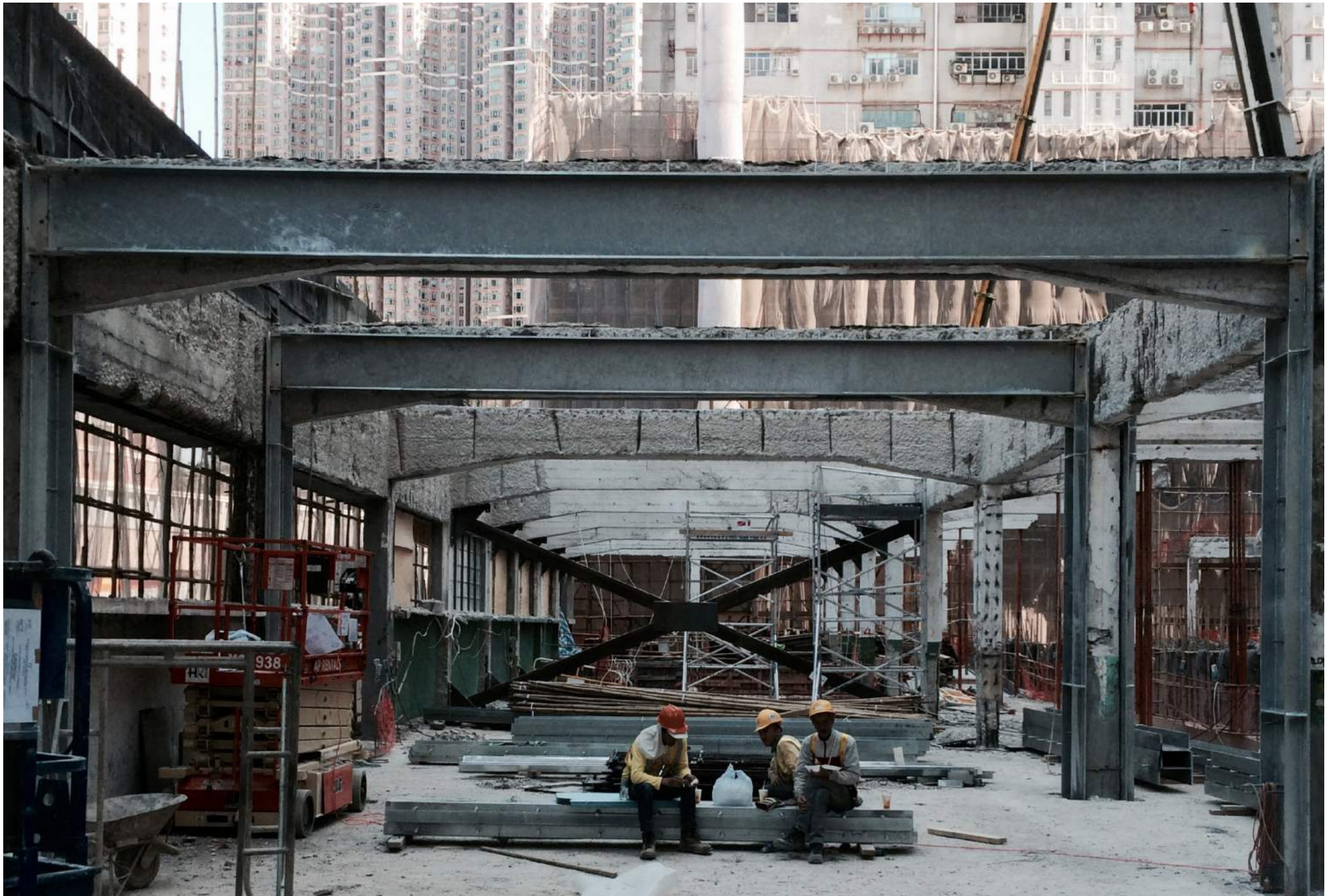


06.CENTRE FOR HERITAGE, ART & TEXTILE (CHAT)

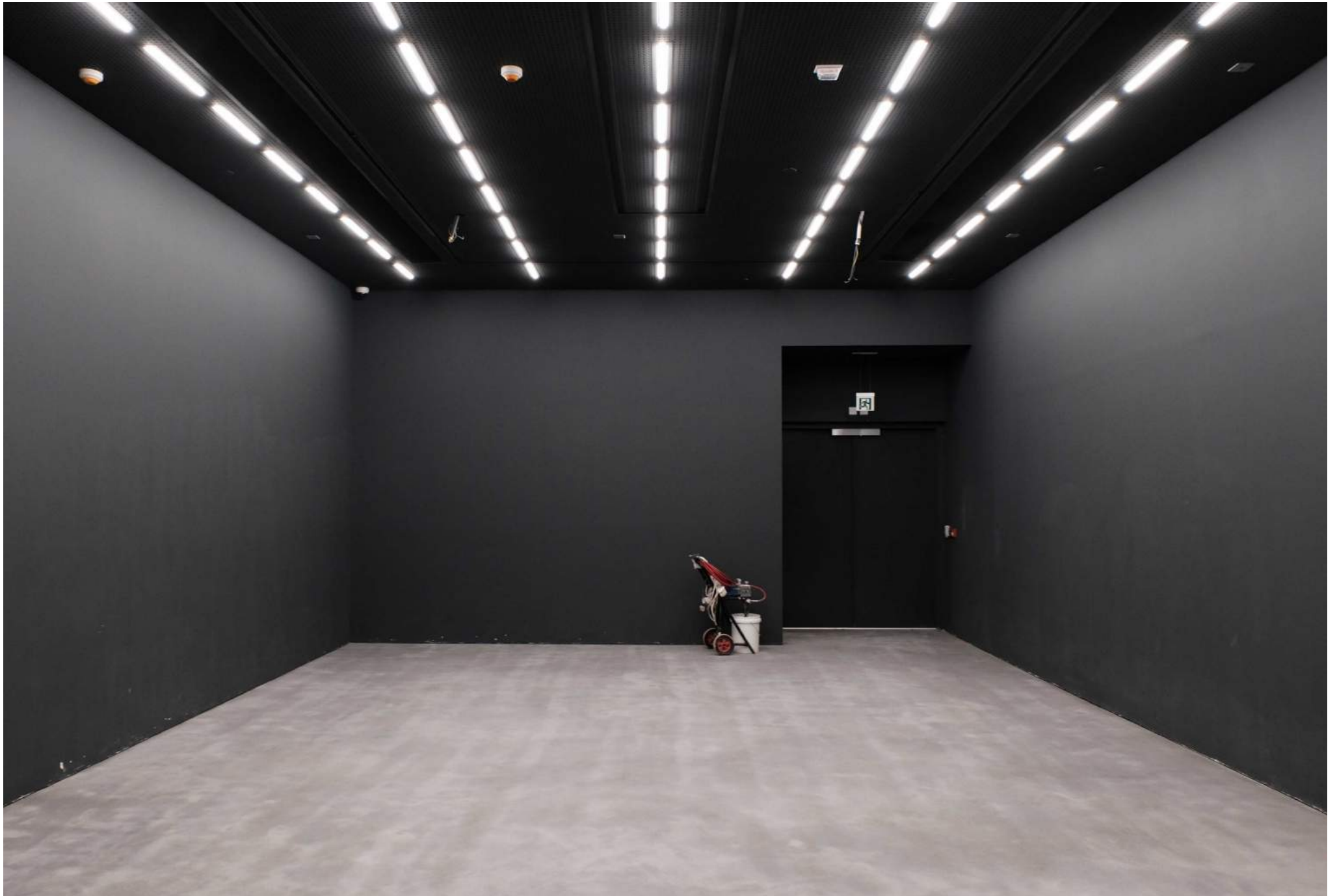
HONG KONG 2015-2018

ART CENTRE, ARCHITECTURE

NAN FUNG GROUP (CLIENT),
CHAT (USER),
NAN FUNG DEVELOPMENT (DESIGN ARCHITECT),
TCA (ARCHITECT),
BEAU ARCHITECTS (ART GALLERY ARCHITECT),
AECOM (STRUCTURAL ENGINEER),
AURECON (BUILDING SERVICES ENGINEER),
WSP (AV/ICT ENGINEER),
PAUL Y.BUILDERS (MAIN CONTRACTOR)
SONIC (GALLERY CONTRACTOR)









07.WONG CHUK STREET

HONG KONG 2016-2018

OFFICE, ARCHITECTURE





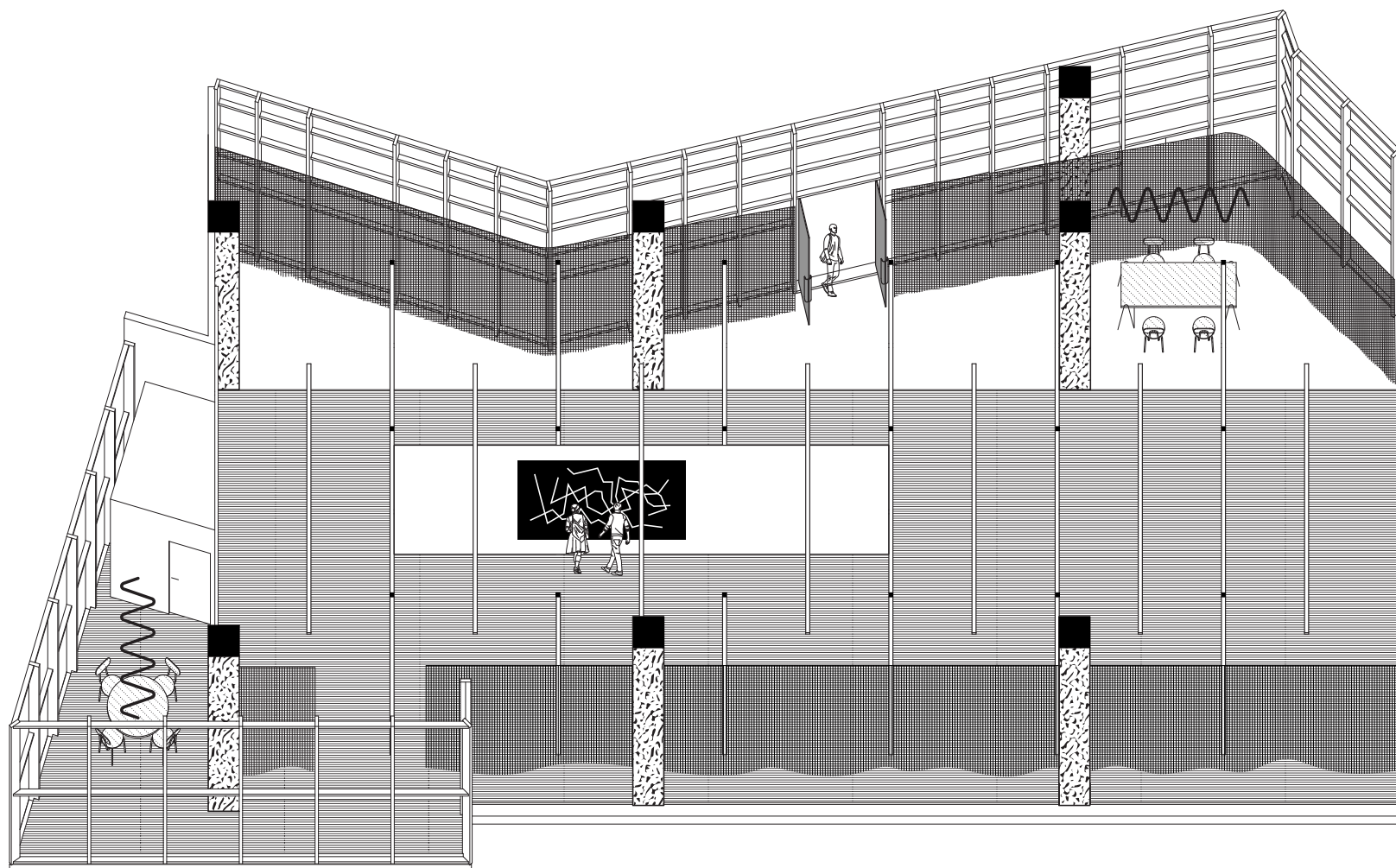


08. EDOUARD MALINGUE GALLERY

SHANGHAI 2016

ART GALLERY,
ARCHITECTURE AND ENGINEERING,

EDOUARD MALINGUE GALLERY (CLIENT),
BEAU ARCHITECTS (ARCHITECT),
RUNWANG (MAIN CONTRACTOR),
SHOWTEX (CURTAIN CONTRACTOR).









09.ZAHA HADID: THERE SHOULD BE NO END TO EXPERIMENTATION

HONG KONG 2017

EXHIBITION, PRODUCTION.

SERPENTINE GALLERIES (CLIENT)
AMIRA GAD, HANS ULRICH OBRIST, WOODY YAO (CURATORS),
ZAHA HADID DESIGN (EXHIBITION DESIGNER),
BEAU ARCHITECTS (EXHIBITION PRODUCER),
ACTECHNIK (AP),
UNIPLAN (CONTRACTOR),
LIGHTLINKS (LIGHTING CONSULTANT)



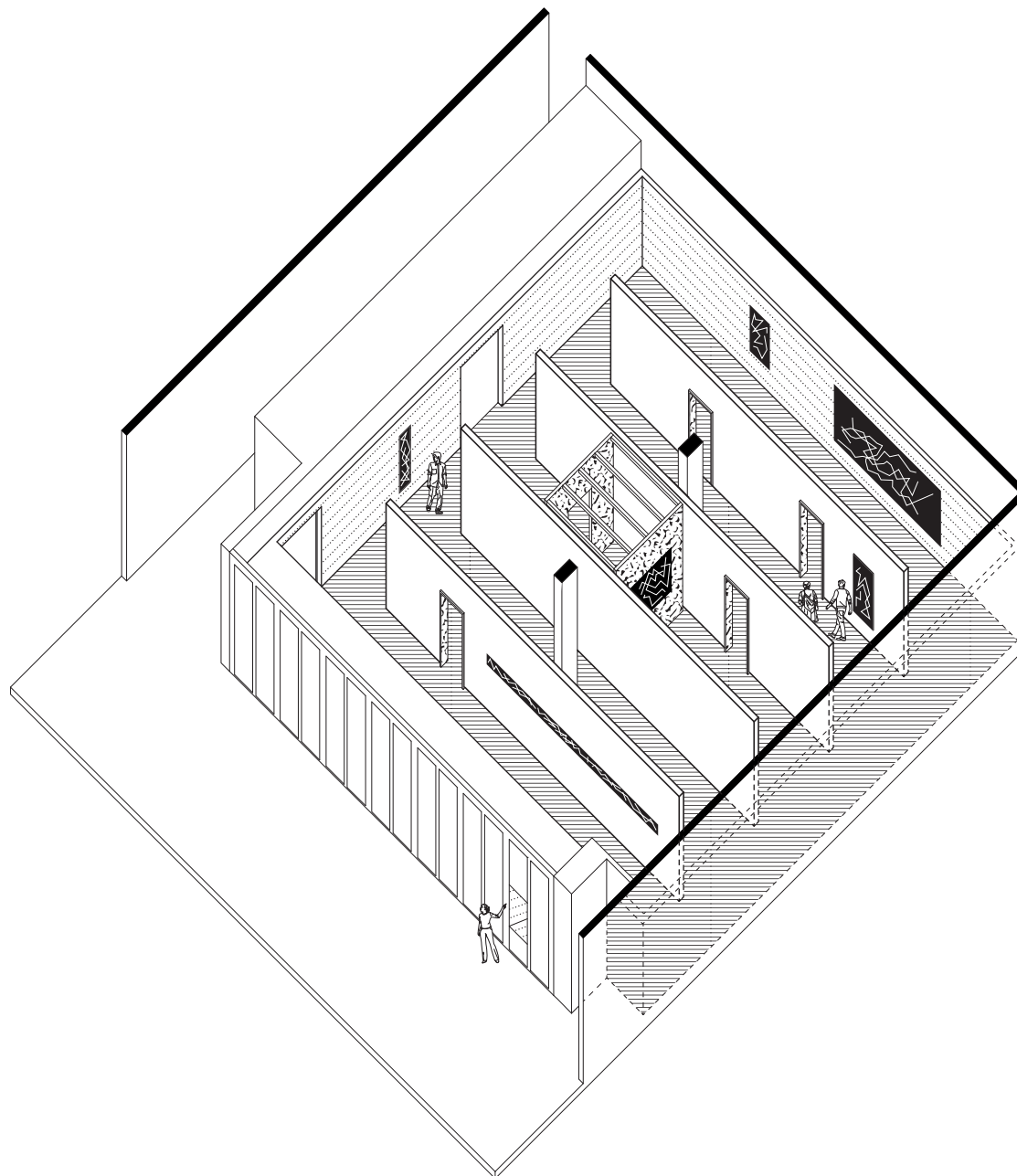


10. THE WEIGHT OF LIGHTNESS

HONG KONG 2017

EXHIBITION, ARCHITECTURE

M+ MUSEUM (CLIENT),
LESLEY MA (CURATOR),
BEAU ARCHITECTS (ARCHITECT),
PROJECT PROJECT (GRAPHIC DESIGN),
SPECTRUM (LIGHTING CONSULTANT),
ROCZ (CONTRACTOR).





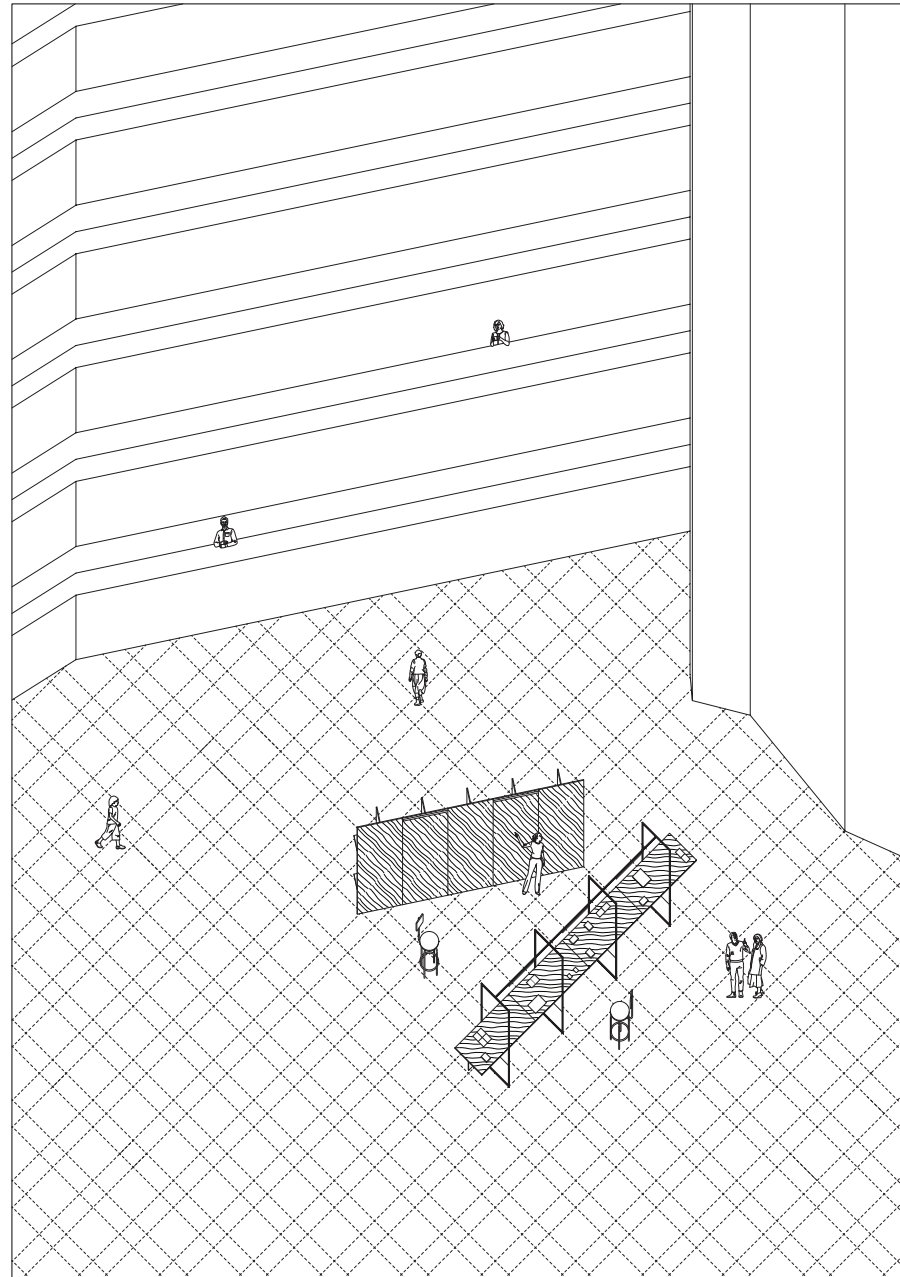


11.TAI KWUN TABLE II

HONG KONG 2017

EXHIBITION, TABLE DESIGN

THE JOCKEY CLUB CPS (CLIENT),
TAI KWUN CONTEMPORARY (CURATOR),
BEAU ARCHITECTS (TABLE DESIGN),
HATO (GRAPHIC DESIGN),
UNIPLAN (CONTRACTOR).





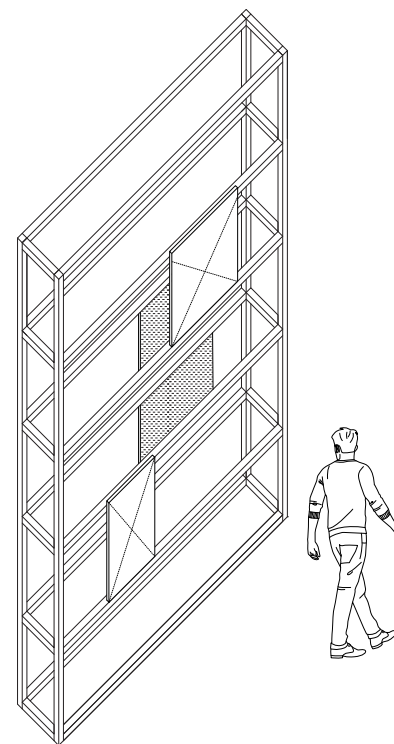
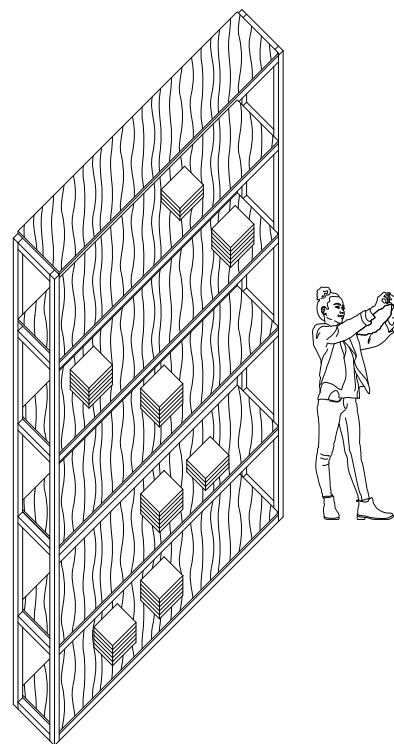
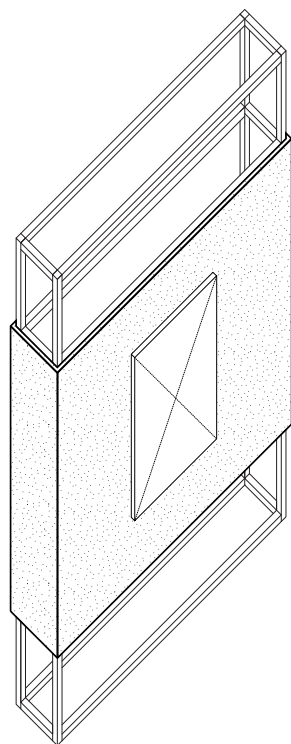
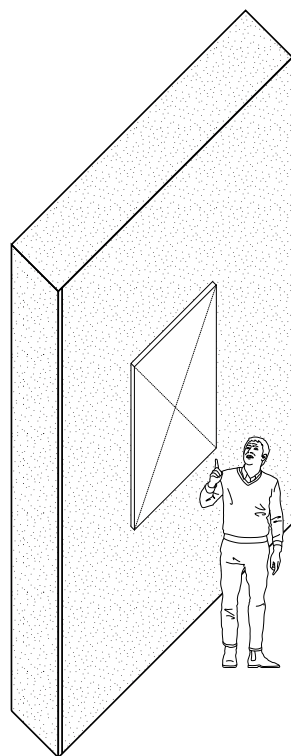


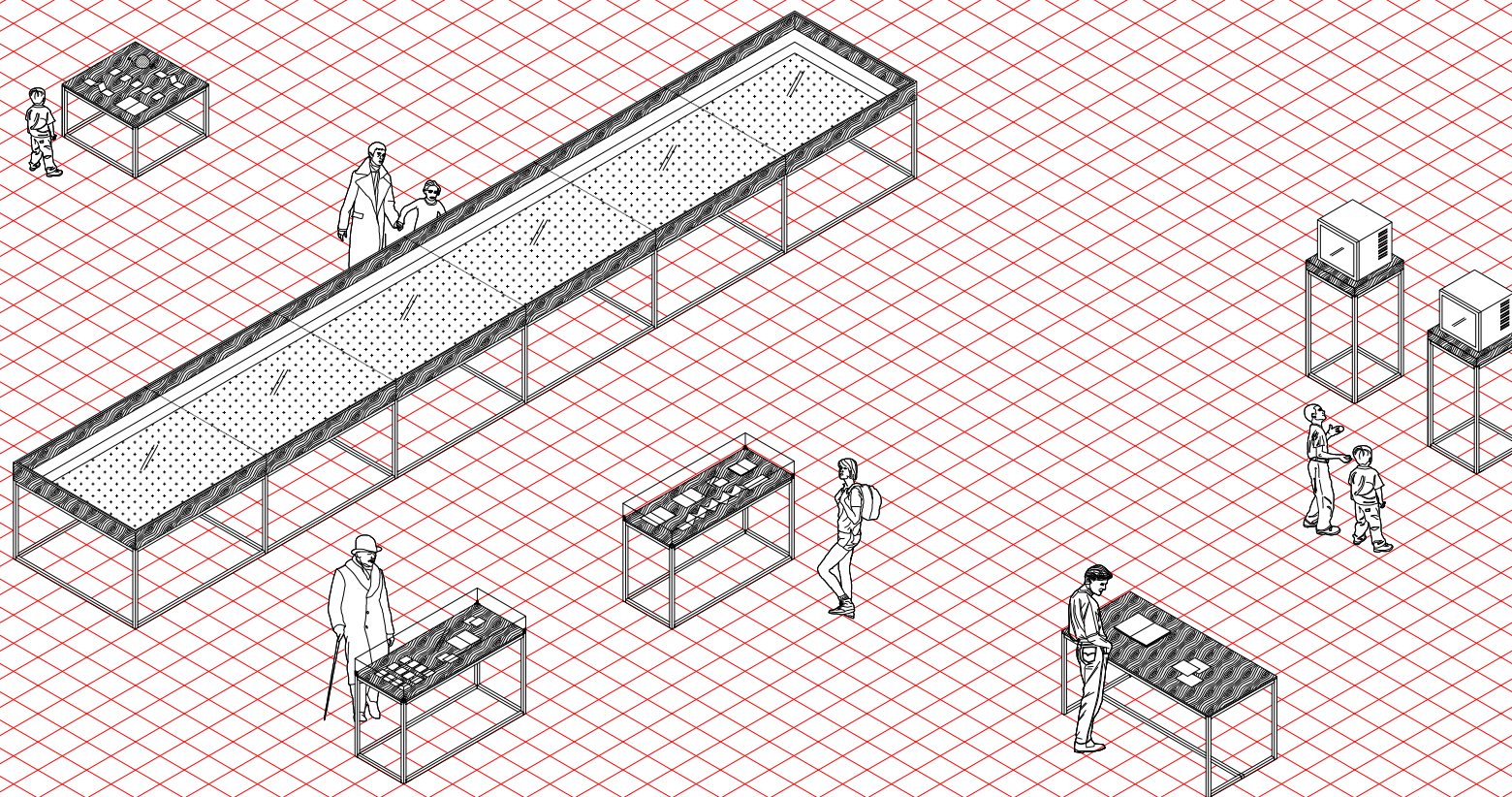
12.TAI KWUN EXHIBITION DISPLAY

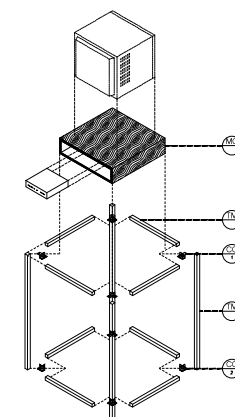
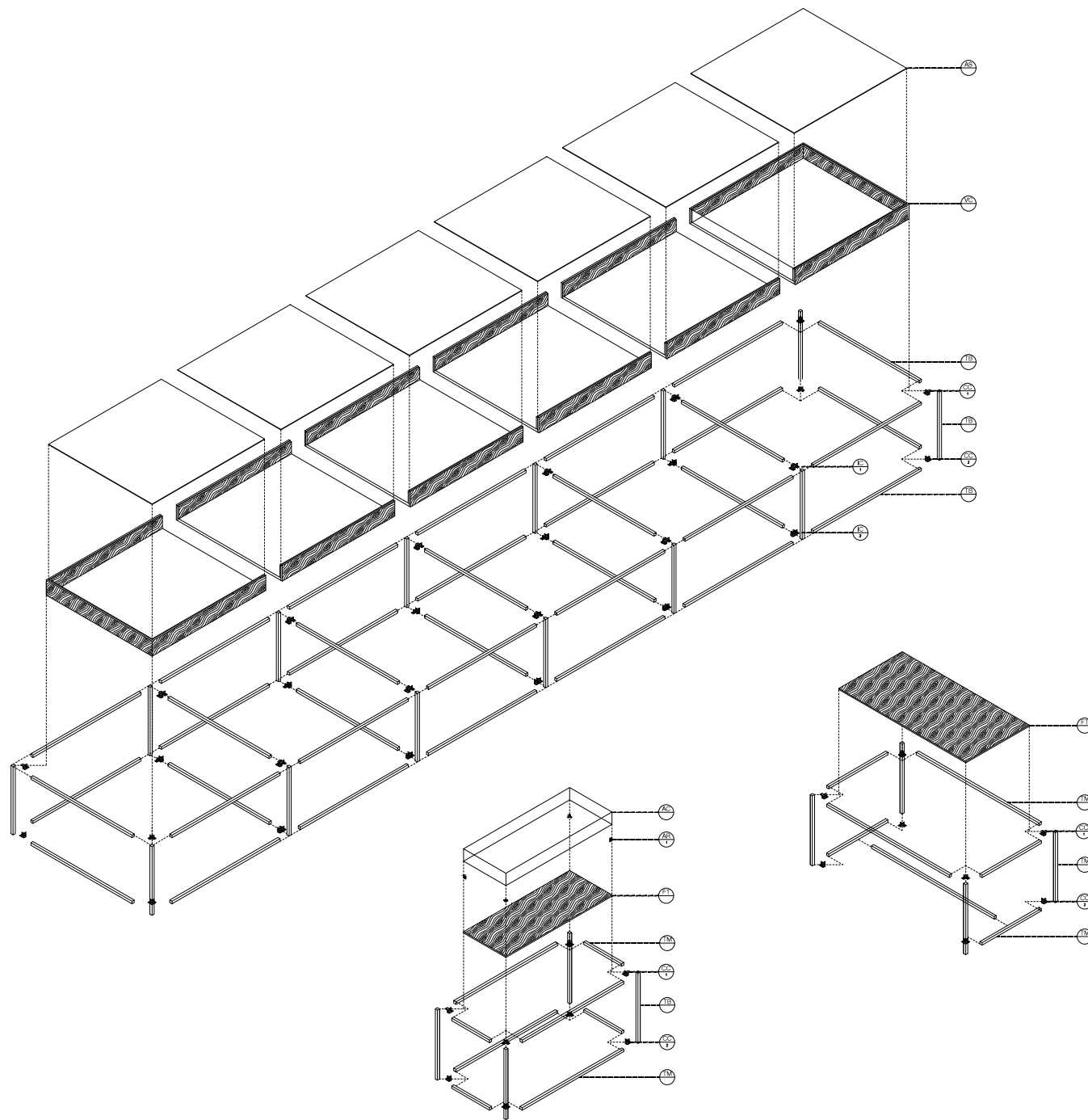
HONG KONG 2017

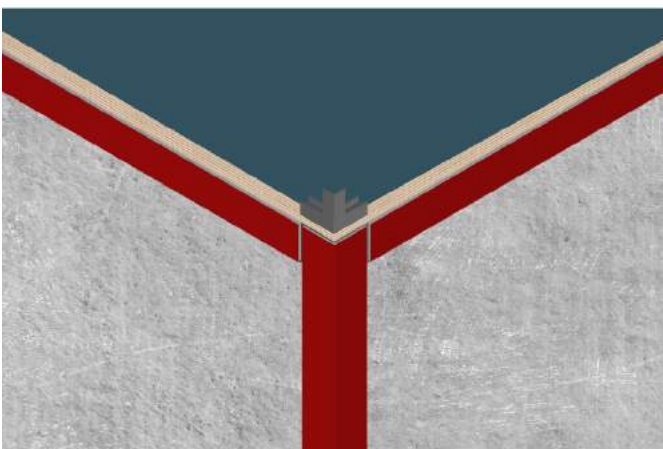
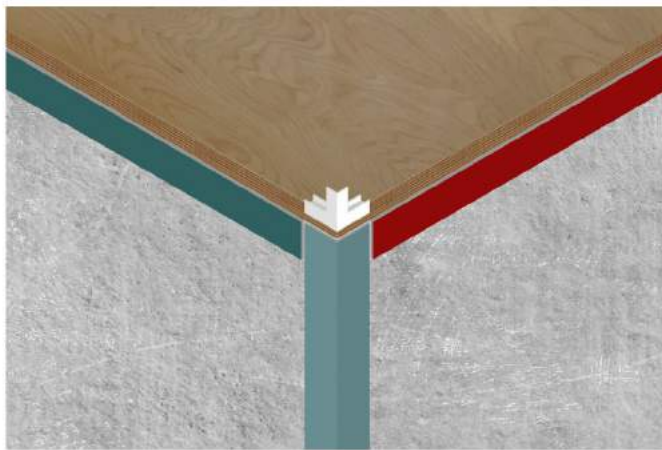
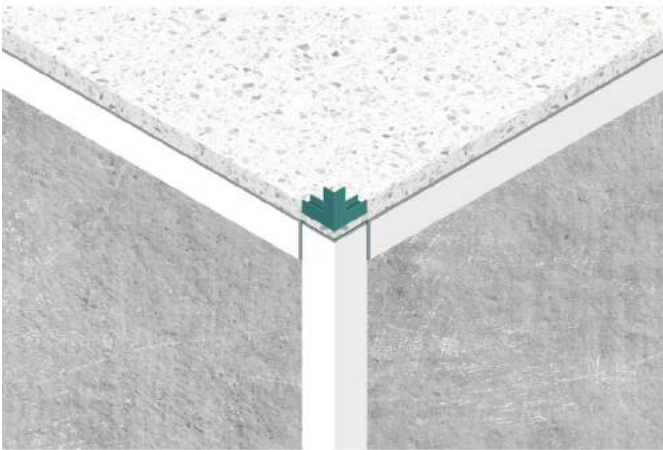
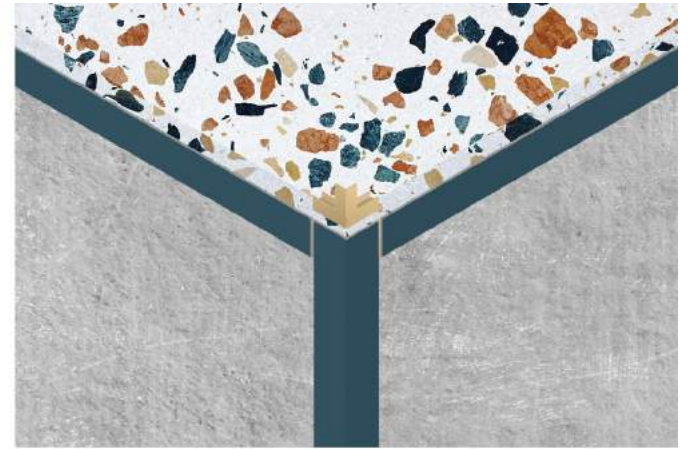
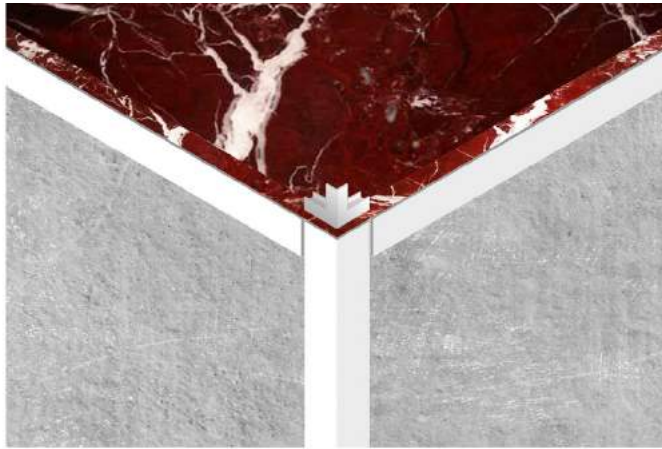
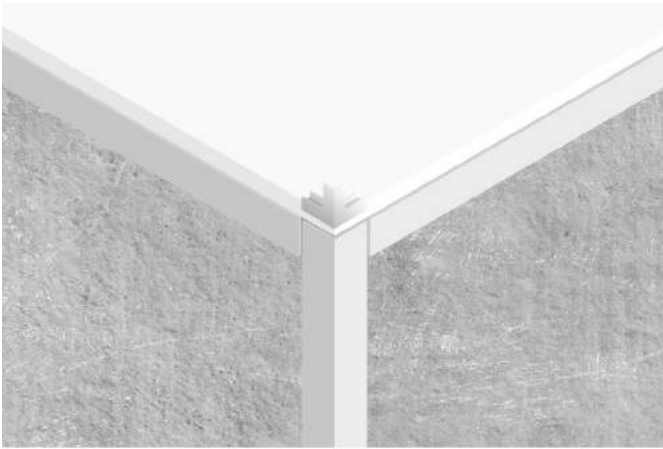
EXHIBITION, ARCHITECTURE.

THE JOCKEY CLUB CPS (CLIENT),
TAI KWUN CONTEMPORARY (CURATOR),
BEAU ARCHITECTS (ARCHITECT),
HATO (GRAPHIC DESIGN).





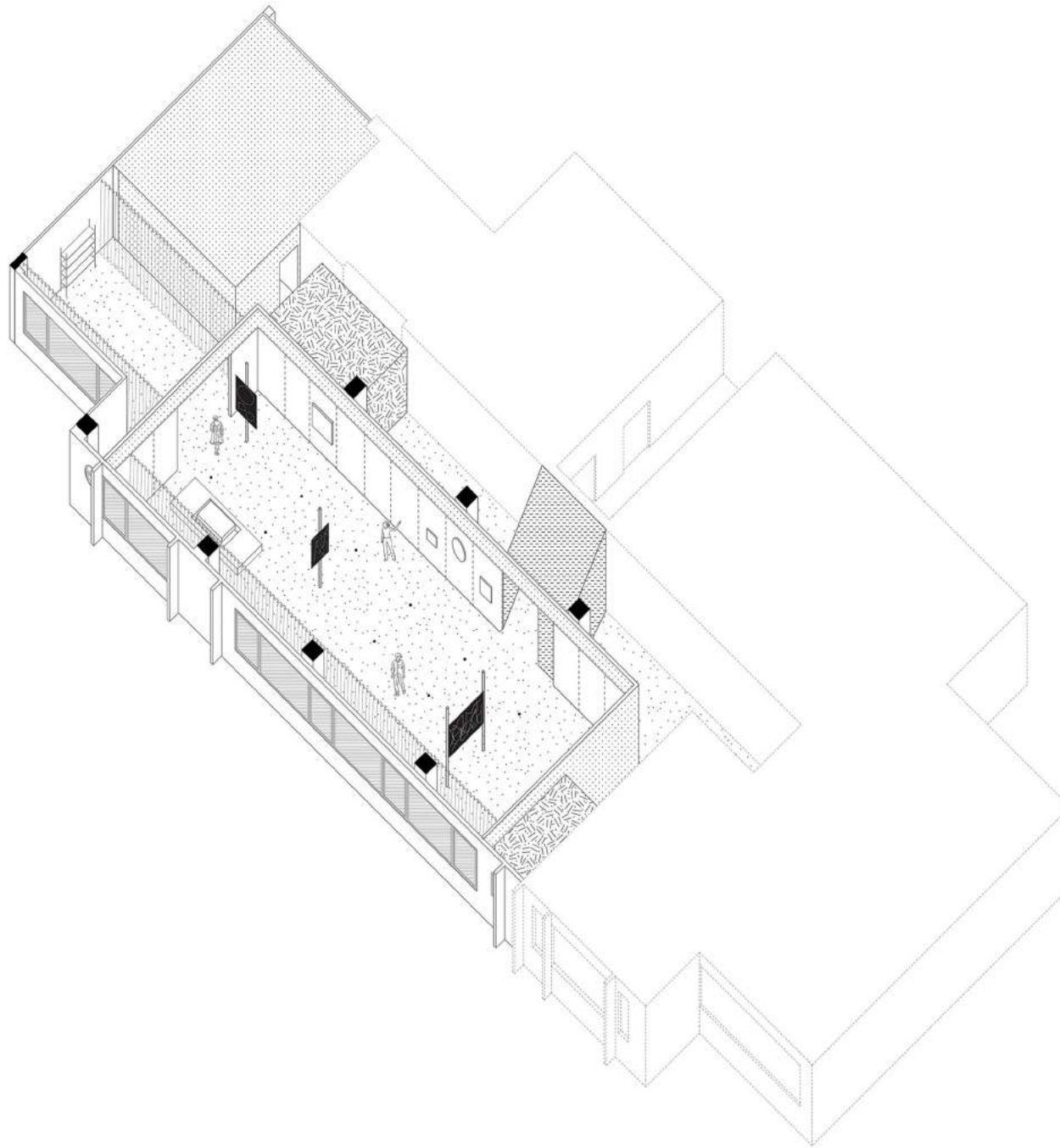




13. CHAI WAN ARTIST STUDIO

HONG KONG 2017

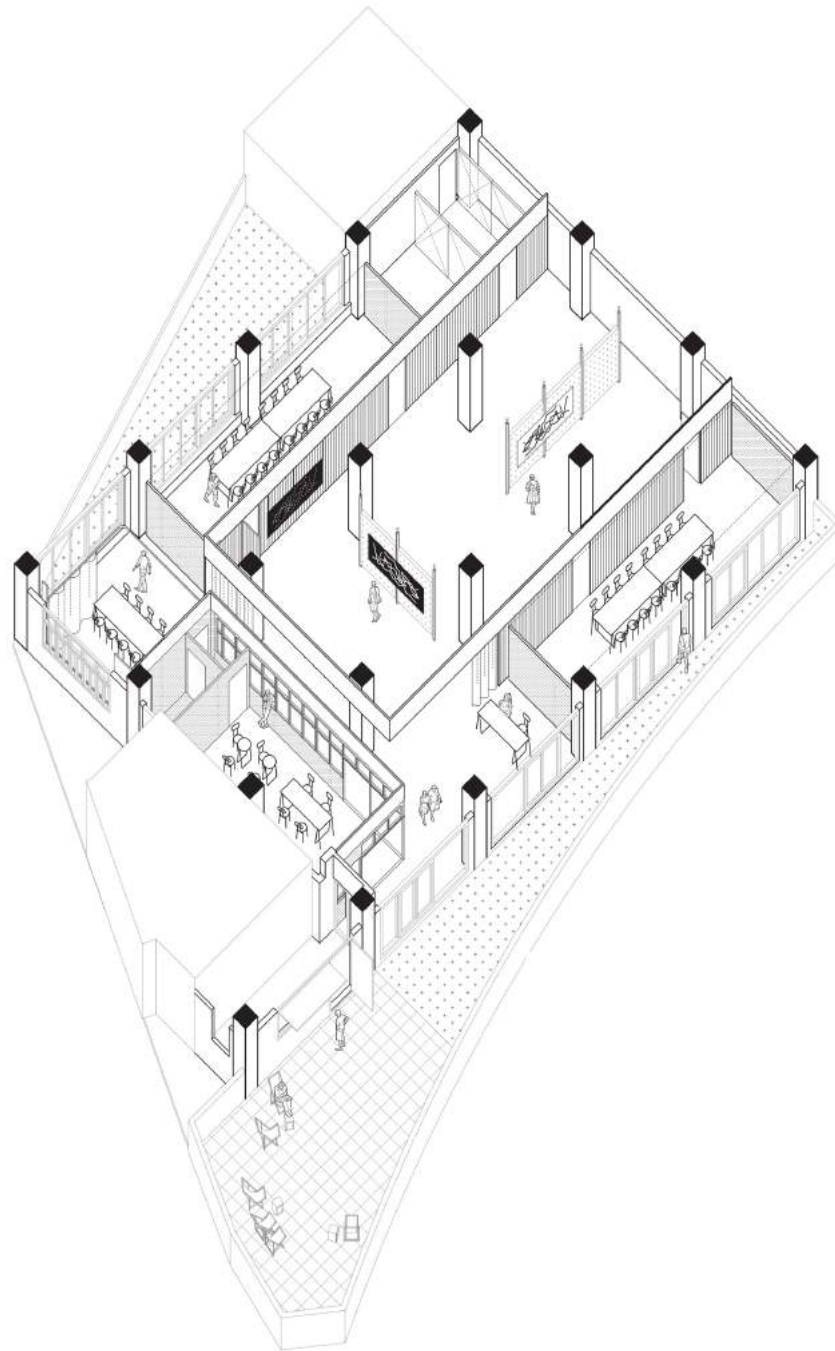
ART SPACE, ARCHITECTURE.



14.ART HAUS

HONG KONG 2017

ART SPACE, ARCHITECTURE.











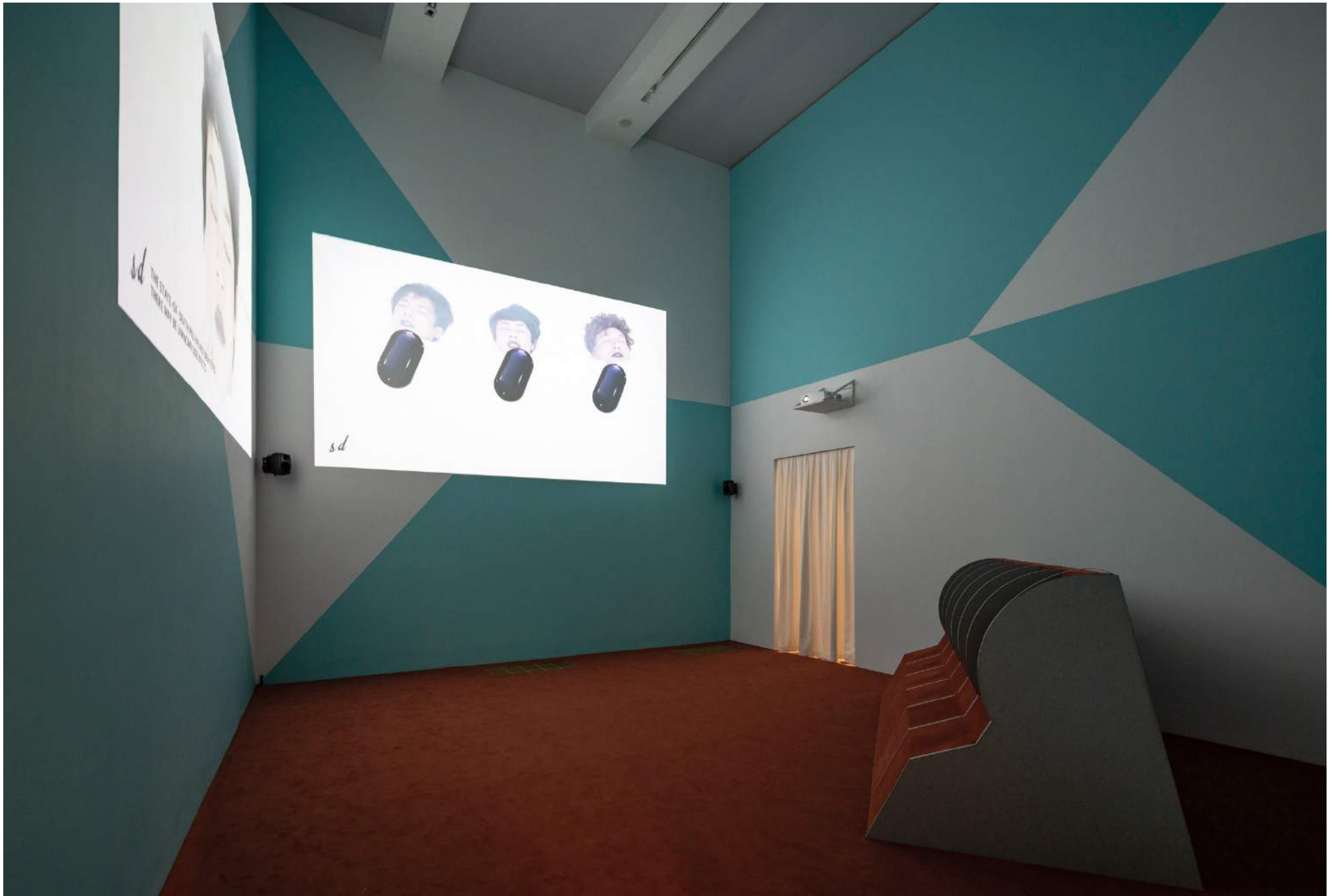
15. DISMANTLING THE SCAFFOLD

HONG KONG 2018

EXHIBITION, ARCHITECTURE.

TAI KWUN CONTEMPORARY (CLIENT),
SPRING WORKSHOP (CO-ORGANIZER),
CHRISTINA LI (CURATOR),
UNIPLAN (CONTRACTOR),
XU LIANG LEON (PHOTOGRAPHER).





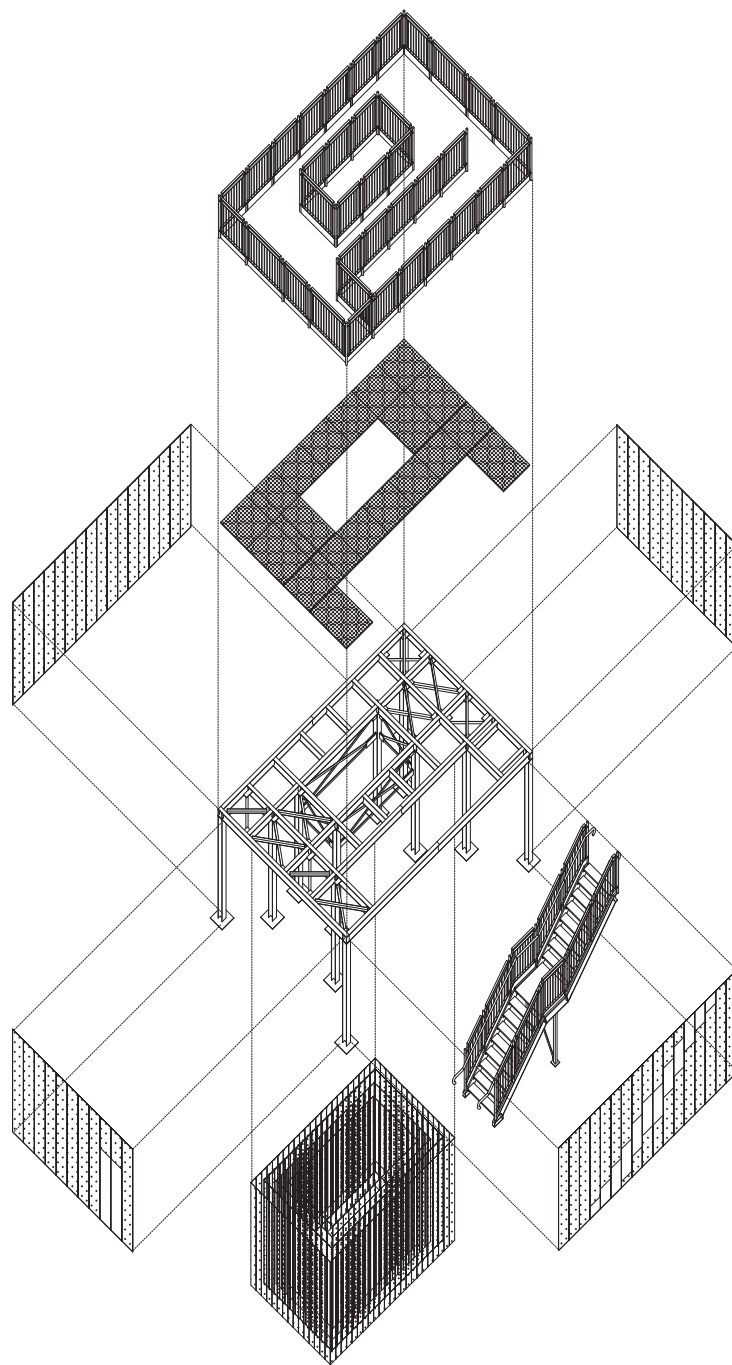


16. NUCLEUS

HONG KONG 2018

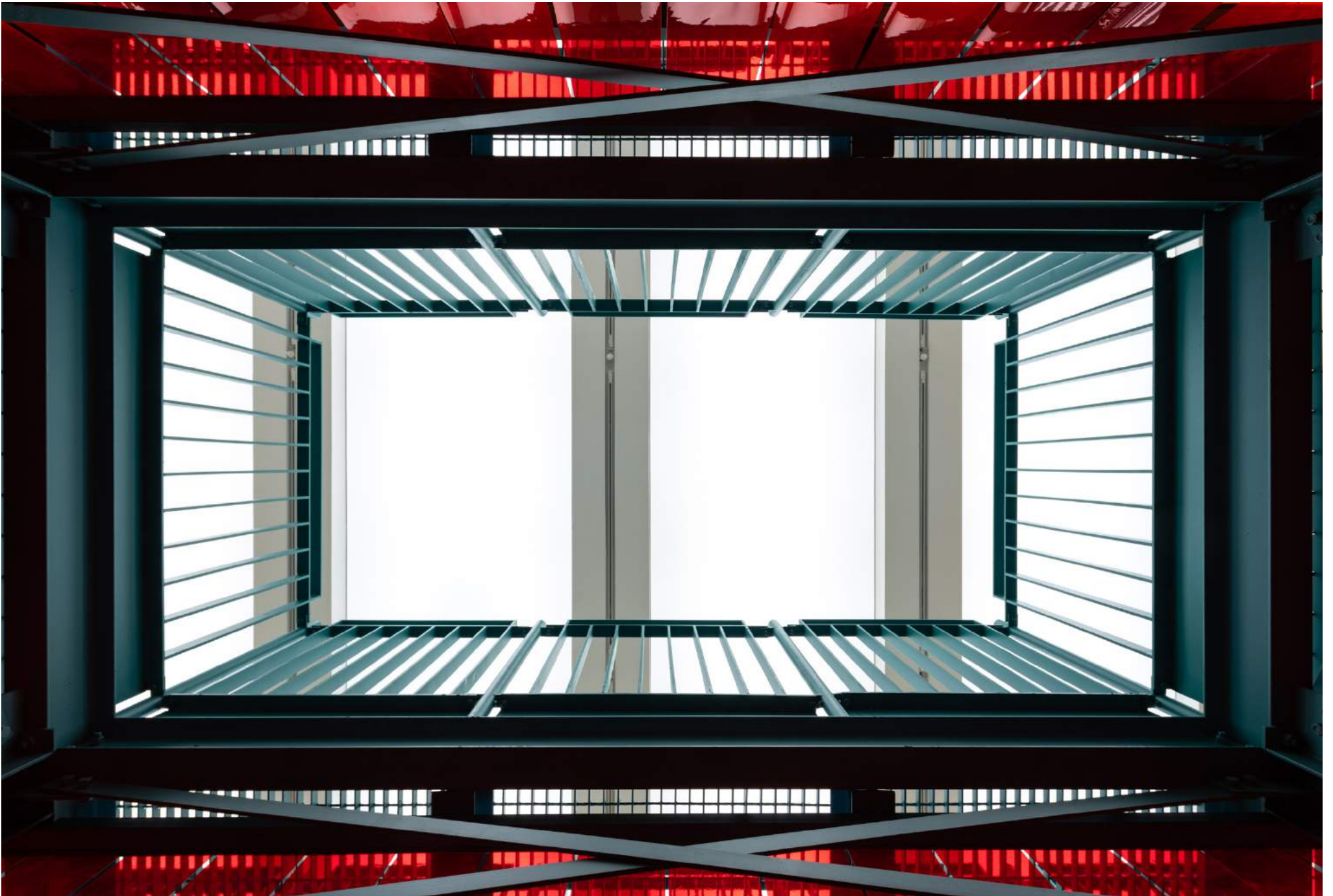
SCULPTURAL INSTALLATION BY GABRIEL LESTER.

GABRIEL LESTER/POLYLESTER (ARTIST),
TAI KWUN CONTEMPORARY (GALLERIST),
BEAU ARCHITECTS (ARCHITECT),
BURO HAPPOLD (STRUCTURAL ENGINEER).





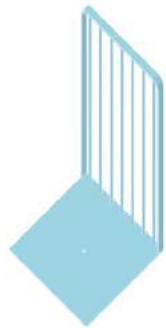




17.PLAYGROUND

HONG KONG 2018

NADIM ABBAS (ARTIST),
TAI KWUN CONTEMPORARY (GALLERIST),
BEAU ARCHITECTS (ARCHITECT),
ARUP (STRUCTURAL ENGINEER).



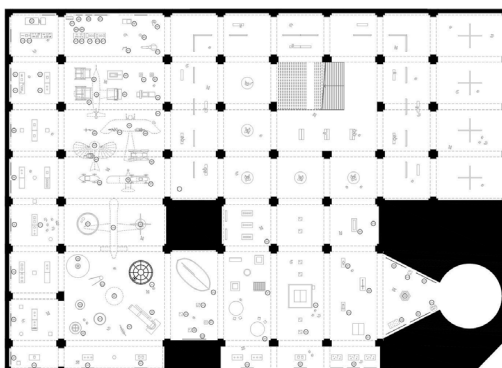
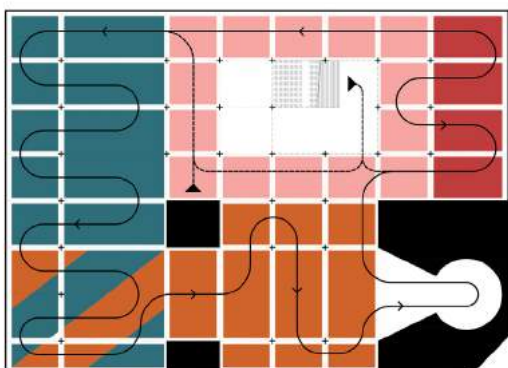
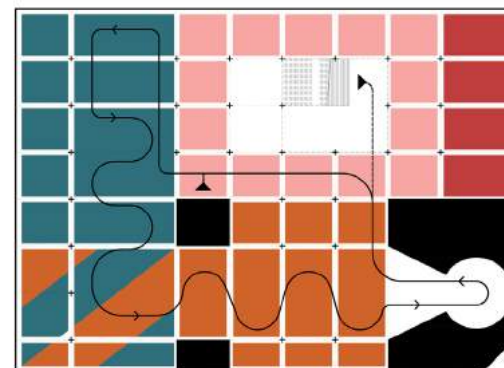
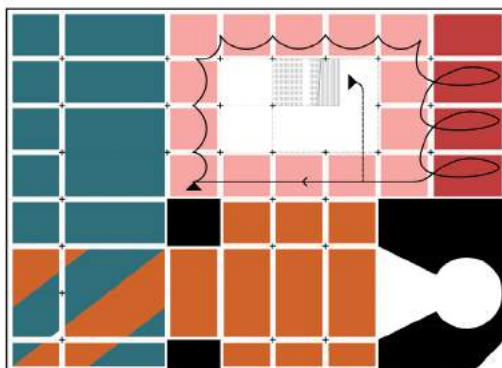
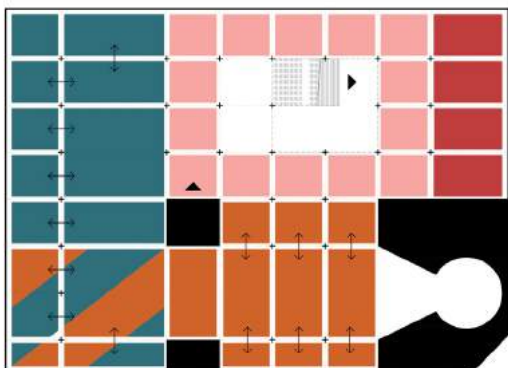
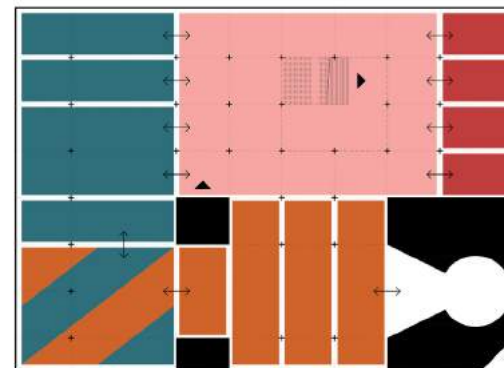
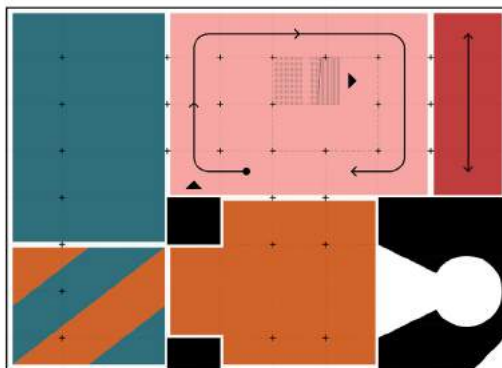
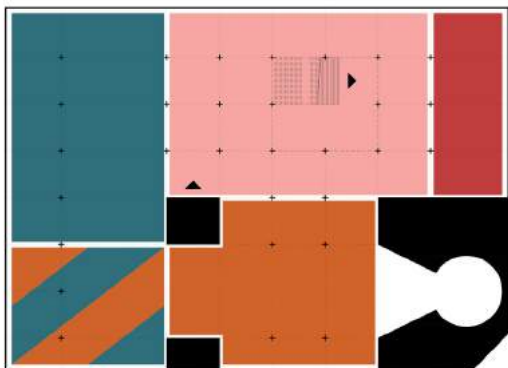




18. TSINGHUA UNIVERISTY SCIENCE MUSEUM

BEIJING 2018

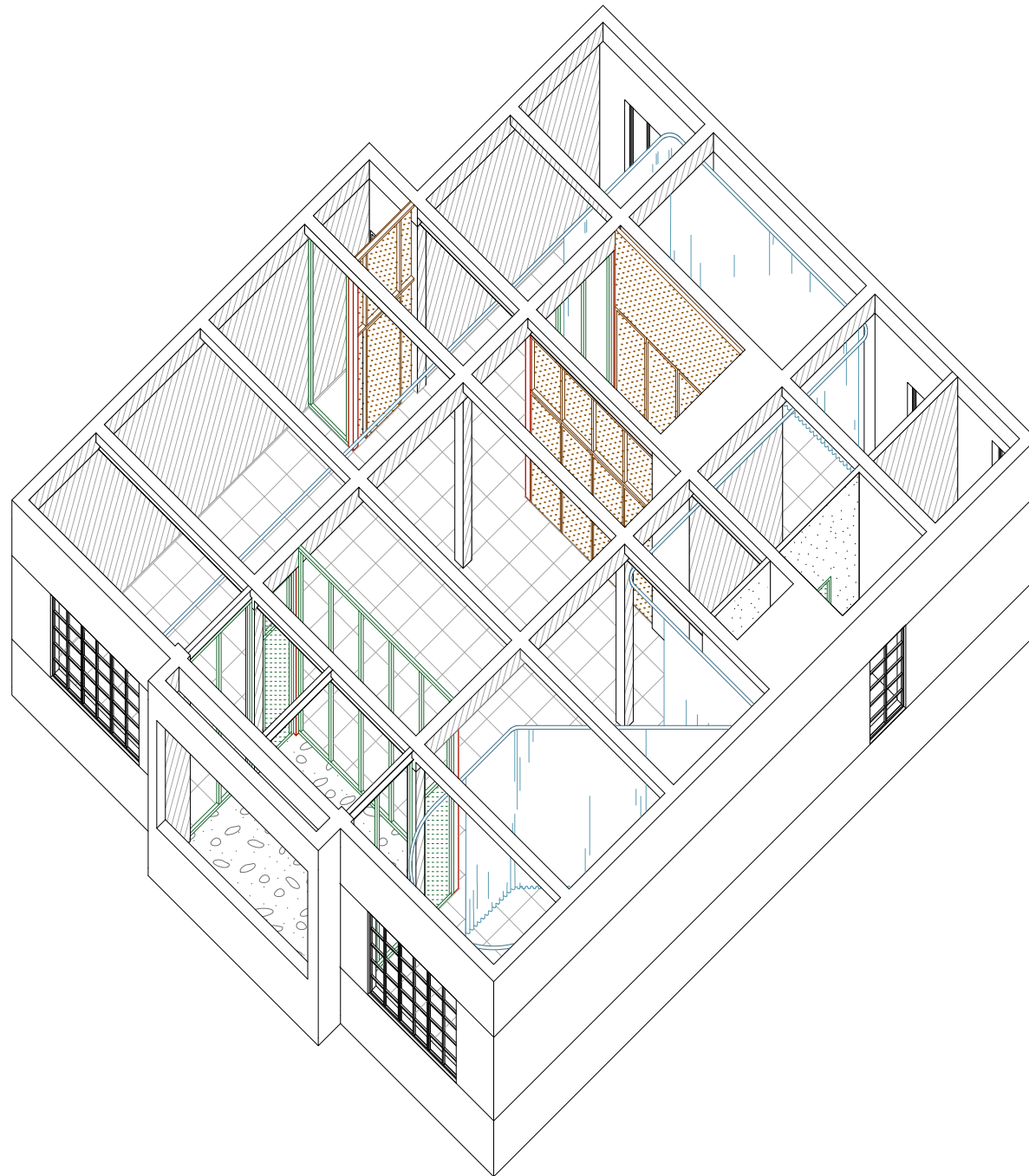
COMPETITION WITH HENNING & LARSEN.
CONSULTANT IN MUSEOGRAPHY AND SCENOGRAPHY.



19.TONGREN ROAD

SHANGHAI 2018

ARCHITECTURE, HYBRID SPACE (DOMESTIC + ART-SPACE).





20. A HOLLOW IN A WORLD TOO FULL, CAO FEI SOLO SHOW

HONG KONG 2018

EXHIBITION, ARCHITECTURE.

TAI KWUN CONTEMPORARY (CLIENT),
PHILIP TINARI & XUE TAN (CURATOR),
EXCEL (CONTRACTOR)
XU LIANG LEON (PHOTOGRAPHER).

